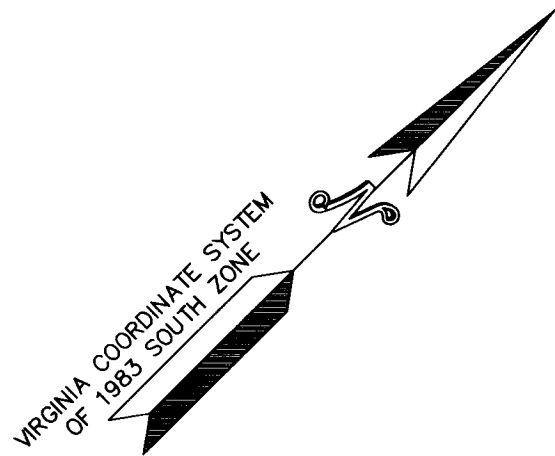


LEGEND:

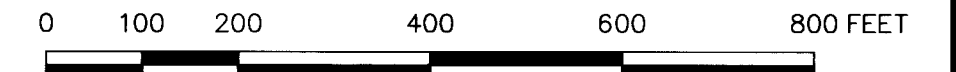
- DENOTES PIN SET
- DENOTES PIN, PIPE, OR MONUMENT FOUND
- (N37°33'59"W)
(692.21') --- DENOTES PROPERTY LINE HEREBY VOIDED.
- RMA** DENOTES RESOURCE MANAGEMENT AREA
- DENOTES ARMY CORPS OF ENGINEERS JURISDICTIONAL WETLANDS



**PROPERTY LINE VACATION OF
THE PROPERTIES OF
YORK PROPERTIES, L.L.C.**

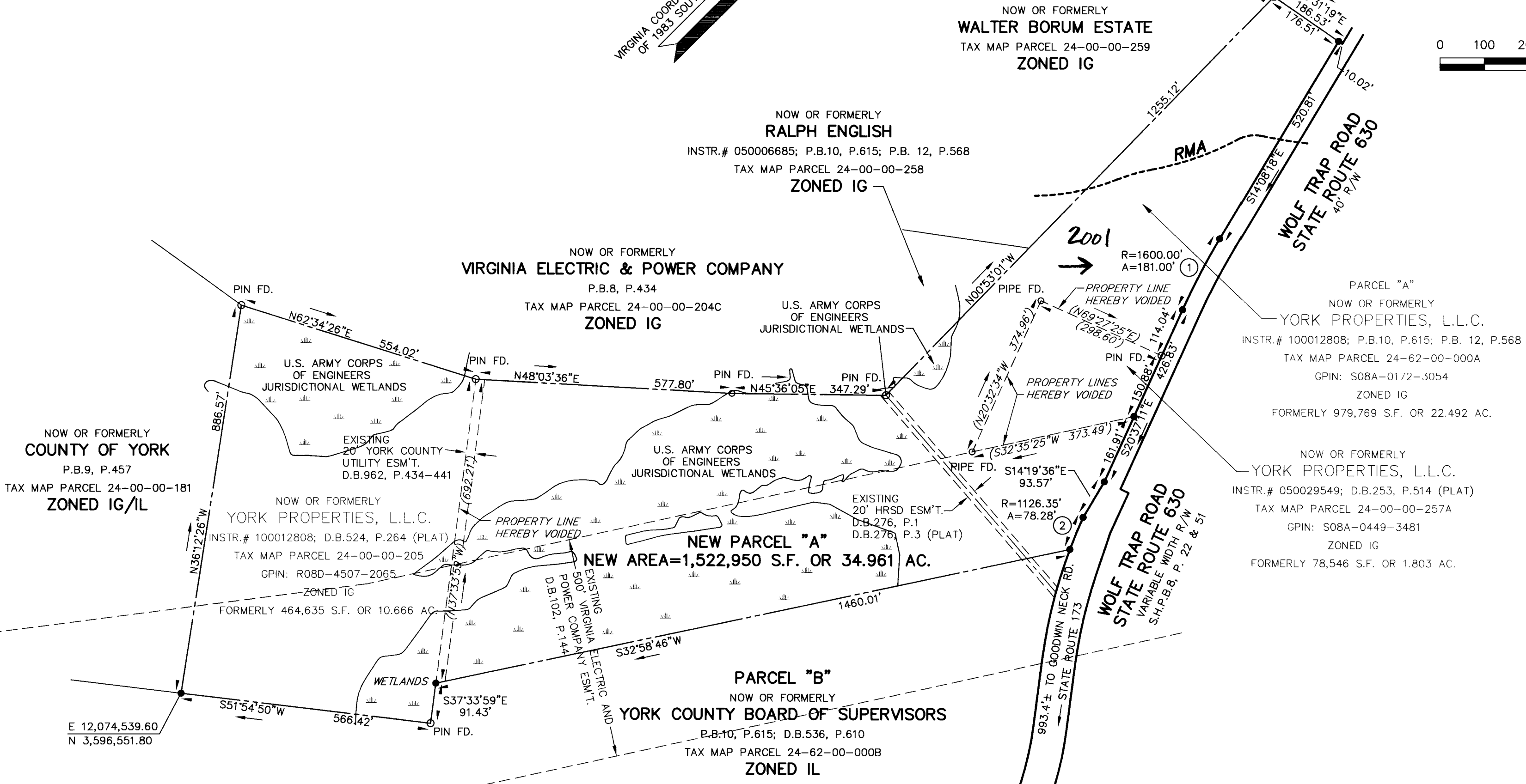
NELSON DISTRICT - COUNTY OF YORK, VIRGINIA
JULY 12, 2010

C.E. Newbaker
SURVEYING & PLANNING, INC.
P.O. BOX 1298
YORKTOWN, VA. 23692
PH#: 757-240-2562
FAX: 757-926-4880



SCALE: 1" = 200'

SHEET 2 OF 2



APPROVED:

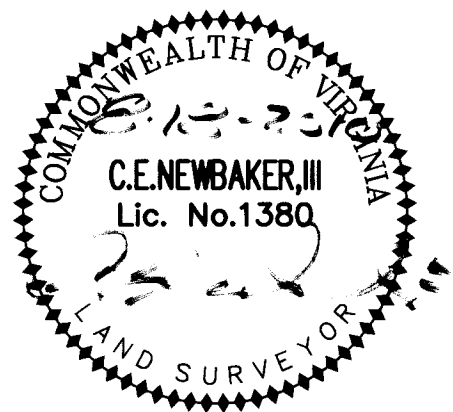
YORK COUNTY BOARD OF SUPERVISORS

BY: *U. Maddalena* DATE: 8/23/10
PLAT APPROVING AGENT

STATE OF VIRGINIA
COUNTY OF YORK
IN THE CLERK'S OFFICE OF THE CIRCUIT COURT FOR
THE COUNTY OF YORK-POQUOSON, VIRGINIA, THE
23rd DAY OF Aug., 2010, THIS PLAT
WAS PRESENTED AND ADMITTED TO RECORD AS THE
LAW DIRECTS AS INSTRUMENT NUMBER 100013782.

TESTE: *Lynn S. Mendibur* 2:40pm
CLERK

BY: *Valerie Lynn Baldwin D.C.*



CURVE TABLE

NO.	RADIUS	DELTA	ARC	TANGENT	CHORD	CHORD BRG.
1	1600.00'	06°28'53"	181.00'	90.59'	180.90'	S17°22'45"E
2	1126.35'	03°58'55"	78.28'	39.16'	78.27'	S22°27'55"E