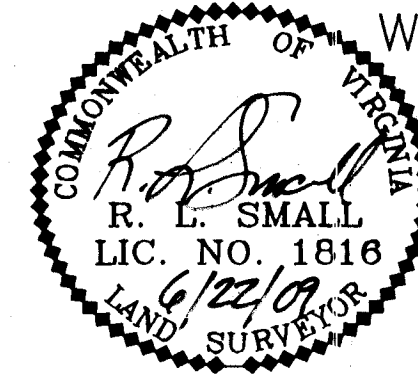


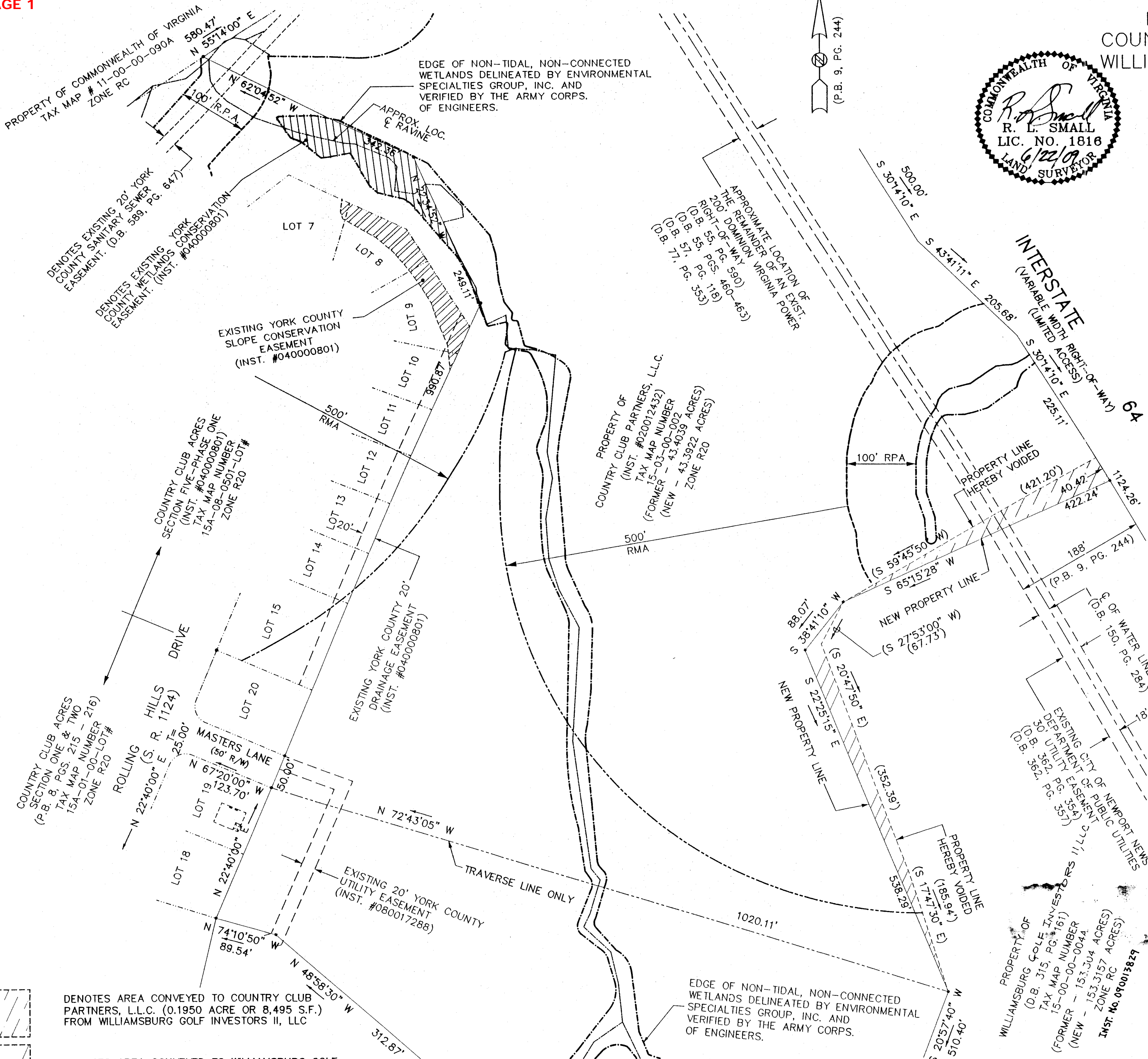
PLAT SHOWING BOUNDARY LINE ADJUSTMENT
 BETWEEN THE PROPERTIES OF
 COUNTRY CLUB PARTNERS, L.L.C. AND
 WILLIAMSBURG GOLF INVESTORS II, LLC
 BRUTON MAGISTERIAL DISTRICT
 COUNTY OF YORK, VIRGINIA
 SCALE: 1" = 100' DATE: 22 JUNE, 2009
 DAVIS & ASSOCIATES, P.C.
 SURVEYORS - PLANNERS
 3630 GEORGE WASHINGTON
 MEMORIAL HIGHWAY, STE. G
 YORKTOWN, VIRGINIA 23693
 PHONE: (757) 867-8583



0' 50' 100' 200'
 GRAPHIC SCALE
 SHEET 2 OF 2

- SYMBOLS -

- DENOTES MINIMUM BUILDING SETBACK LINE
- DENOTES IRON ROD FOUND
- DENOTES IRON RODS TO BE SET AT ALL PROPERTY LINE JUNCTURES
- DENOTES CONCRETE MONUMENT FOUND
- DENOTES CONCRETE MONUMENT TO BE SET
- DENOTES RESOURCE PROTECTION AREA
- DENOTES RESOURCE MANAGEMENT AREA



APPROVED
 YORK COUNTY BOARD OF SUPERVISORS

BY: Al Maddalena
 PLAT APPROVING AGENT

DATE: 1/7/11

STATE OF VIRGINIA
 COUNTY OF YORK
 IN THE CLERK'S OFFICE OF THE CIRCUIT
 COURT FOR THE COUNTY OF YORK-POQUOSON THE 13th
 DAY OF Jan 2011, THIS MAP WAS
 PRESENTED AND ADMITTED TO RECORD AS
 THE LAW DIRECTS AS INSTRUMENT # LR110000862
 9:42 A.M.

TESTE: LYNN S. MENDIBUR
 CLERK

BY: Valerie Lynn Babluin D.C.

DENOTES AREA CONVEYED TO COUNTRY CLUB PARTNERS, L.L.C. (0.1950 ACRE OR 8,495 S.F.) FROM WILLIAMSBURG GOLF INVESTORS II, LLC

DENOTES AREA CONVEYED TO WILLIAMSBURG GOLF INVESTORS II, LLC (0.2067 ACRE OR 9,003 S.F.) FROM COUNTRY CLUB PARTNERS, L.L.C.