

0000000427

THE VIRGINIA STATE PLANE
COORDINATE SYSTEM 1983 (NAD83),
SOUTH ZONE COUNTY OF YORK
GEODETIC CONTROL NETWORK

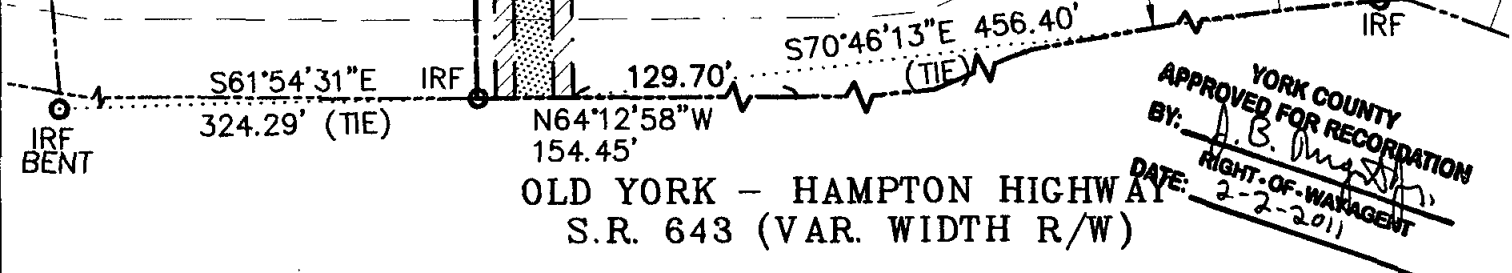
EX. VARIABLE WIDTH
VDOT DRAINAGE ESMT.
(D.B. 747, PG. 555)
N/F
TAI HSIANG, ETUX
TAX PARCEL: 024N 5JB 6
GPIN: Q09B-3348-4118
D.B. 519, PG. 745

SEE
DETAIL
'A'

JAMES E. WRIGHT, JR.
TAX PARCEL: 024 76 3
GPIN: Q09B-3047-4189
INST#: 090021455
M.B. 12, PG. 485
S.H.P.B. 7, PG. 163

N/F
WOLF, PHILLIP C.
TAX PARCEL: 024 76 2
GPIN: Q09B-2755-4301
D.B. 963, PG. 74
M.B. 12, PG. 485
S.H.P.B. 7, PG. 163

EX. 20' VIRGINIA POWER ESMT.
(D.B. 747, PG. 555)



YORK COUNTY
APPROVED FOR RECORDATION
BY: *A.B. [Signature]*
DATE: 2-2-2011
RIGHT-OF-WAY AGENT

OLD YORK - HAMPTON HIGHWAY
S.R. 643 (VAR. WIDTH R/W)

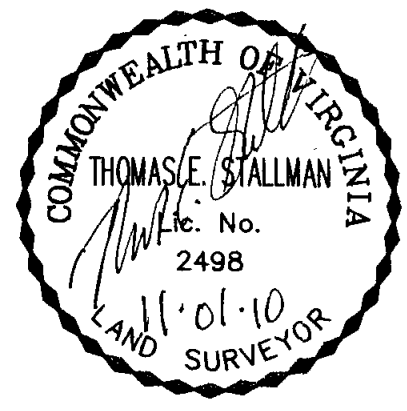
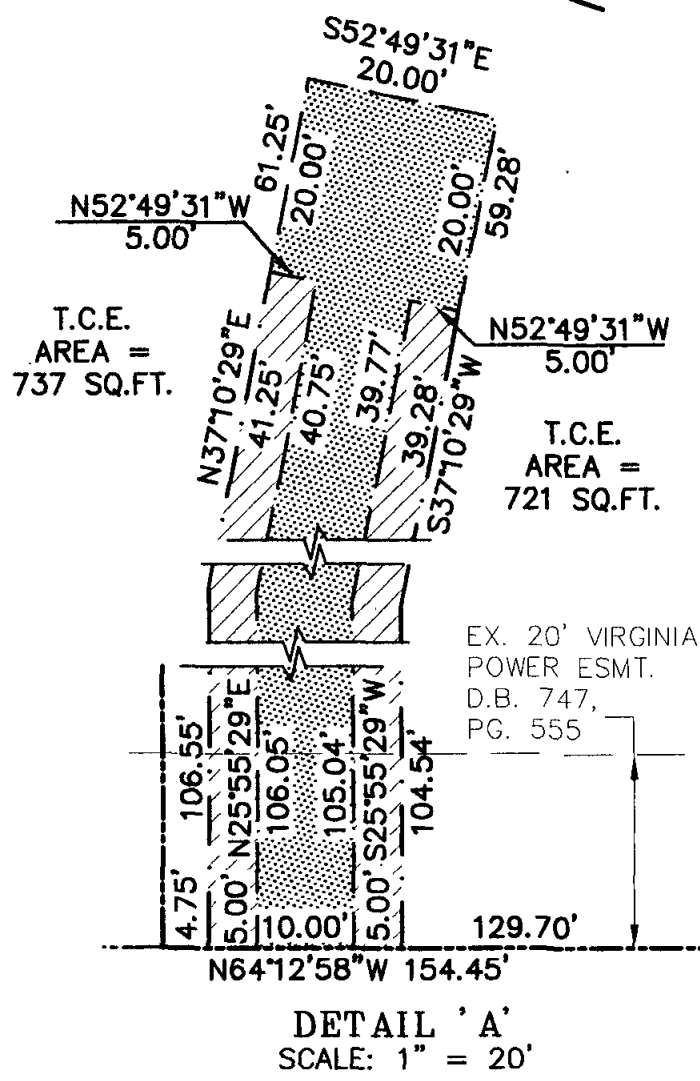
- DENOTES VARIABLE WIDTH PERMANENT UTILITY EASEMENT HEREBY CONVEYED TO THE COUNTY OF YORK. AREA = 1,858 SQ. FT.
- DENOTES 5' WIDE TEMPORARY CONSTRUCTION EASEMENT HEREBY CONVEYED TO THE COUNTY OF YORK. TOTAL AREA = 1,458 SQ. FT.

NOTES:
THE PROPERTY DELINEATED ON THIS PLAT IS LOCATED AT 2100 OLD YORK-HAMPTON HIGHWAY AND COUNTY OF YORK TAX ASSESSMENT MAP NO. 024 76 3 AND IS CURRENTLY ZONED RR.

THIS PLAT WAS PREPARED WITHOUT THE BENEFIT OF A TITLE REPORT. THEREFORE, ALL ENCUMBRANCES TO THE PROPERTY ARE NOT NECESSARILY SHOWN HEREON.

THE BOUNDARY INFORMATION SHOWN ON THIS PLAT WAS COMPILED FROM EXISTING LAND RECORDS AND CURRENT FIELD MEASUREMENTS AND REPRESENTS AN ACTUAL FIELD SURVEY. THIS PLAT DOES NOT REPRESENT A BOUNDARY SURVEY.

HORIZONTAL COORDINATE INFORMATION IS BASED ON THE VIRGINIA STATE PLANE COORDINATE SYSTEM SOUTH ZONE (NAD 83), UNITS ARE IN SURVEY FEET. COUNTY OF YORK GEODETIC CONTROL NETWORK STATIONS 56 AND 59 USED FOR THIS PROJECT.



PLAT OF EASEMENT
FROM
JAMES E. WRIGHT, JR.
TO
COUNTY OF YORK
FALCON LOBLOLLY SANITARY
VACUUM SEWER PROJECT



DATE: 11-01-2010 SCALE: 1" = 50'

ned Engineers, Surveyors
Construction Managers
716 J. Clyde Morris Boulevard, Suite A
Newport News, Virginia 23601
757. 596 . 4005
NXL J.O.: 09-11-029L