

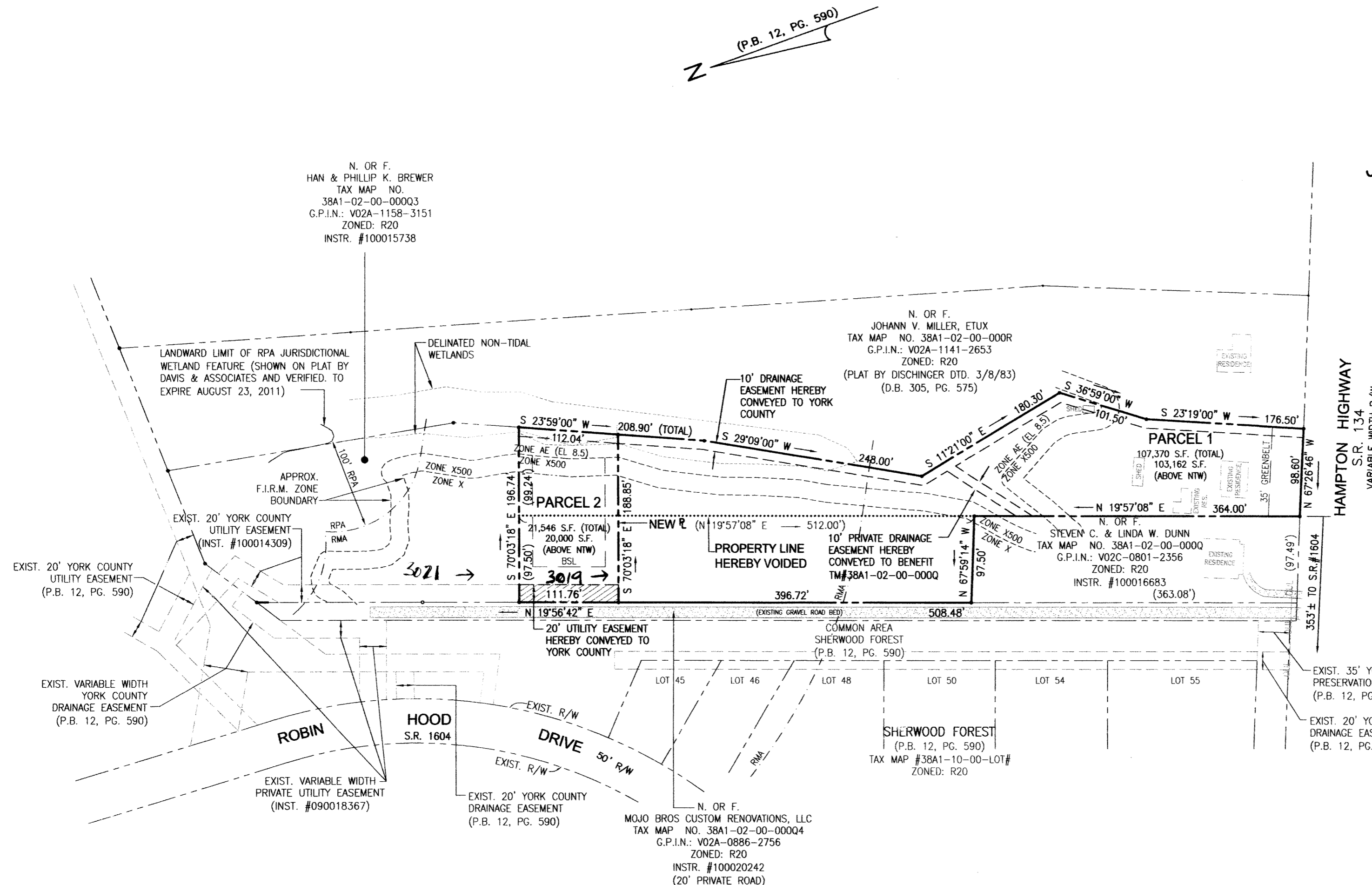
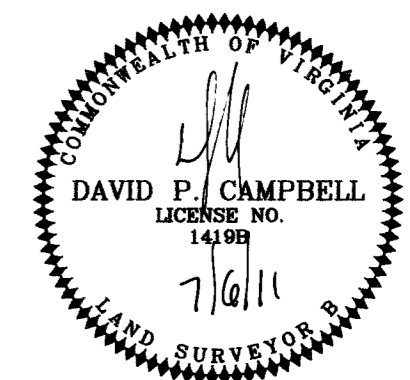
**BOUNDARY LINE ADJUSTMENT
BETWEEN TWO PROPERTIES OWNED BY
MOJO BROS CUSTOM RENOVATIONS, LLC,
A VIRGINIA LIMITED LIABILITY COMPANY**

BETHEL DISTRICT
YORK COUNTY, VIRGINIA

JANUARY 13, 2011 SCALE: 1"=100'

CAMPBELL LAND SURVEYING, INC.
P.O. BOX 855
YORKTOWN, VIRGINIA 23692
(757) 890-0837

SHEET 2 OF 2



**TOTAL AREA OF BOUNDARY LINE
ADJUSTMENT: 128,916 S.F. / 2.9595 AC.**

LEGEND

- PROPERTY LINE
- IRON PIPE/ROD FOUND
- CONCRETE MONUMENT FOUND
- IRON ROD SET
- BSL--- BUILDING SETBACK LINE
- PDE--- PROPOSED PRIVATE DRAINAGE AND/OR UTILITY EASEMENT
- NTW--- NON-TIDAL WETLANDS
- R.P.A./R.M.A.--- RESOURCE PROTECTION AREA / RESOURCE MANAGEMENT AREA

	ORIGINAL AREA	NEW AREA	AREA ABOVE NON-TIDAL WETLANDS
PARCEL 1	1.817 AC	107,370 S.F./2.4649 AC	103,162 S.F./2.3683 AC.
PARCEL 2	1.142 AC	21,546 S.F./0.4946 AC.	20,000 S.F./0.4591 AC.

**R20-SINGLE FAMILY RESIDENTIAL
MINIMUM BUILDING SETBACKS**

FRONT: 40'
SIDE: 15'
REAR: 30'

APPROVED

YORK COUNTY BOARD OF SUPERVISORS

BY: Al Maddalena
PLAT APPROVING AGENT

DATE: 8/16/11

STATE OF VIRGINIA
COUNTY OF YORK

IN THE CLERK'S OFFICE OF THE CIRCUIT COURT FOR THE COUNTY OF YORK-POQUOSON, THIS 13th DAY OF August, 2011, THIS MAP WAS PRESENTED AND ADMITTED TO RECORD AS THE LAW DIRECTS, AS INSTRUMENT NUMBER 10012803

TESTE: Lynn S Mendelsohn, Clerk
CLERK

BY: Spence S. Hughes, DC