

CONDOMINIUM PLAT OF
MICHAEL COMMONS, PHASE III,
 BUILDING NO. 13, SUITE B BUILDING NO. 14, SUITE B
 BUILDING NO. 16, SUITE C BUILDING NO. 20, SUITE A
 BUILDING NO. 21, SUITE C BUILDING NO. 22, SUITE A

Bruton District, York County, Virginia

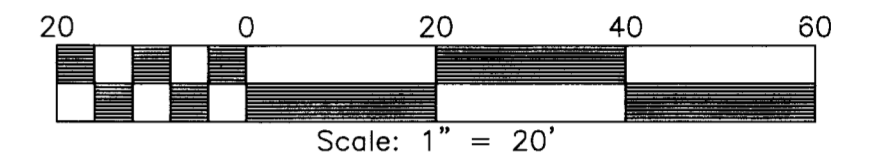
PROJECT #07-034 DATE: 01/10/2013
 (REF #05-122 & 06-028)

LandTech Resources, Inc.

Surveying • Mapping • GPS
 205-E Bulifants Boulevard, Williamsburg, Virginia 23188
 Telephone: 757-565-1677 Fax: 757-565-0782

Web: landtechresources.com

SHEET 6 OF 7



BUILDING NUMBER 21

1-STORY BRICK
 BLDG #205-C

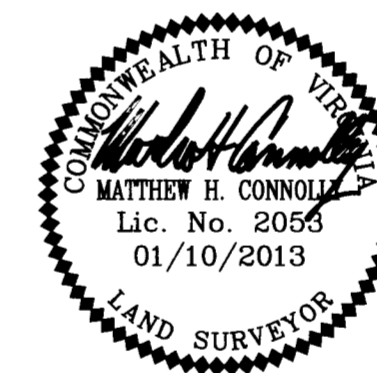
SUITE C
 1,732 S.F.

TOTAL AREA = 11,470 S.F.

THIS PLAN IS IN ACCORDANCE WITH THE DECLARATION OF MICHAEL COMMONS, PHASE I, A CONDOMINIUM DATED JULY 18, 2003 AND RECORDED AS INSTRUMENT # 030021937 AND CORRECTED IN INSTRUMENT # 080027398

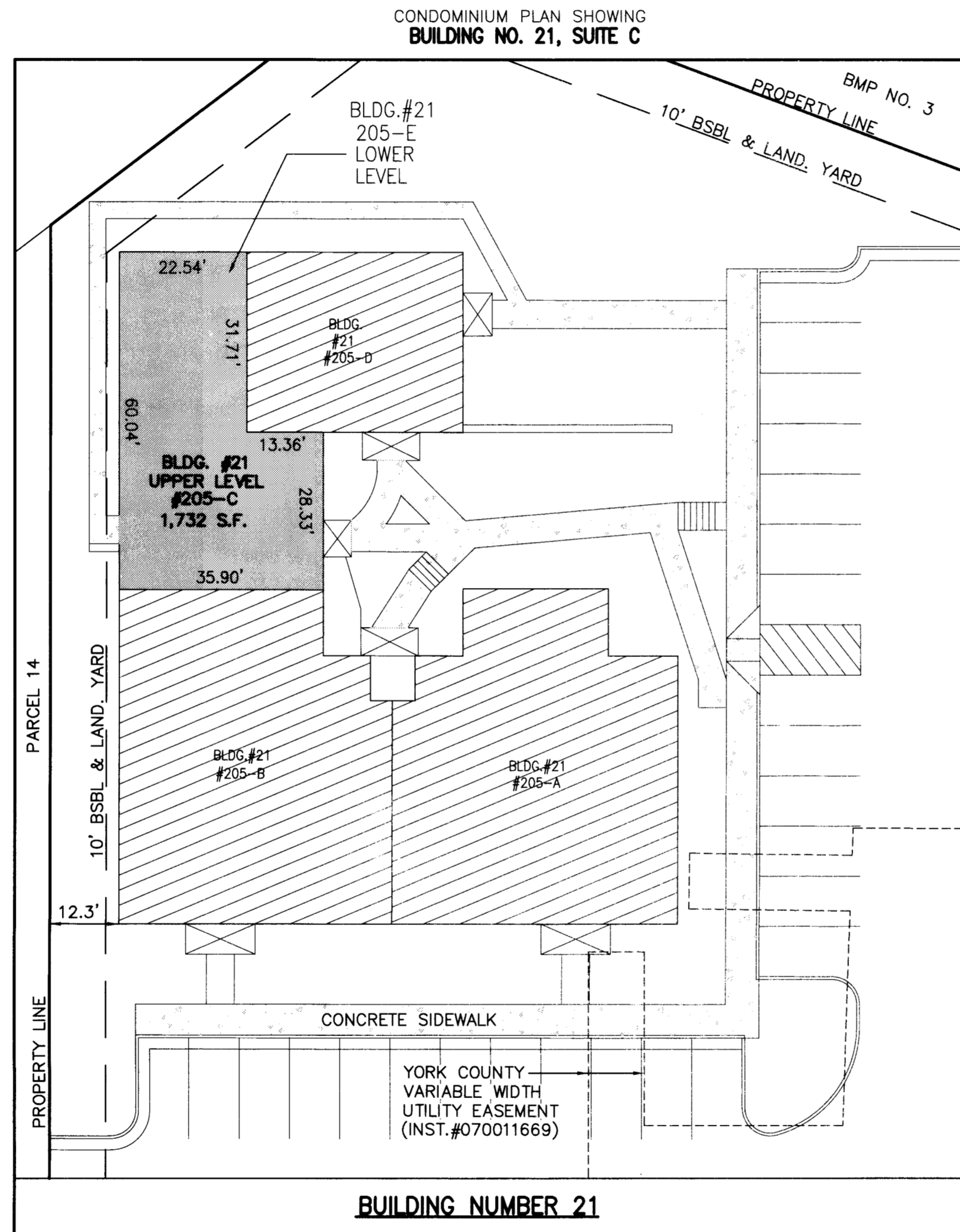
I CERTIFY THAT THIS PLAN IS ACCURATE AND COMPLIES WITH THE PROVISIONS OF SECTION 55-79.58(b) OF THE CODE OF VIRGINIA 1950 AS AMENDED AND THAT UNIT 205-C AS DEPICTED HEREON HAS BEEN SUBSTANTIALLY COMPLETED.

ALL BUILDING DIMENSIONS SHOWN HEREON ARE INTERIOR WALL DIMENSIONS AND ARE IN FEET.



LEGEND

- LCE = LIMITED COMMON ELEMENT
- = COVERED PORCH



NOTE:
 SEE SUPPLEMENTAL CONDOMINIUM PLANS RECORDED WITH CORRECTIVE SUPPLEMENTAL DECLARATION AT INSTRUMENT NO. 080027398 FOR BUILDING SECTIONS AND ELEVATIONS FOR MICHAEL COMMONS PHASE I, PHASE II AND PHASE III

APPROVED: YORK COUNTY BOARD OF SUPERVISORS
 BY: [Signature] DATE: 2/10/13
 PLAT APPROVING AGENT

STATE OF VIRGINIA
 COUNTY OF YORK
 IN THE CLERK'S OFFICE OF THE CIRCUIT COURT FOR THE COUNTY OF YORK-POQUOSON THIS 25th DAY OF February, 2013.
 THIS MAP WAS PRESENTED AND ADMITTED TO RECORD AS THE LAW DIRECTS AS INSTRUMENT NO. 130003430

TESTE: L. YAN S. MENDIBUR
 CLERK

BY: [Signature]