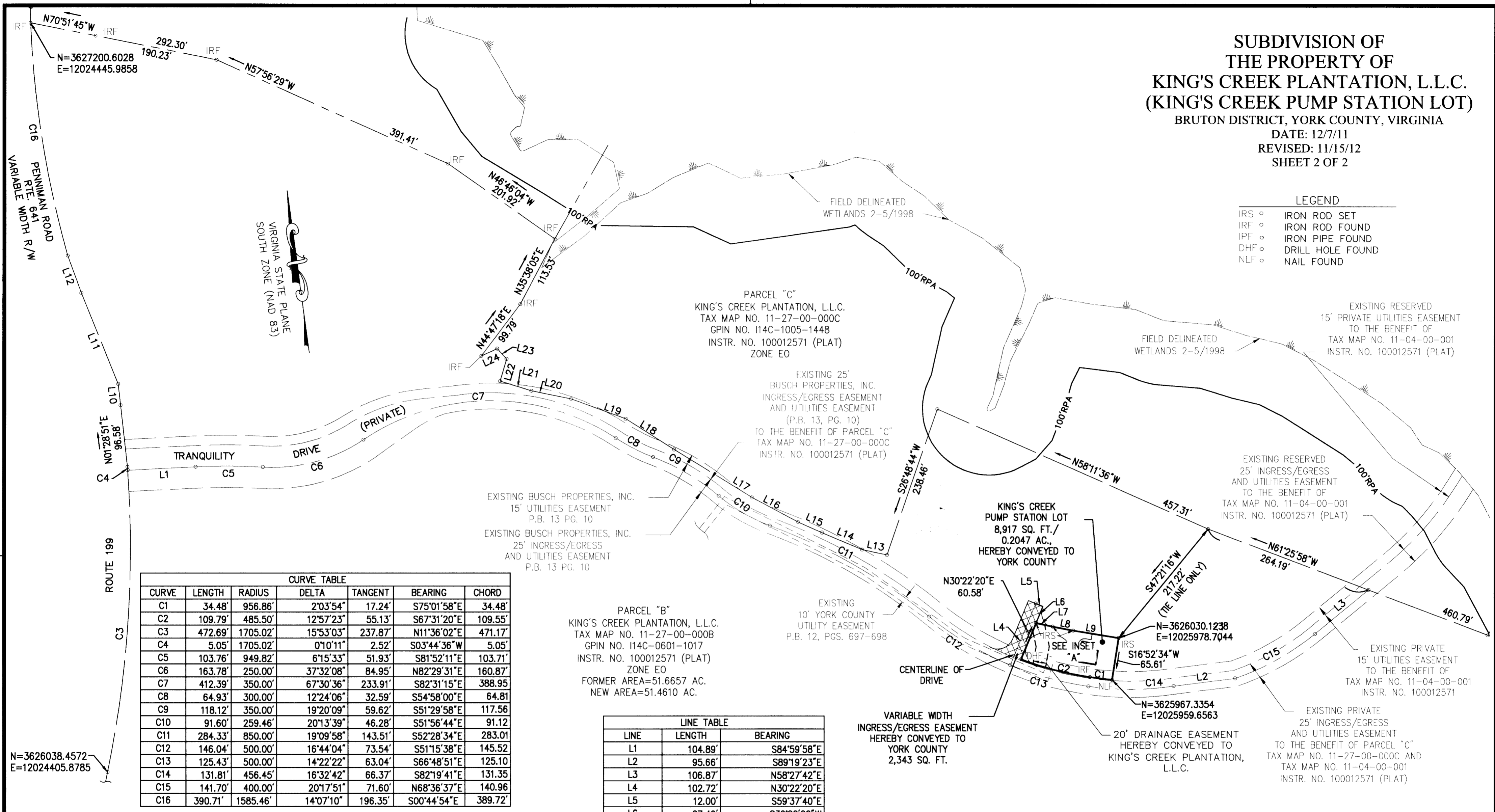


**SUBDIVISION OF  
THE PROPERTY OF  
KING'S CREEK PLANTATION, L.L.C.  
(KING'S CREEK PUMP STATION LOT)**  
BRUTON DISTRICT, YORK COUNTY, VIRGINIA  
DATE: 12/7/11  
REVISED: 11/15/12  
SHEET 2 OF 2

- LEGEND**
- IRS ○ IRON ROD SET
  - IRF ○ IRON ROD FOUND
  - IPF ○ IRON PIPE FOUND
  - DHF ○ DRILL HOLE FOUND
  - NLF ○ NAIL FOUND



**CURVE TABLE**

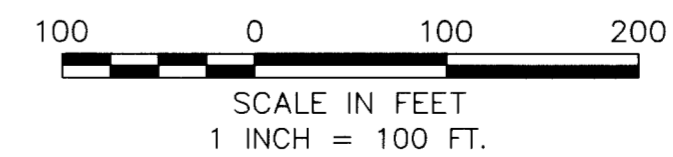
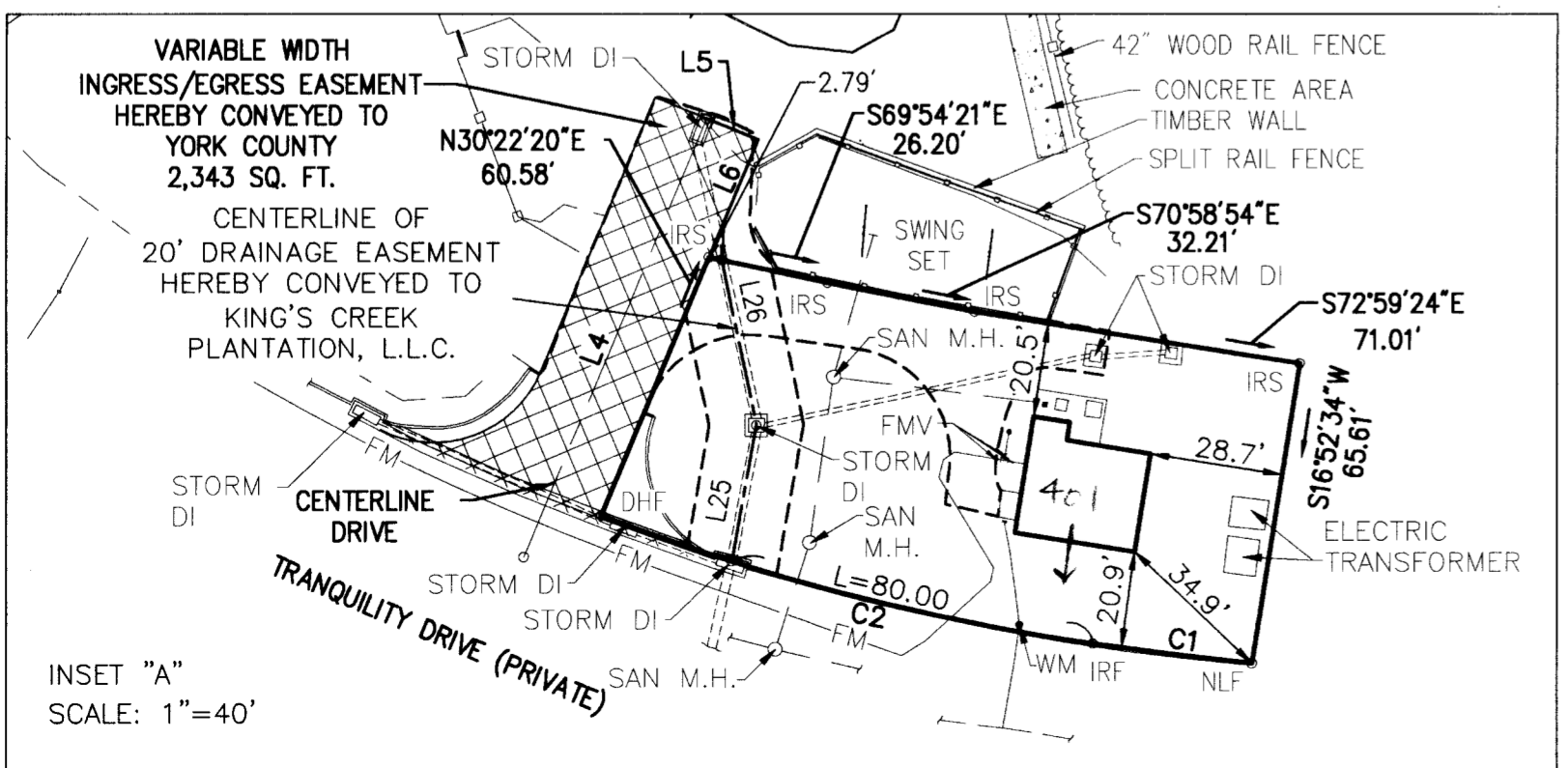
CURVE	LENGTH	RADIUS	DELTA	TANGENT	BEARING	CHORD
C1	34.48'	956.86'	2°03'54"	17.24'	S75°01'58"E	34.48'
C2	109.79'	485.50'	12°57'23"	55.13'	S67°31'20"E	109.55'
C3	472.69'	1705.02'	15°53'03"	237.87'	N11°36'02"E	471.17'
C4	5.05'	1705.02'	0°10'11"	2.52'	S03°44'36"W	5.05'
C5	103.76'	949.82'	6°15'33"	51.93'	S81°52'11"E	103.71'
C6	163.78'	250.00'	37°32'08"	84.95'	N82°29'31"E	160.87'
C7	412.39'	350.00'	67°30'36"	233.91'	S82°31'15"E	388.95'
C8	64.93'	300.00'	12°24'06"	32.59'	S54°58'00"E	64.81'
C9	118.12'	350.00'	19°20'09"	59.62'	S51°29'58"E	117.56'
C10	91.60'	259.46'	20°13'39"	46.28'	S51°56'44"E	91.12'
C11	284.33'	850.00'	19°09'58"	143.51'	S52°28'34"E	283.01'
C12	146.04'	500.00'	16°44'04"	73.54'	S51°15'38"E	145.52'
C13	125.43'	500.00'	14°22'22"	63.04'	S66°48'51"E	125.10'
C14	131.81'	456.45'	16°32'42"	66.37'	S82°19'41"E	131.35'
C15	141.70'	400.00'	20°17'51"	71.60'	N68°36'37"E	140.96'
C16	390.71'	1585.46'	14°07'10"	196.35'	S00°44'54"E	389.72'

**PARCEL "B"**  
KING'S CREEK PLANTATION, L.L.C.  
TAX MAP NO. 11-27-00-000B  
GPIN NO. I14C-0601-1017  
INSTR. NO. 100012571 (PLAT)  
ZONE EO  
FORMER AREA=51.6657 AC.  
NEW AREA=51.4610 AC.

**LINE TABLE**

LINE	LENGTH	BEARING
L1	104.89'	S84°59'58"E
L2	95.66'	S89°19'23"E
L3	106.87'	N58°27'42"E
L4	102.72'	N30°22'20"E
L5	12.00'	S59°37'40"E
L6	27.49'	S30°22'20"W
L7	26.20'	S69°54'21"E
L8	32.21'	S70°58'54"E
L9	71.01'	S72°59'24"E
L10	33.00'	N01°28'51"E
L11	151.19'	N14°15'36"W
L12	61.03'	N12°24'32"W
L13	39.14'	N70°07'45"W
L14	67.24'	N59°10'06"W
L15	40.45'	N58°22'36"W
L16	80.39'	N54°07'30"W
L17	141.16'	N50°26'09"W
L18	88.77'	N49°29'28"W
L19	89.84'	N62°06'48"W
L20	62.39'	N70°31'04"W
L21	50.51'	N65°06'03"W
L22	35.61'	N24°07'02"E
L23	21.40'	N34°07'16"W
L24	26.97'	S73°05'22"W
L25	29.86'	N18°03'16"E
L26	36.62'	N03°53'49"W

N=3626038.4572  
E=12024405.8785



**Vanasse Hangen Brustlin, Inc.**  
Transportation Land Development Environmental Services  
351 McLaw Circle, Suite 3  
Williamsburg, Virginia 23185  
(757) 220-0500 • FAX (757) 220-8544

APPROVED:  
YORK COUNTY BOARD OF SUPERVISORS  
BY: *M. Maddalena*  
PLAT APPROVING AGENT  
DATE: 3/15/13

STATE OF VIRGINIA, COUNTY OF YORK  
IN THE CLERK'S OFFICE OF THE CIRCUIT COURT FOR THE COUNTY OF YORK-POQUOSON THE 20<sup>th</sup> DAY OF March 2013, THIS MAP WAS PRESENTED AND ADMITTED TO RECORD AS THE LAW DIRECTS AS IT IS THE INSTRUMENT NO. 130005289  
TESTE: *Stephanie Mendicino*  
CLERK  
BY: *Victoria H. Smith D.C.*