

REF. DB 316 PG 239, PLAT (YORK COUNTY)
 DB 1115 PG 2061 (NEWPORT NEWS)
 DB 93 PG 385, PLAT (NEWPORT NEWS)
 DB 104 PG 311, PLAT (NEWPORT NEWS)
 PLAT ENTITLED "PLAT OF THE PROPERTY OF PEARLINE WASHINGTON, PARCEL OF LAND CONTAINING 0.7750 ACRE, COUNTY OF YORK, VA. DATED MAY 7, 1985 BY DAVIS & ASSOCIATES (UNRECORDED)

YORK COUNTY GEODETIC STA. 045
 VA STATE PLANE, (SOUTH), NAD 1983

THE PURPOSE OF THIS PLAT IS TO ALLEVIATE THE OVERLAP BETWEEN THE PROPERTIES OF ERNEST A. & TERESA A. STUBBS AND HAMPTON ROADS DEVELOPMENT, LLC AS SHOWN AND TO ADJUST THE BOUNDARY LINE BETWEEN THEM AS SHOWN HEREON.

OTHER DISCREPANCIES NOTED ON THIS PLAT MAY BE RESOLVED BY OTHER PARTIES AS THEY DEEM NECESSARY.

PLAT SHOWING A
 BOUNDARY LINE ADJUSTMENT
 BETWEEN THE PROPERTIES OF
 HAMPTON ROADS DEVELOPMENT, LLC
 AND
 ERNEST A. & TERESA A. STUBBS
 NELSON DISTRICT, YORK COUNTY, VIRGINIA

OCTOBER 2, 2012

ADPA A.D. POTTS & ASSOCIATES, INC.
 11524 JEFFERSON AVENUE
 NEWPORT NEWS, VIRGINIA 23601
 PHONE: (757) 595-4610



SCALE: 1"=100'
 SHEET 2 OF 2

LINE	BEARING	DISTANCE
L1	S 65°03'30" E	124.06'
(L2)	(S 65°03'30" E)	(130.62')
L3	S 65°03'30" E	285.05'
(L4)	(S 72°05'39" E)	(4.70')
L5	S 72°05'39" E	144.97'
(L6)	(S 72°05'39" E)	(148.33')
L7	S 72°05'39" E	399.71'
L8	N 26°58'02" E	64.22'
L9	N 37°42'39" W	51.14'
L10	N 68°56'46" W	153.32'
L11	N 34°53'47" E	100.01'
L12	N 26°58'02" E	91.88'
L13	N 68°56'46" W	199.79'
L14	S 65°03'30" E	30.39'
L15	S 72°05'39" E	129.83'
L16	S 17°54'21" W	16.00'

* UTILITY EASEMENT SHOWN PER SKETCH BY AES DATED 8/14/91, REV. 11/22/91 DB 639 PG 740, DB 645 PG 478

N. or F. ERNEST A. & TERESA A. STUBBS
 DB 803 PG 380
 GPIN #M10A-1983-3656
 TAX MAP #17-00-00-005A
 ZONE: R13
 NEW AREA
 36,727 SQ. FT.
 0.8431 ACRES
 FORMER AREA
 35,690 SQ. FT.
 0.8193 ACRES

N. or F. D.A. & S.E. MUNDY
 INSTRUMENT #080022156
 TAX MAP #002000209

* EXISTING 16' YORK COUNTY PERMANENT UTILITY EASEMENT (D.B. 639 PG 740)

SEE DETAIL BELOW

N. or F. P. WASHINGTON
 DB 294 PG 540
 GPIN #M10A-2012-3838
 TAX MAP #17-00-00-005
 ZONE: R13

JOSEPH R. SMITH SUBDIVISION
 PB 9 PG 228

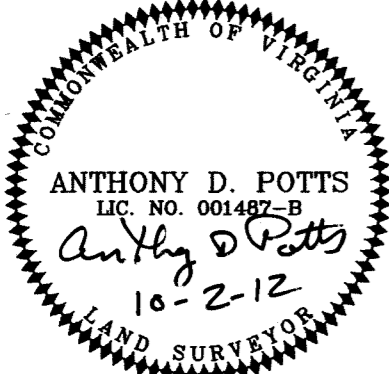
N. or F. HAMPTON ROADS DEVELOPMENT, LLC
 LOT 1
 INSTRUMENT #080014748
 GPIN #M10B-2560-4103
 TAX MAP #17-03-00-001
 ZONE: R13

EXISTING 10' PRIVATE UTILITY EASEMENT FOR LOT 2, INSTR. #020005316 (TAX MAP #17-03-00-002)

JOSEPH R. SMITH SUBDIVISION
 PB 9 PG 226
 N. or F. R.A. BURNETTE, etux
 LOT 2
 INSTR. #010004363
 GPIN #M10B-2835-3828
 TAX MAP #17-03-00-002
 ZONE: R13

N. or F. HAMPTON ROADS DEVELOPMENT, LLC
 INSTRUMENT #040016873 & #040016998
 DB 93 PG 385 (PLAT, NEWPORT NEWS)
 GPIN #M10B-2549-3659
 TAX MAP #17-00-00-011
 ZONE: R13
 NEW AREA
 121,497 SQ. FT.
 2,7892 ACRES
 FORMER AREA
 123,758 SQ. FT.
 2,8411 ACRES

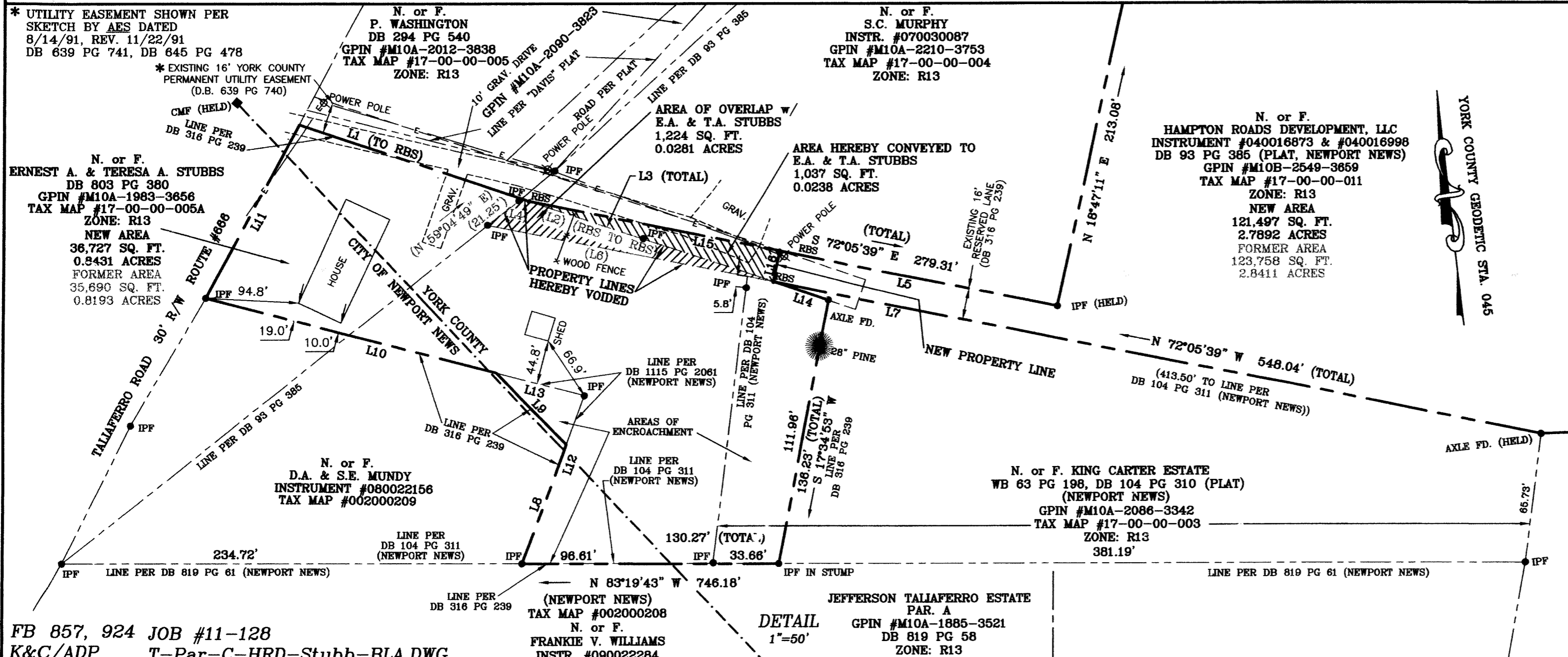
N. or F. CITY OF NEWPORT NEWS
 DB 51 PG 2 (NEWPORT NEWS)
 INSTR. #010012962
 GPIN #N10C-1663-1736
 TAX MAP #23-00-00-014
 ZONE: RC



I HEREBY CERTIFY THAT THIS BOUNDARY SURVEY, TO THE BEST OF MY KNOWLEDGE AND BELIEF IS CORRECT AND COMPLIES WITH THE MINIMUM PROCEDURES AND STANDARDS ESTABLISHED BY THE VIRGINIA BOARD FOR ARCHITECTS, PROFESSIONAL ENGINEERS, LAND SURVEYORS, CERTIFIED INTERIOR DESIGNERS AND LANDSCAPE ARCHITECTS.

Anthony D. Potts
 ANTHONY D. POTTS, L.S.

* UTILITY EASEMENT SHOWN PER SKETCH BY AES DATED 8/14/91, REV. 11/22/91 DB 639 PG 741, DB 645 PG 478



APPROVED
 YORK COUNTY BOARD OF SUPERVISORS
 BY: W. Maddame
 PLAT APPROVING AGENT
 DATE: 3/27/13

STATE OF VIRGINIA
 COUNTY OF YORK
 IN THE CLERK'S OFFICE OF THE CIRCUIT COURT
 FOR THE COUNTY OF YORK-PQUOSON, ON
 THIS 20th DAY OF April, 2013
 THIS MAP WAS PRESENTED AND ADMITTED TO RECORD
 AS THE LAW DIRECTS, AS INSTRUMENT
 NUMBER 130115858 8:54 AM
 TESTE: Lynn S. Mendibur
 CLERK
 BY: Salvatore...
 DEPUTY CLERK
 FILE NO. 10-1189