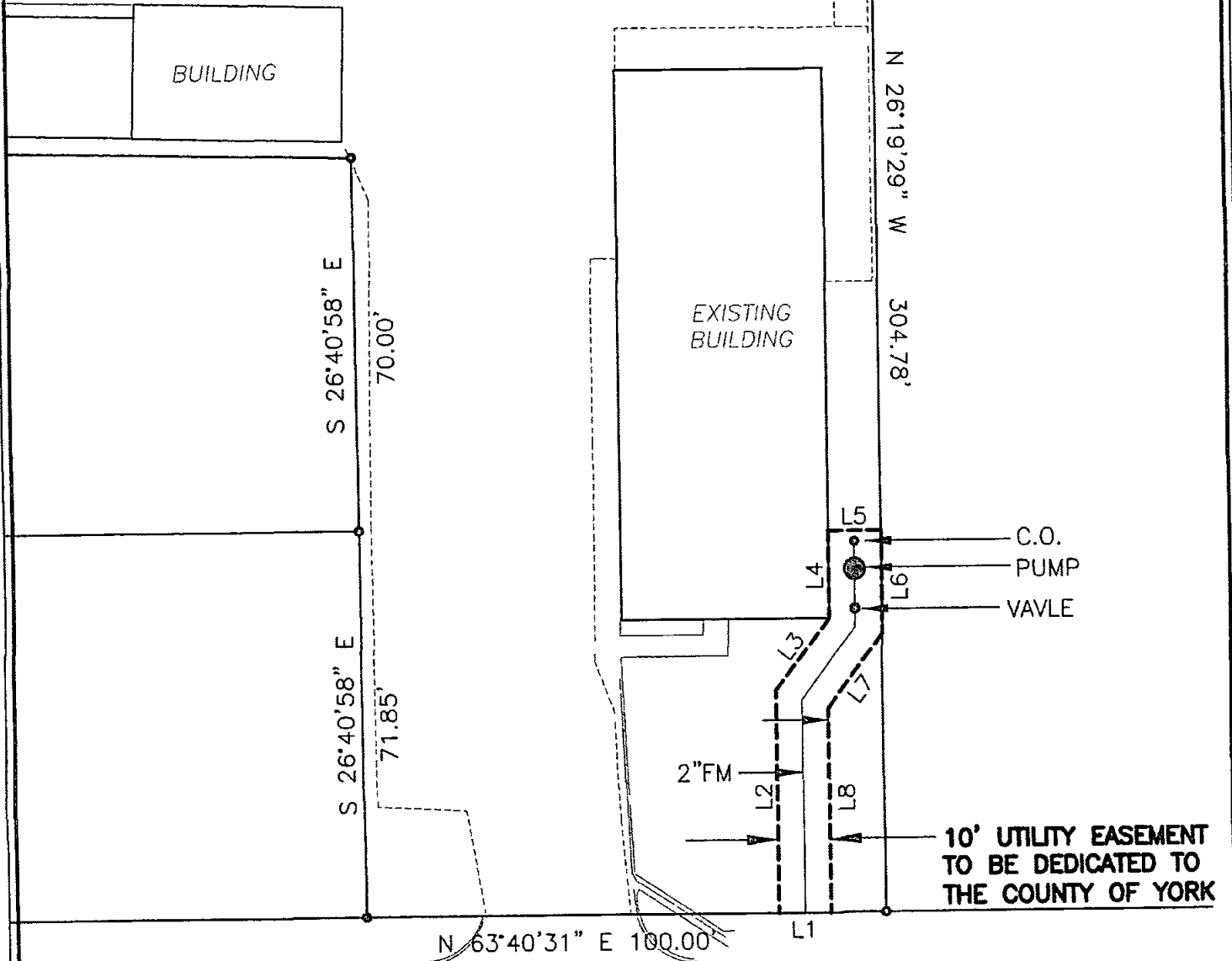
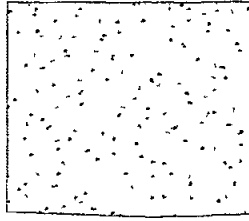


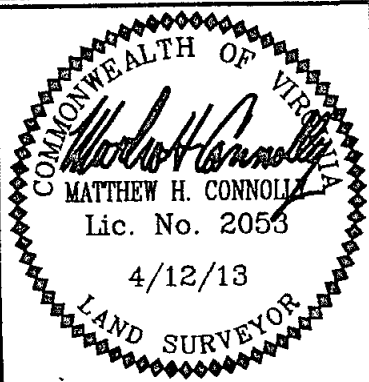
**G & V, LLC**  
 INSTRUMENT #120004837  
 GPIN: R08C-0016-0649

EX GRAVEL



**GREENE DRIVE - ROUTE 1290**  
 (50' R/W)

NO	BEARING	DIST	NO.	BEARING	DIST
L1	N 63°40'31" E	10.00'	L5	S 63°45'03" W	10.21'
L2	S 26°14'57" E	41.38'	L6	N 26°18'18" W	19.20'
L3	S 11°10'25" W	17.00'	L7	N 11°10'25" E	17.37'
L4	S 26°14'57" E	16.10'	L8	N 26°14'57" W	37.98'



SHEET 2 OF 2  
 DATE: 4/12/13  
 SCALE: 1"=30'  
 JOB# 12-122

UTILITY EASEMENT TO  
**THE COUNTY OF YORK**  
 FROM  
**G & V, LLC**  
 GRAFTON DISTRICT YORK COUNTY VIRGINIA

**LandTech Resources, Inc.**  
 Surveying • GPS • Engineering  
 205 Bulifants Boulevard, Suite E, Williamsburg, Virginia 23188  
 Telephone: 757-565-1677 Fax: 757-565-0782  
 Web: landtechresources.com