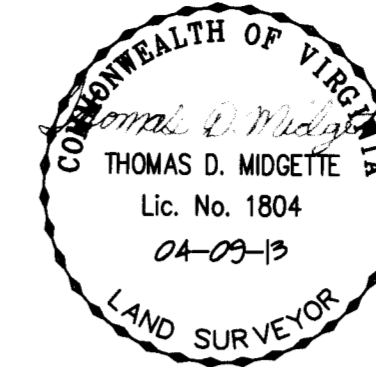
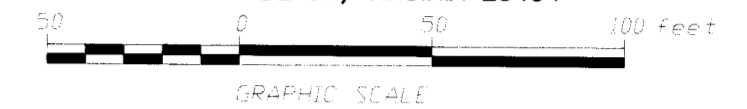


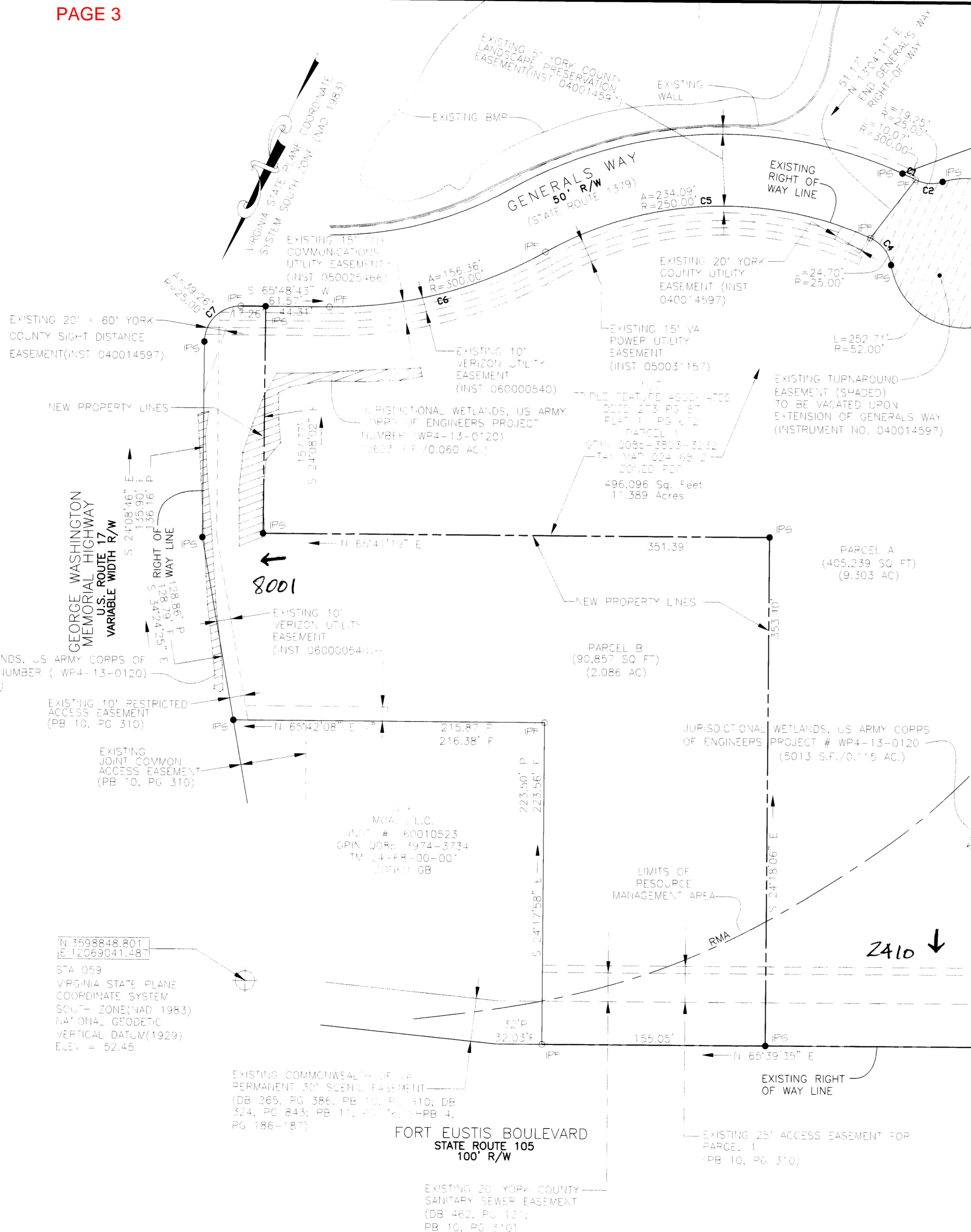
SUBDIVISION OF THE PROPERTY
 OF
 TRIPLE FEATURE ASSOCIATES,
 A VIRGINIA LIMITED PARTNERSHIP
 NELSON DISTRICT - COUNTY OF YORK, VIRGINIA
 (SCALE: 1"=50') APRIL 9, 2013
 SHEET 2 OF 3



NDI ENGINEERING COMPANY
BASGIER AND ASSOCIATES DIVISION
 ENGINEERS-SURVEYORS-PLANNERS
 572 CENTRAL DRIVE, SUITE 103
 tele (757)431-2177, fax (757)431-2175
 VIRGINIA BEACH, VIRGINIA 23454



CURVE	RADIUS	ARC LENGTH	CHORD LENGTH	CHORD BEARING	DELTA ANGLE	TANGENT
C1	300.00'	10.07'	10.07'	S 89°04'57" E	1°55'25"	5.04'
C2	25.00'	19.25'	18.78'	N 69°48'43" E	44°06'38"	10.13'
C3	52.00'	252.71'	-	-	278°26'52"	-
C4	25.00'	24.70'	23.71'	N 62°05'24" W	56°35'57"	13.46'
C5	250.00'	234.09'	225.63'	S 62°46'32" W	53°39'01"	126.42'
C6	300.00'	156.36'	154.59'	S 50°52'52" W	29°51'43"	80.00'
C7	25.00'	39.26'	35.35'	S 20°49'25" W	89°58'38"	24.99'



MATCHLINE (SEE SHEET 3)

PIN LEGEND

- IPF IRON PIN FOUND
- IPS IRON PIN SET
- CPF CONCRETED STEEL PIN FOUND
- CPS CONCRETED STEEL PIN SET
- RMA RESOURCE MANAGEMENT AREA
- WETLANDS JURISDICTIONAL WETLANDS
- TURNAROUND EXISTING TURNAROUND EASEMENT

APPROVED:
 YORK COUNTY BOARD OF SUPERVISORS
 BY: Al Maddalena
 PLAT APPROVING AGENT
 DATE: 6/12/13

STATE OF VIRGINIA
 COUNTY OF YORK
 IN THE CLERK'S OFFICE OF THE CIRCUIT COURT THE COUNTY
 OF YORK, THE 17th DAY OF June, 2013
 THIS MAP WAS PRESENTED AND ADMITTED TO RECORD AS THE
 LAW DIRECTS AS INSTRUMENT NUMBER 130011191
 TESTE: Lynn S. Mendibaur 10:02 AM
 CLERK
 BY: Calvin D. Patton Jr