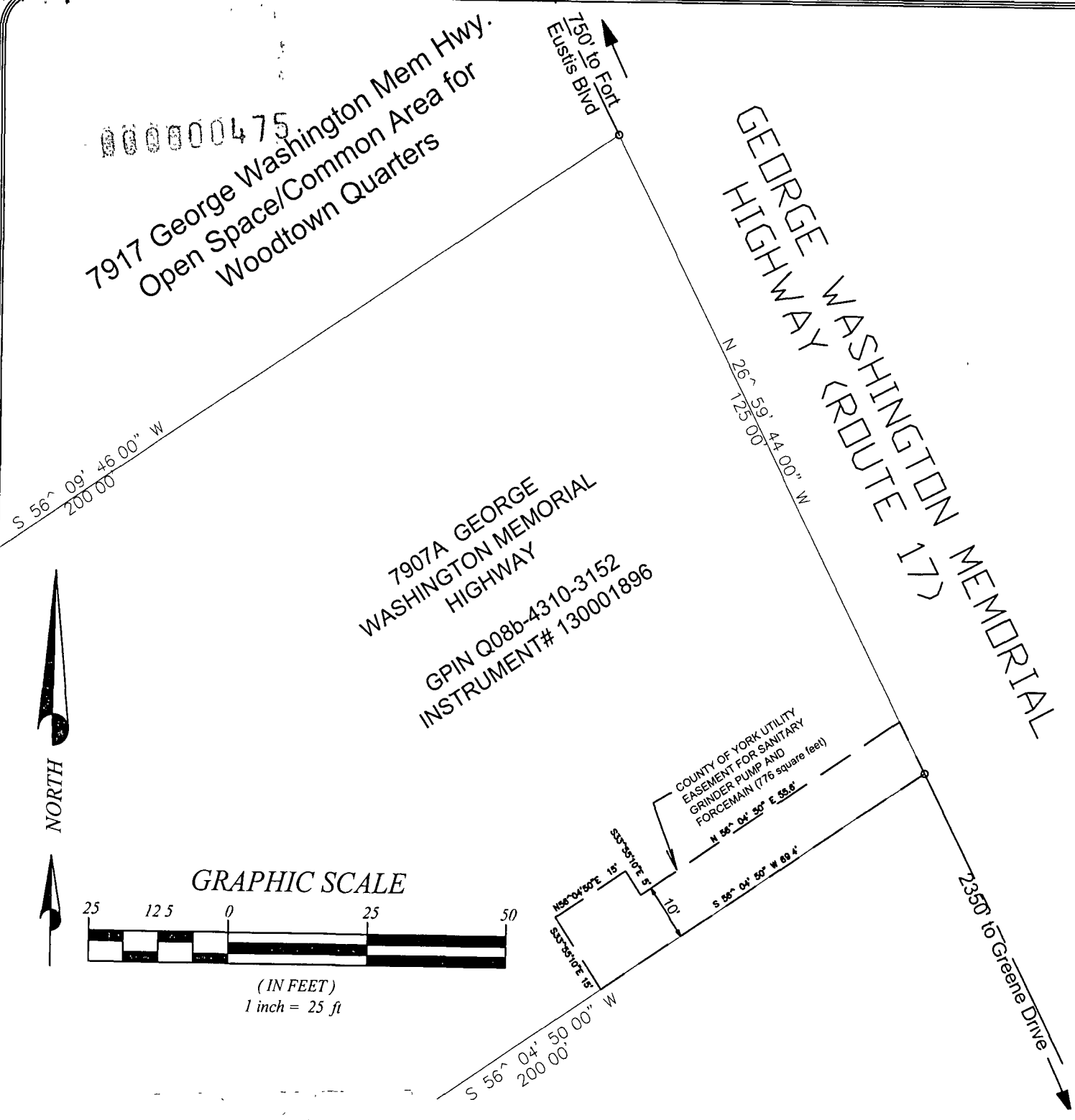
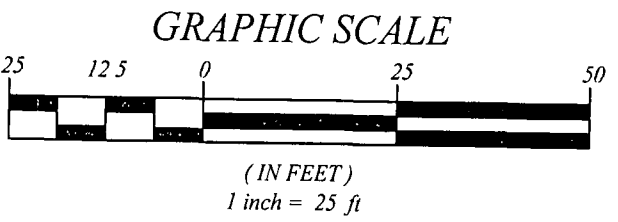


000000475  
 7917 George Washington Mem Hwy.  
 Open Space/Common Area for  
 Woodtown Quarters



NORTH



**NOTES:**

1. HORIZONTAL COORDINATE INFORMATION IS BASED ON THE VIRGINIA STATE PLANE COORDINATE SYSTEM SOUTH ZONE (NAD 83), UNITS ARE U.S. SURVEY FEET, CONTROL INFORMATION PROVIDED BY Mel Hopkins Engineering LLC
2. THIS PLAT IS FOR EASEMENT PURPOSES ONLY AND DOES NOT CONSTITUTE A PHYSICAL OR BOUNDARY SURVEY
3. TOPOGRAPHIC INFORMATION, IF SHOWN, WAS PROVIDED BY Mel Hopkins Engineering, LLC.

PLAT OF EASEMENT by  
 EDN ENTERPRISES, LLC

TO: COUNTY OF YORK

PROJECT: 7907A George Washington Memorial Highway

**MEL HOPKINS ENGINEERING, LLC**  
 204 WALDEN DRIVE  
 YORK COUNTY, VA 23692  
 757-812-9818    hopkinsix@cox.net

DRAWN BY: MEH	SCALE: 1"=25'	DATE: 09/16/2013
------------------	------------------	---------------------