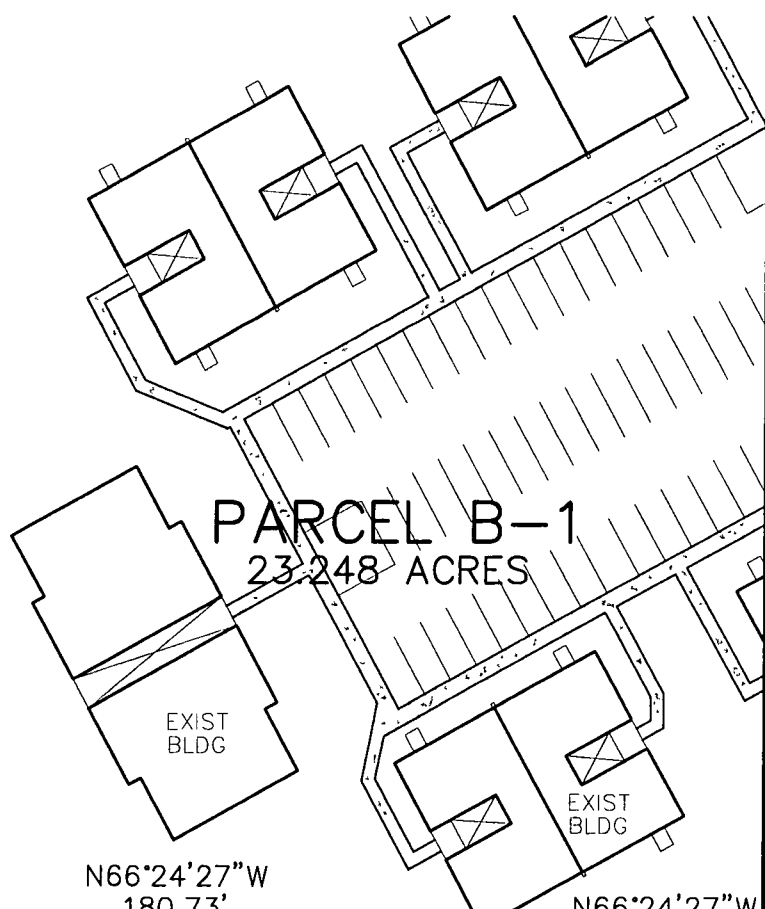


0000000029

N/F
 GEORGETOWN LLC
 GPIN: V02C-1588-1489
 TAX MAP: 38A1-02-00-010D
 INSTRUMENT NO. 020005356
 ZONE: RMF

1034.69'
 S23°35'33"W



MATCH LINE SHEET 2

N66°24'27"W 180.73'
 N66°24'27"W 247.88'

35'
 L1 L2 L3
 30'

801.61' S66°24'27"E
 LANDSCAPE PRESERVATION
 EASEMENT HEREBY CONVEYED
 TO THE COUNTY OF YORK

HAMPTON HIGHWAY
 STATE ROUTE 134 - 160' R/W

LINE TABLE		
LINE	LENGTH	BEARING
L1	5.00'	N23°35'33"E
L2	20.00'	N66°24'27"W
L3	5.00'	S23°35'33"W

YORK COUNTY
 APPROVED FOR RECORDATION
 BY: *W. Maddalena*
 CHIEF OF DEVELOPMENT & COMPLIANCE
 DATE: 10/15/13

2013 OCT 16 AM 8:29

PLAT OF A LANDSCAPE
 PRESERVATION EASEMENT TO BE
 CONVEYED TO THE COUNTY OF YORK

PROPERTY OF
FP-1 LLC

COUNTY OF YORK, VIRGINIA



PENNONI ASSOCIATES, INC.
 Consulting Engineers
 #410 North Center Drive, Suite 100
 Chesapeake Building 9
 Norfolk, Virginia 23502
 T 757 497 7472 F 757 497 0250