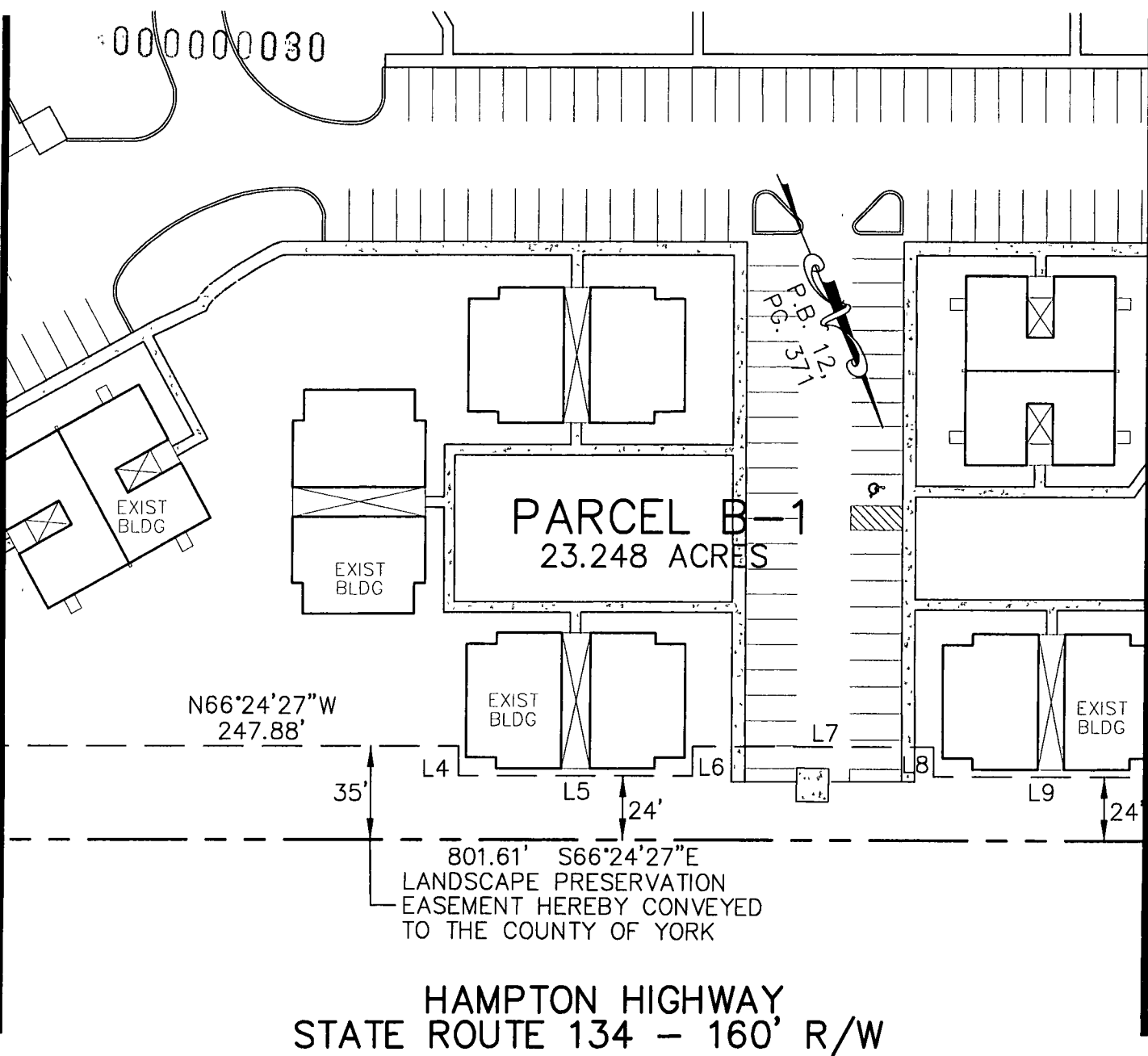


000000030

MATCH LINE SHEET 1

MATCH LINE SHEET 3



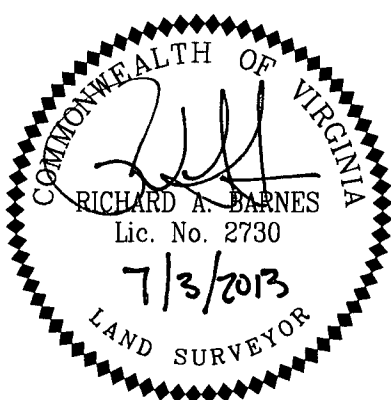
801.61' S66°24'27"E
LANDSCAPE PRESERVATION
EASEMENT HEREBY CONVEYED
TO THE COUNTY OF YORK

HAMPTON HIGHWAY
STATE ROUTE 134 - 160' R/W

LINE TABLE		
LINE	LENGTH	BEARING
L4	11.00'	N23°35'33"E
L5	90.00'	N66°24'27"W
L6	11.00'	S23°35'33"W
L7	92.75'	N66°24'27"W
L8	11.00'	N23°35'33"E
L9	90.00'	N66°24'27"W

YORK COUNTY
APPROVED FOR RECORDATION
BY: *[Signature]*
CHIEF OF DEVELOPMENT & COMPLIANCE
DATE: 10/15/13

2013 OCT 16 AM 8:28



PLAT OF A LANDSCAPE
PRESERVATION EASEMENT TO BE
CONVEYED TO THE COUNTY OF YORK

PROPERTY OF
FP-1 LLC

COUNTY OF YORK, VIRGINIA



PENNONI ASSOCIATES, INC.
Consulting Engineers
#410 North Center Drive, Suite 100
Chesapeake Building 9
Norfolk, Virginia 23502
T 757 497 7472 F 757 497.0250