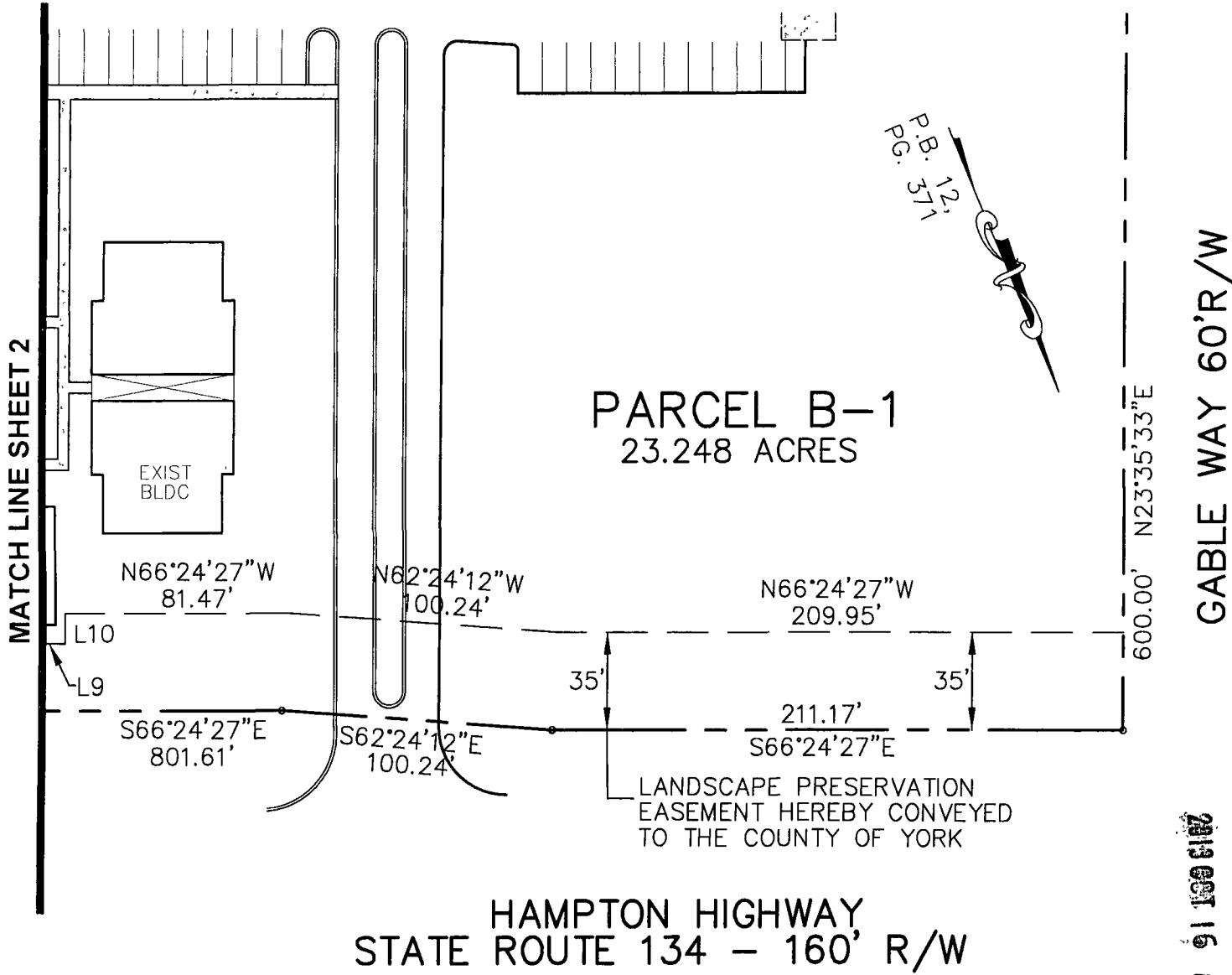


000000031

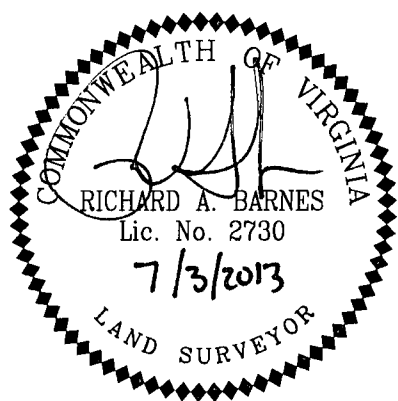


2013 OCT 16 AM 8:29

LINE TABLE		
LINE	LENGTH	BEARING
L9	90.00'	N66°24'27"W
L10	11.00'	S23°35'33"W

YORK COUNTY
APPROVED FOR RECORDATION
BY: *Al Maddalena*
CHIEF OF DEVELOPMENT & COMPLIANCE
DATE: 10/15/13

PLAT OF A LANDSCAPE
PRESERVATION EASEMENT TO BE
CONVEYED TO THE COUNTY OF YORK
PROPERTY OF
FP-1 LLC
COUNTY OF YORK, VIRGINIA



PENNONI ASSOCIATES, INC.
Consulting Engineers
#410 North Center Drive, Suite 100
Chesapeake Building 9
Norfolk, Virginia 23502
T 757.497.7472 F 757.497.0250