

**BOUNDARY LINE ADJUSTMENT
BETWEEN THE PROPERTIES OF
KING'S CREEK PLANTATION, L.L.C.**

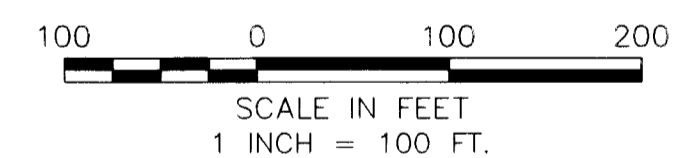
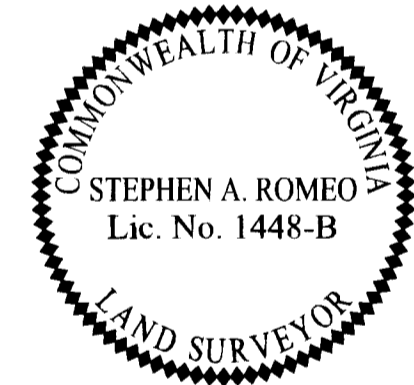
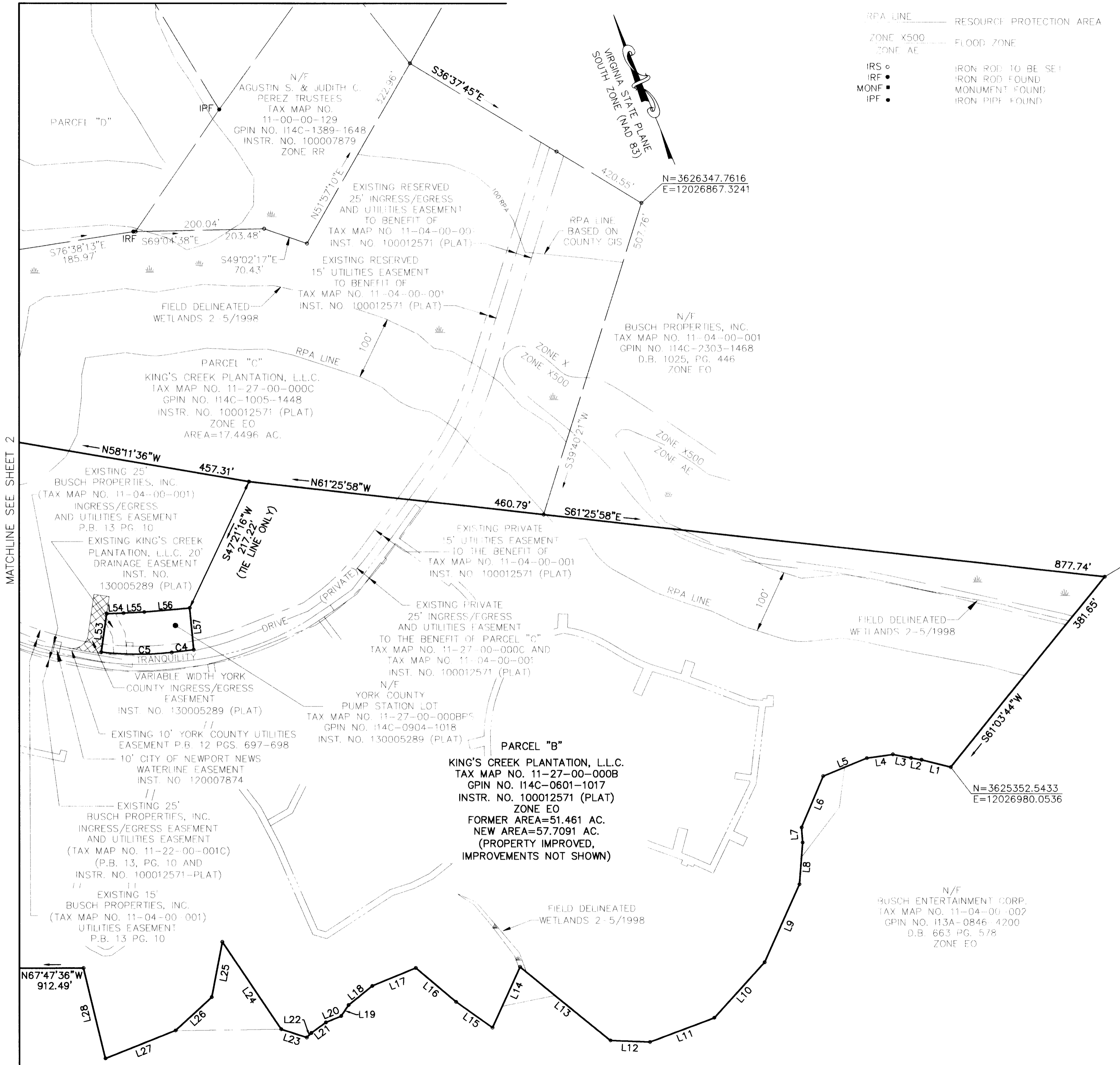
BRUTON DISTRICT, YORK COUNTY, VIRGINIA
DATE: 7/3/13 SCALE: 1"=100'
SHEET 3 OF 4



Vanasse Hangen Brustlin, Inc.
Transportation Land Development Environmental Services
351 McLaws Circle, Suite 3
Williamsburg, Virginia 23185
(757) 220-0500 • FAX (757) 220-8544

LEGEND

- RPA LINE _____ RESOURCE PROTECTION AREA
- ZONE X500 _____ FLOOD ZONE
- ZONE AE _____
- IRS ○ IRON ROD TO BE SET
- IRF ● IRON ROD FOUND
- MONF ■ MONUMENT FOUND
- IPF ● IRON PIPE FOUND



APPROVED:
YORK COUNTY BOARD OF SUPERVISORS
BY: [Signature]
PLAT APPROVING AGENT
DATE: 7/3/13

STATE OF VIRGINIA, COUNTY OF YORK
IN THE CLERK'S OFFICE OF THE CIRCUIT COURT FOR THE COUNTY OF YORK-POQUOSON THE 3 DAY OF July, 2013, THIS MAP WAS PRESENTED AND ADMITTED TO RECORD AS THE LAW DIRECTS AS INSTRUMENT NO. 13-00000000
TESTE: _____
CLERK
BY: _____