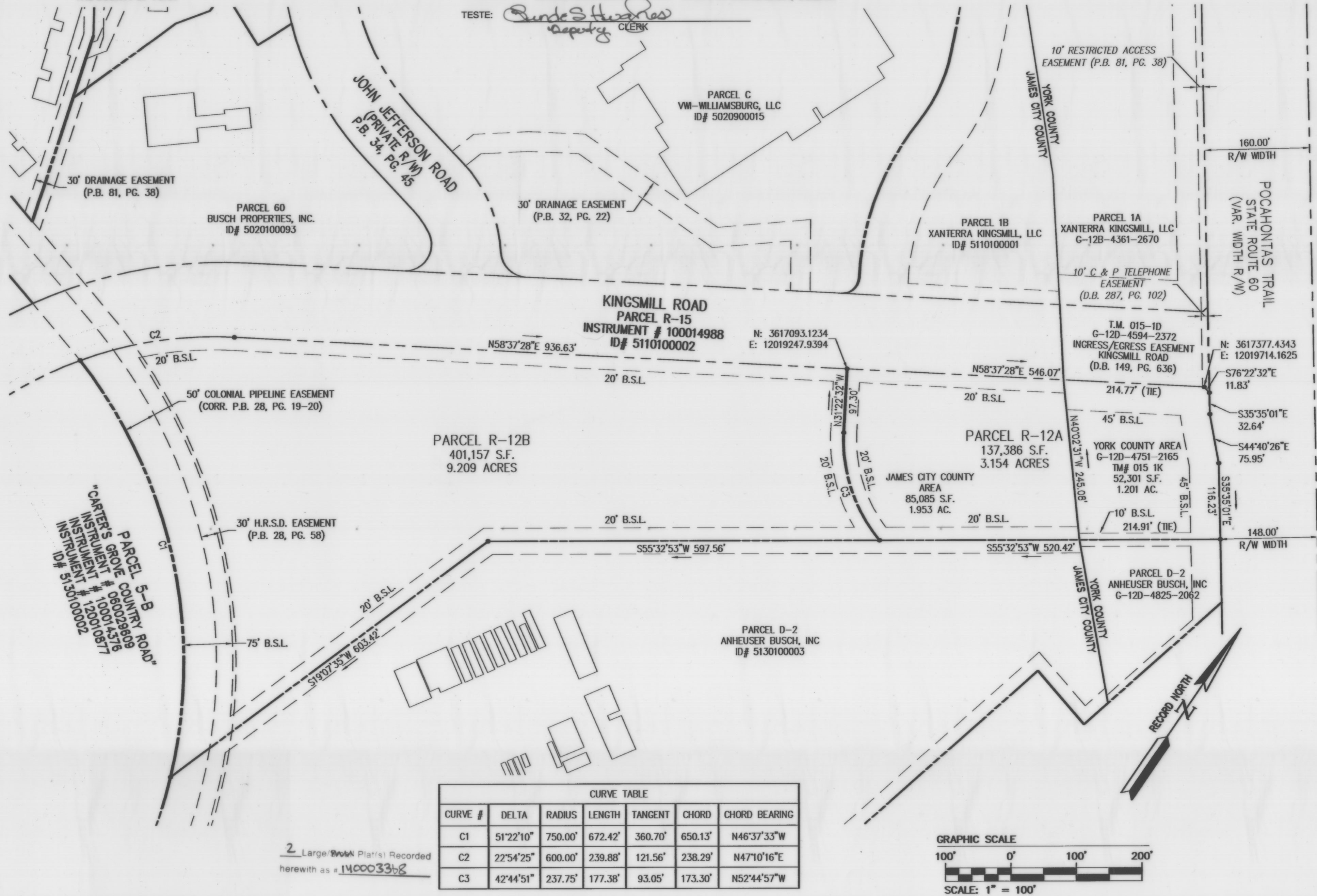


*Al Maddeless* 1/23/14  
 SUBDIVISION AGENT OF THE COUNTY OF YORK DATE

STATE OF VIRGINIA  
 COUNTY OF YORK CIRCUIT COURT. THIS 4<sup>th</sup> DAY OF March, 2014.  
 THE PLAT SHOWN HEREON WAS PRESENTED AND ADMITTED TO THE RECORD AS THE  
 LAW DIRECTS. @ 12:09 AM/PM

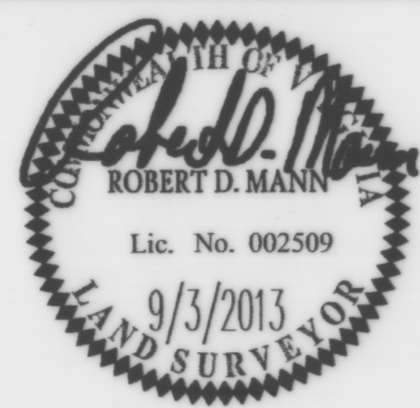
INSTRUMENT # 140003061 LYNN S. MENDIBUR, CLERK

TESTE: *Betsy B. Woolridge*  
 Deputy Clerk



2 Large (1/4" = 100') Plats Recorded  
 herewith as # 1400033b8

City of Williamsburg & County of James City  
 Circuit Court: This PLAT was recorded on  
4 March 2014  
 at 10:31 AM/PM, PB --- PG ---  
 Document # 1400033b8  
 BETSY B. WOOLRIDGE, CLERK  
*Betsy B. Woolridge*, Dep. Clerk



**AES**  
 CONSULTING ENGINEERS  
 1317 Executive Blvd, Suite 150  
 Chesapeake, Virginia 23320  
 Phone: (757) 410-7436  
 www.aesva.com  
 Hampton Roads | Central Virginia | Middle Peninsula

COMPOSITE PLAT OF SUBDIVISION  
 PARCEL R-12  
 BUSCH CORPORATE CENTER  
 PROPERTY OF  
**XANTERRA KINGSMILL, LLC**  
 ROBERTS DISTRICT BRUTON DISTRICT COUNTY OF JAMES CITY COUNTY OF YORK VIRGINIA VIRGINIA

Project Contacts:	RDM
Project Number:	7753-40
Scale:	1"=100'
Date:	01/29/13
Sheet Number	<b>2</b>

Rev.	Date	Description	Revised by
2	9/3/13	REVISED AS PER COMMENT LETTERS	JCA
1	7/11/13	REVISED AS PER COMMENT LETTERS	JCA