

ALTA/ACSM LAND TITLE SURVEY  
SHOWING A PORTION OF  
BUSCH INDUSTRIAL PARK  
KNOWN AS  
126 STAFFORD COURT

BRUTON DISTRICT YORK COUNTY VIRGINIA  
Date: 3/12/14 Scale: 1"=100' Proj. No.: W10312 Proj. Contacts: TCS

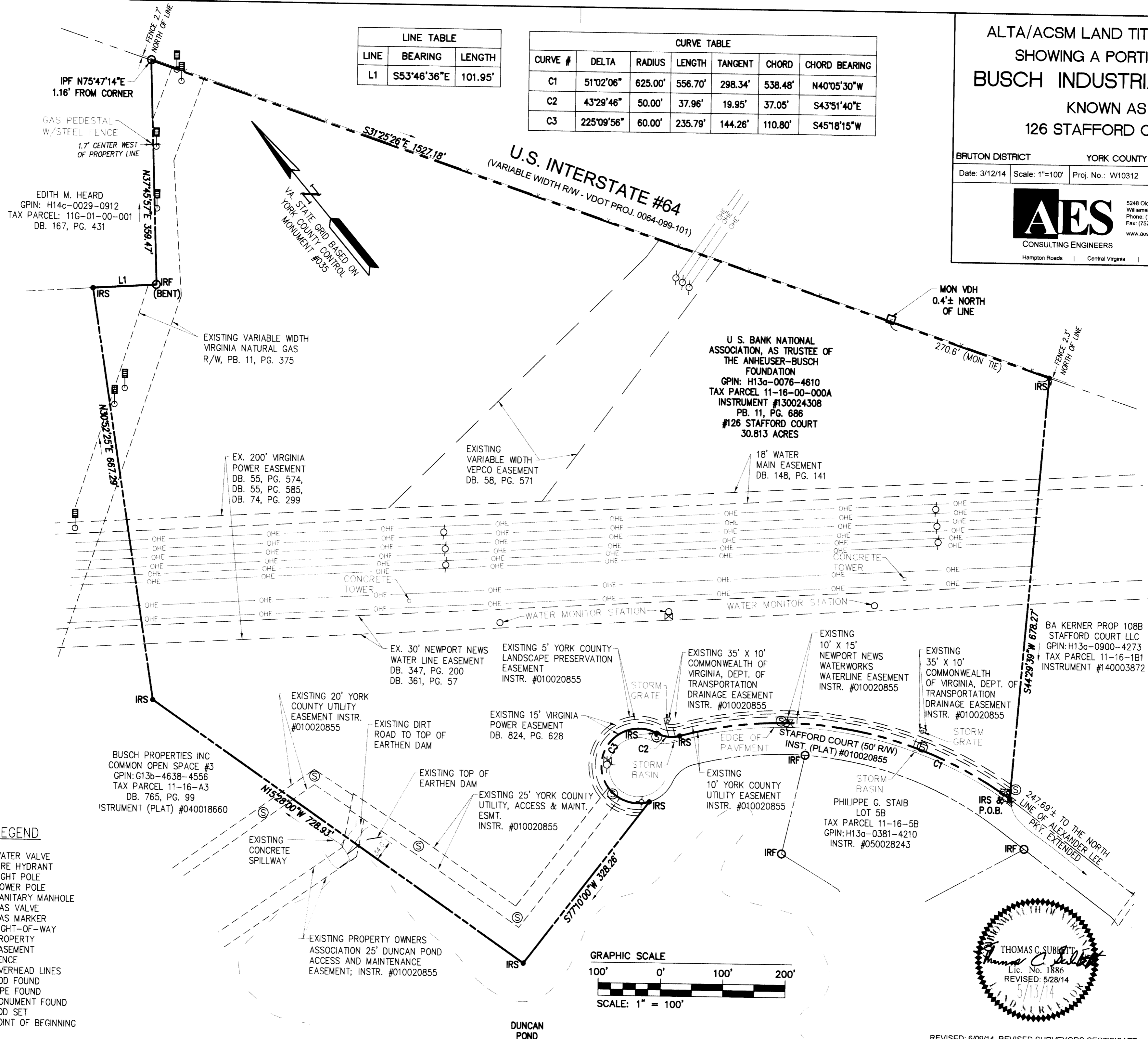


5248 Olde Towne Road, Suite 1  
Williamsburg, Virginia 23188  
Phone: (757) 253-0040  
Fax: (757) 220-8994  
www.aesva.com

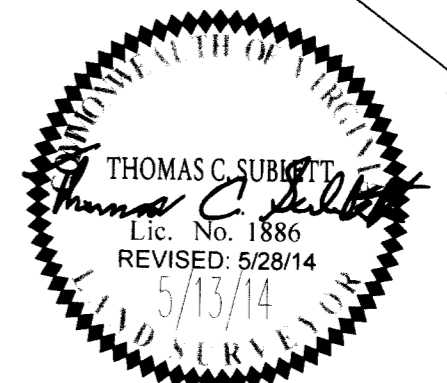
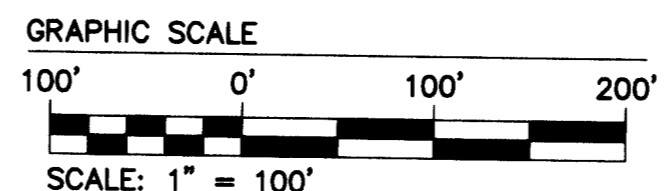
Hampton Roads | Central Virginia | Middle Peninsula

LINE TABLE		
LINE	BEARING	LENGTH
L1	S53°46'36"E	101.95'

CURVE TABLE						
CURVE #	DELTA	RADIUS	LENGTH	TANGENT	CHORD	CHORD BEARING
C1	51°02'06"	625.00'	556.70'	298.34'	538.48'	N40°05'30"W
C2	43°29'46"	50.00'	37.96'	19.95'	37.05'	S43°51'40"E
C3	225°09'56"	60.00'	235.79'	144.26'	110.80'	S45°18'15"W



- LEGEND**
- WATER VALVE
  - FIRE HYDRANT
  - LIGHT POLE
  - POWER POLE
  - SANITARY MANHOLE
  - GAS VALVE
  - GAS MARKER
  - RIGHT-OF-WAY
  - PROPERTY LINE
  - EASEMENT
  - FENCE
  - OVERHEAD LINES
  - ROD FOUND
  - PIPE FOUND
  - MONUMENT FOUND
  - ROD SET
  - P.O.B.



REVISED: 6/09/14 REVISED SURVEYORS CERTIFICATE  
 REVISED: 5/28/14 PER ENDORSEMENT REVISED TITLE REPORT (5/27/14)  
 REVISED: 5/13/14 PER ENDORSEMENT (AMENDED SCHEDULE B-II EXCEPTIONS)

Filed in the Clerk's Office, Circuit Court,  
 York County, Poquoson, VA  
 the 13th day of June, 2014  
 Testes: Lynn S. Melinger, Clerk  
 By: *Thomas C. Subitt*  
 PLAT INSTRUMENT # 140008762