

000267

N/F

BELLFLOWER FOWLER WHITE ETALS

TAX PARCEL 024 36 2

GPIN: R09b-2697-2555

DB 370 PG 223

N/F
HARMON J COXTON ETUX
TAX PARCEL 024 21 1
GPIN R09c-2293-2271
D.B 441 PG 270

N/F
HARMON J COXTON, ETUX
TAX PARCEL: 024 280
GPIN R09d-2670-1783
D B 349 PG 758

SEE DETAIL 'A'

AREA = 1,430 S.F.

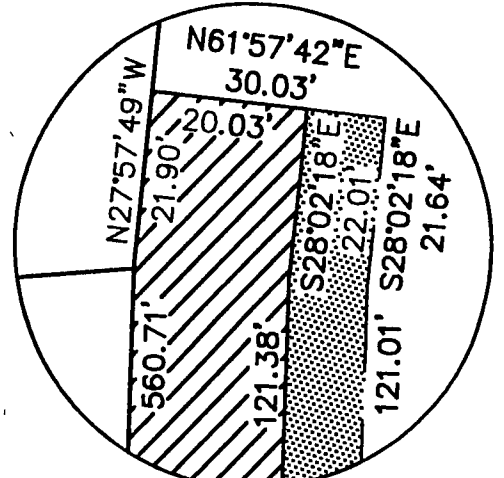
SEE DETAIL 'B'

AREA = 3,863 S.F.

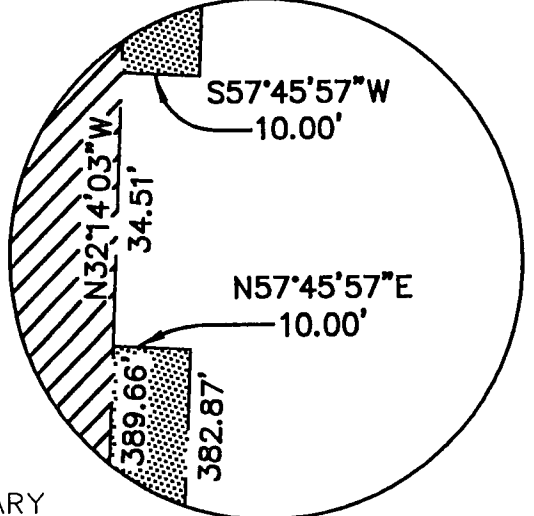
N/F
GARY A. &
TERESA A. MAY, TRS
TAX PARCEL: 024 294
GPIN: R09d-2834-2095
INST. 090021426

S RAYMOND WHITE, ETUX
TAX PARCEL 024 36 1
GPIN R09d-2996-2250
D B 964 PG 418

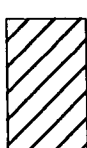
THE VIRGINIA STATE PLANE COORDINATE
SYSTEM 1983 (NAD83), SOUTH ZONE
COUNTY OF YORK, GEODETIC CONTROL NETWORK

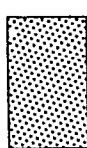


DETAIL 'A'



DETAIL 'B'

 DENOTES 20' PERMANENT UTILITY EASEMENT HEREBY CONVEYED TO THE COUNTY OF YORK. AREA = 11,503 SQ. FT.

 DENOTES 10' TEMPORARY CONSTRUCTION EASEMENT HEREBY CONVEYED TO THE COUNTY OF YORK. AREA = 5,293 SQ. FT.

NOTES:
THE PROPERTY DELINEATED ON THIS PLAT IS LOCATED AT 417 OLD WORMLEY CREEK ROAD AND COUNTY OF YORK TAX ASSESSMENT MAP NO. 024 294 AND IS CURRENTLY ZONED RR.

THIS PLAT WAS PREPARED WITHOUT THE BENEFIT OF A TITLE REPORT. THEREFORE, ALL ENCUMBRANCES TO THE PROPERTY ARE NOT NECESSARILY SHOWN HEREON.

THE BOUNDARY INFORMATION SHOWN ON THIS PLAT WAS COMPILED FROM EXISTING LAND RECORDS AND CURRENT FIELD MEASUREMENTS AND REPRESENTS AN ACTUAL FIELD SURVEY. THIS PLAT DOES NOT REPRESENT A BOUNDARY SURVEY.

HORIZONTAL COORDINATE INFORMATION IS BASED ON THE VIRGINIA STATE PLANE COORDINATE SYSTEM SOUTH ZONE (NAD 83), UNITS ARE IN SURVEY FEET. COUNTY OF YORK GEODETIC CONTROL NETWORK STATIONS 58 AND 66 USED FOR THIS PROJECT.



PLAT OF EASEMENT
FROM
GARY A &
TERESA A. MAY,
TRUSTEES


TO

COUNTY OF YORK

OLD WORMLEY CREEK
GRAVITY SEWER PROJECT



DATE: 06-18-2012 SCALE: 1" = 100'

 Engineers, Surveyors
Construction Managers
716 J. Clyde Morris Boulevard, Suite A
Newport News, Virginia 23601
757. 596 . 4005
NXL J.O.: 10-11-040L