

PLAT OF SUBDIVISION
BUSCH INDUSTRIAL PARK
PHASE II
CREATING LOT 3 AND LOT 4

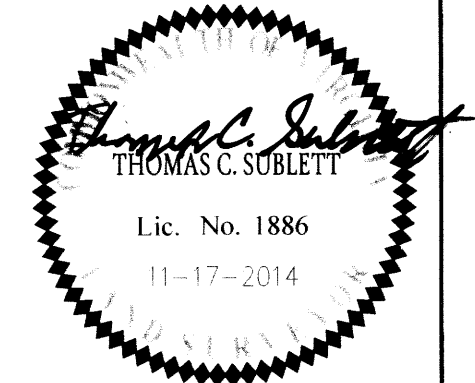
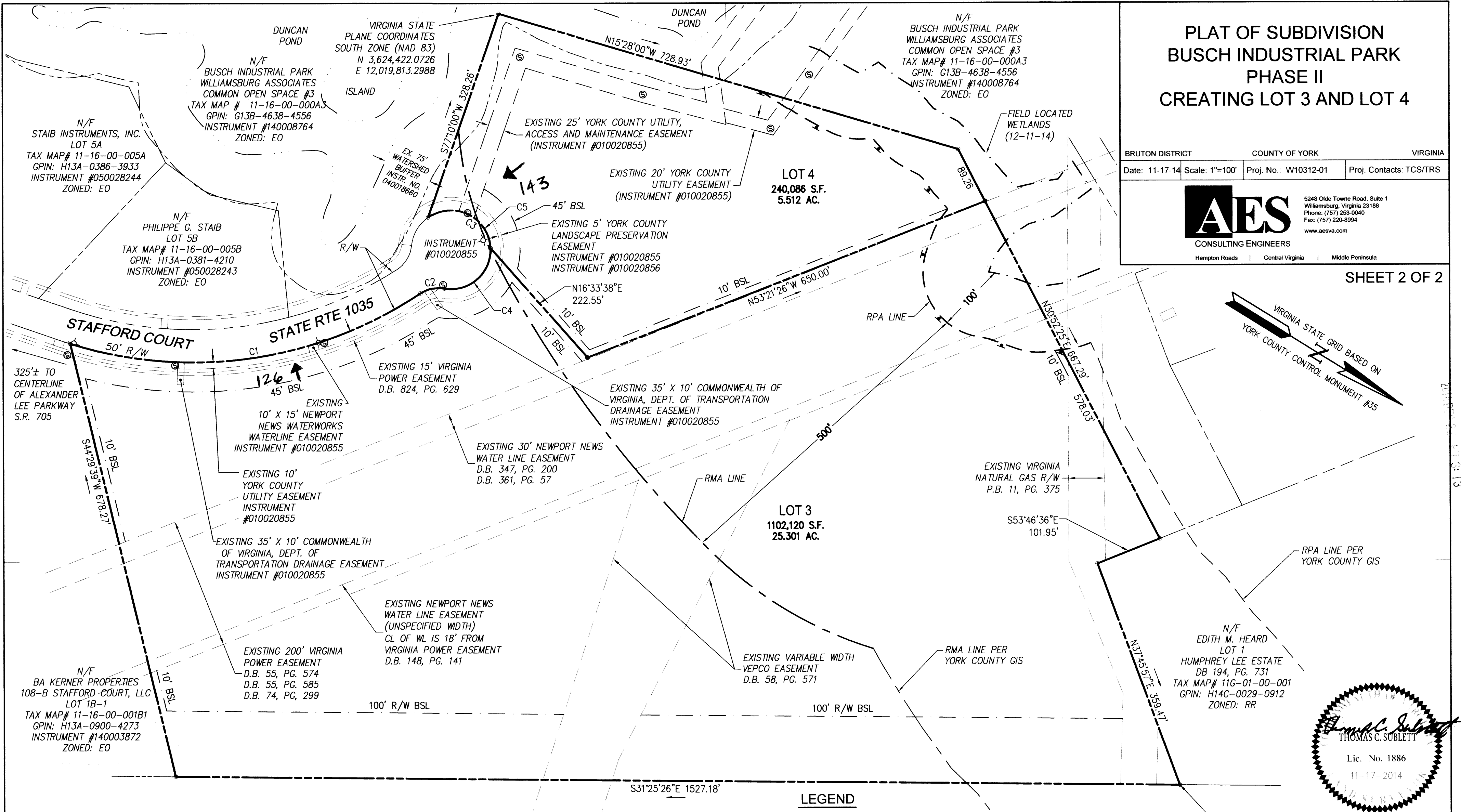
BRUTON DISTRICT COUNTY OF YORK VIRGINIA
Date: 11-17-14 Scale: 1"=100' Proj. No.: W10312-01 Proj. Contacts: TCS/TRS



5248 Olde Towne Road, Suite 1
Williamsburg, Virginia 23188
Phone: (757) 253-0040
Fax: (757) 220-8994
www.aesva.com

Hampton Roads | Central Virginia | Middle Peninsula

SHEET 2 OF 2



LEGEND

- PROPERTY LINE
- - - EASEMENT
- R/W MONUMENT SET
- CMF CONCRETE MONUMENT FOUND
- IR IRON ROD
- IRS IRON ROD SET
- IRF IRON ROD FOUND
- RPA RESOURCE PROTECTION AREA
- RMA RESOURCE MANAGEMENT AREA
- ▼ SIGN FOR ENVIRONMENTALLY SENSITIVE AREA
- R/W RIGHT-OF-WAY
- ∅ PP POWER POLE
- N/F NOW / FORMERLY
- FIRE HYDRANT
- ⊙ SANITARY MANHOLE

APPROVED:
YORK COUNTY BOARD OF SUPERVISORS
BY: *Al Maddalena*, PLAT APPROVING AGENT

DATE: *12/22/14*

STATE OF VIRGINIA
COUNTY OF YORK
IN THE CLERK'S OFFICE OF THE CIRCUIT COURT FOR THE COUNTY OF YORK—POQUOSON THE *22nd* DAY OF *December*, 2014.
THIS PLAT WAS PRESENTED AND ADMITTED TO RECORD AS THE LAW DIRECTS AS INSTRUMENT NO. *LR140021061*

TESTE: *Kristen N. Nelson*, CLERK
BY: *Jose Progen, D.C.*

AES CONSULTING ENGINEERS

CURVE TABLE						
CURVE #	DELTA	RADIUS	LENGTH	TANGENT	CHORD	CHORD BEARING
C1	51°02'06"	625.00'	556.70'	298.34'	538.48'	N40°05'30"W
C2	43°29'46"	50.00'	37.96'	19.95'	37.05'	N43°51'40"W
C3	225°09'56"	60.00'	235.79'	—	110.80'	S45°18'15"W
C4	102°04'33"	60.00'	106.89'	74.19'	93.31'	N73°09'04"W
C5	123°05'23"	60.00'	128.90'	110.71'	105.50'	S5°44'02"E

