

NEW PARCEL ONE
 N. or F. COMMONWEALTH GREEN, LLLP
 INSTRUMENT #130005619
 INSTRUMENT #130005292 (PLAT)
 GPIN #S02A-2195-3879
 TAX MAP #36-01-00-000A
 ZONED: PDMU
 (#501 COMMONWEALTH DRIVE)

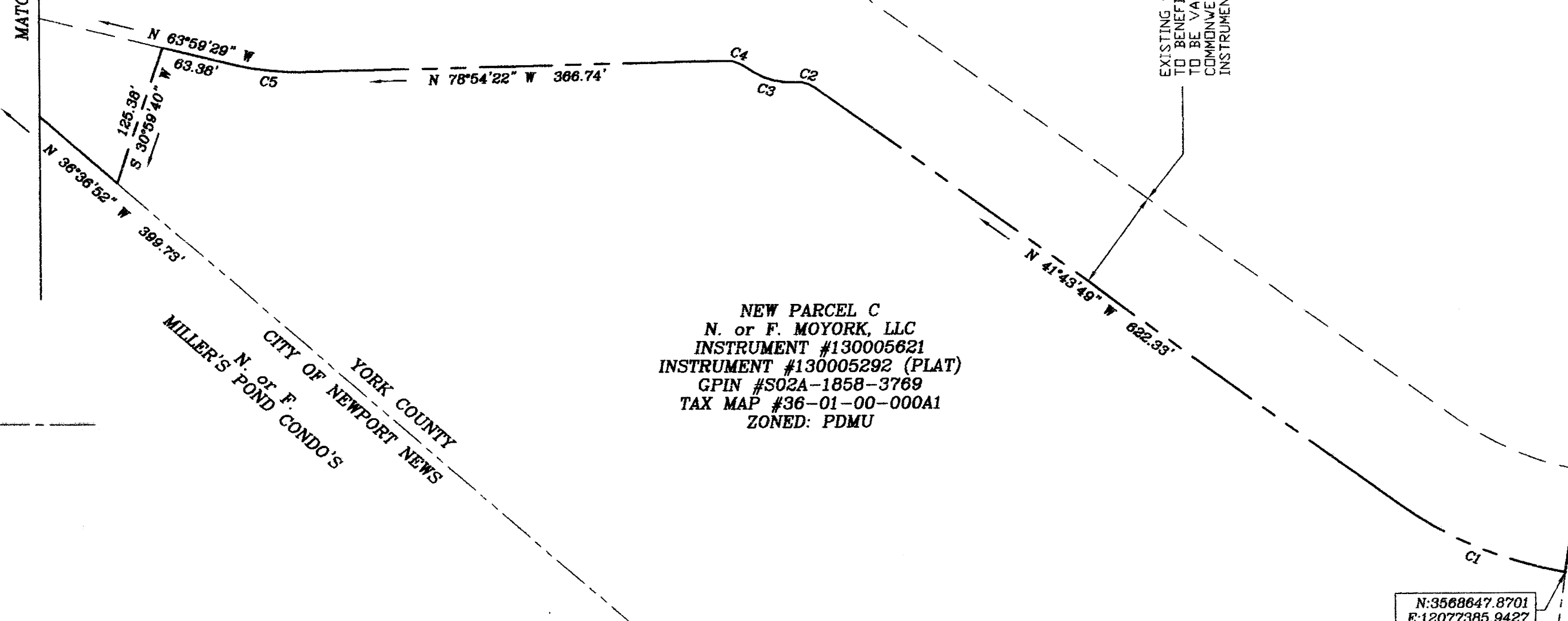
ORIGINAL PARCEL AREA
 1,377,791 SQ. FT.
 31.6297 ACRES

NEW PARCEL AREA
 1,379,908 SQ. FT.
 31.6783 ACRES

CURVE	DELTA ANGLE	RADIUS	ARC LENGTH	TANGENT	CHORD LENGTH	CHORD BEARING
C1	28°04'19"	355.00'	161.54'	82.19'	160.15'	N 54°45'59" W
C2	39°19'57"	25.00'	17.16'	8.93'	16.83'	S 61°23'48" E
C3	41°29'21"	65.50'	47.43'	24.81'	46.40'	N 60°19'06" W
C4	39°19'57"	25.00'	17.16'	8.93'	16.83'	S 59°14'24" E
C5	14°54'53"	245.00'	63.78'	32.07'	63.60'	N 71°26'58" W

EXISTING 90° INGRESS/EGRESS, DRAINAGE & UTILITY EASEMENT TO BENEFIT NEW PARCEL ONE AND NEW PARCEL C TO BE VACATED UPON EXTENSION OF COMMONWEALTH DRIVE INSTRUMENT #130005292

MATCH LINE SEE SHEET 3



NEW PARCEL C
 N. or F. MOYORK, LLC
 INSTRUMENT #130005621
 INSTRUMENT #130005292 (PLAT)
 GPIN #S02A-1858-3769
 TAX MAP #36-01-00-000A1
 ZONED: PDMU

COMPILED PLAT SHOWING BOUNDARY LINE ADJUSTMENT BETWEEN THE PROPERTIES OF JEANETTE J. KEENER, TRUSTEE OF THE FAMILY TRUST AND COMMONWEALTH GREEN, LLLP
 BETHEL DISTRICT, YORK COUNTY, VIRGINIA
 MAY 2, 2014, REVISED SEPTEMBER 8, 2014

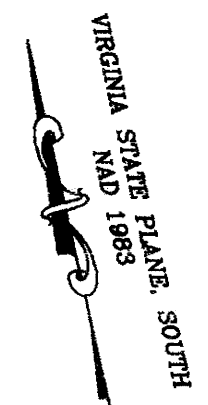
ADPA **A.D. POTTS & ASSOCIATES, INC.**
 11524 JEFFERSON AVENUE
 NEWPORT NEWS, VIRGINIA 23601
 PHONE: (757) 595-4610



SCALE: 1"=100'
 SHEET 3 OF 3

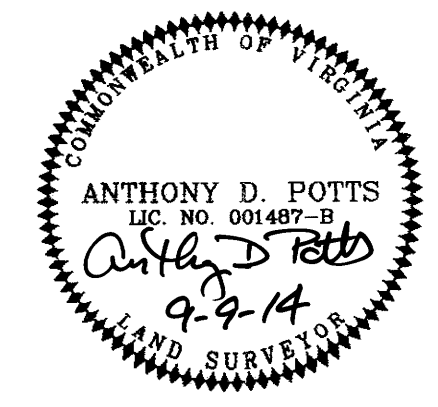
N or F.
 H. J. COXTON, JR. et ux
 GPIN #050008932
 TAX MAP #S02B-3096-4278
 ZONED: EO

N. or F. DALE L. CUPP
 D.B. 307 PG. 339
 GPIN #S02B-2708-3666
 TAX MAP #36-00-00-020
 ZONED: EO



N:3568647.8701
 E:12077385.9427

APPROVED
 YORK COUNTY BOARD OF SUPERVISORS
 BY: U. Maddalena
 PLAT APPROVING AGENT
 DATE: 12/22/14



STATE OF VIRGINIA
 COUNTY OF YORK
 IN THE CLERK'S OFFICE OF THE CIRCUIT COURT
 FOR THE COUNTY OF YORK-POQUOSON, ON
 THIS 29th DAY OF Dec., 20 14
 THIS MAP WAS PRESENTED AND ADMITTED TO RECORD
 AS THE LAW DIRECTS, AS INSTRUMENT
 NUMBER 140021262
 TESTE: Kristen N Nelson
 CLERK
 BY: Wendy Hoff
 DEPUTY CLERK