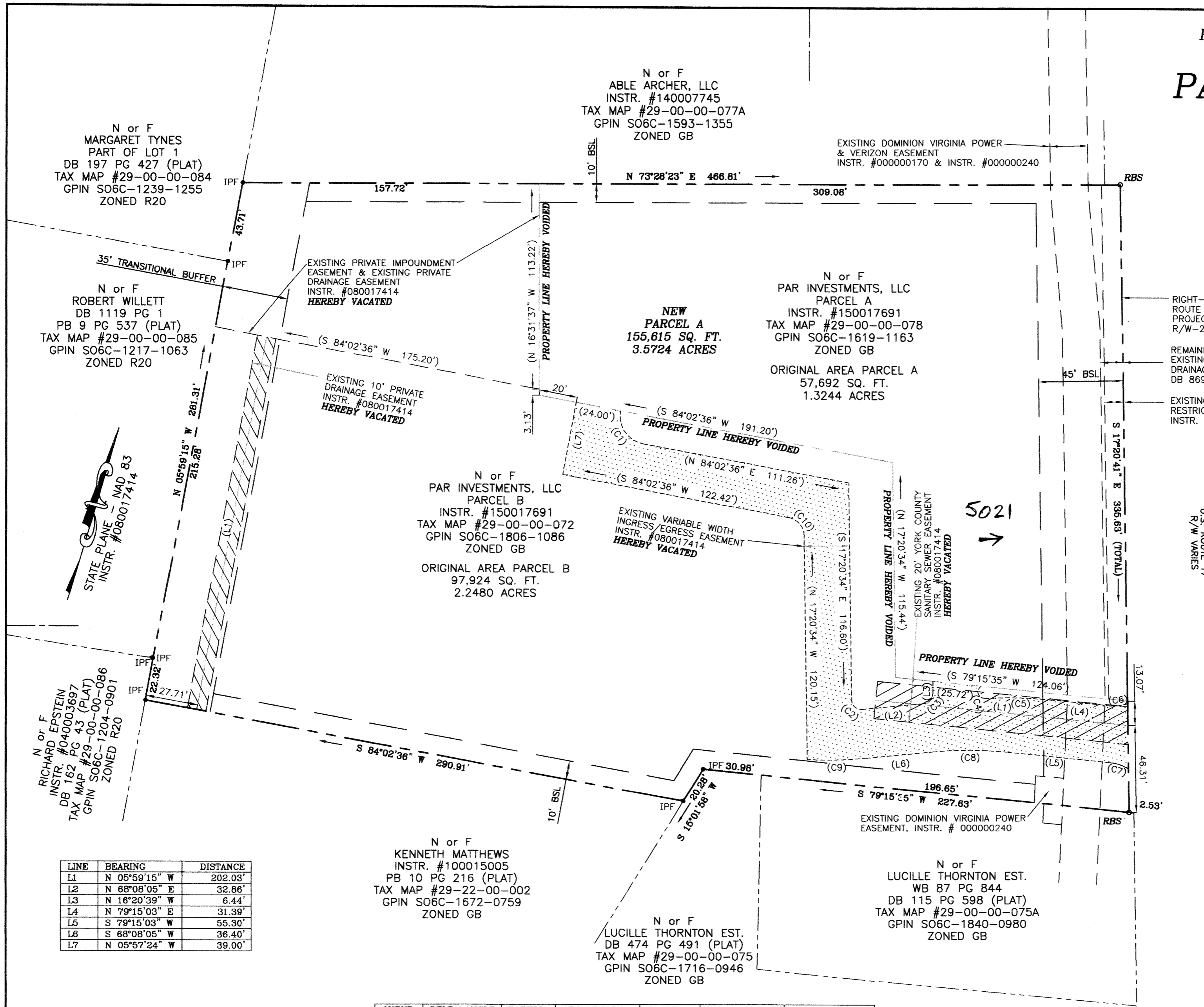


PROPERTY LINE AND EASEMENT VACATIONS
ON THE PROPERTIES OF
PAR INVESTMENTS, LLC
GRAFTON DISTRICT
YORK COUNTY, VIRGINIA

ADPA **A.D. POTTS & ASSOCIATES, INC.**
11524 JEFFERSON AVENUE
NEWPORT NEWS, VIRGINIA 23601
PHONE: (757) 595-4610
1" = 40' DECEMBER 21, 2015
SHEET 2 OF 2



RIGHT-OF-WAY LINE PER
ROUTE 17 STATE HIGHWAY
PROJECT #6017-099-129,
R/W-201, C-501, SHEETS 16 & 17

REMAINDER OF AN
EXISTING 20' YORK COUNTY
DRAINAGE & UTILITY EASEMENT
DB 869 PG 16

EXISTING 10' YORK COUNTY
RESTRICTED ACCESS EASEMENT
INSTR. #080017414

GEORGE WASHINGTON MEMORIAL HIGHWAY
U.S. ROUTE 17
R/W VARIES

LINE	BEARING	DISTANCE
L1	N 05°59'15" W	202.03'
L2	N 68°08'05" E	32.86'
L3	N 16°20'39" W	6.44'
L4	N 79°15'03" E	31.39'
L5	S 79°15'03" W	55.30'
L6	S 68°08'05" W	36.40'
L7	N 05°57'24" W	39.00'

CURVE	DELTA ANGLE	RADIUS	ARC LENGTH	TANGENT	CHORD LENGTH	CHORD BEARING
C1	90°00'00"	15.00'	23.56'	15.00'	21.21'	N 50°57'24" W
C2	94°31'21"	5.00'	8.25'	5.41'	7.34'	N 64°36'15" W
C3	84°28'44"	5.50'	8.11'	4.99'	7.39'	S 25°53'43" W
C4	150°16'54"	3.50'	9.18'	13.19'	6.77'	N 34°24'12" W
C5	08°47'42"	230.00'	35.31'	17.69'	35.27'	N 74°51'12" E
C6	27°30'52"	20.00'	9.60'	4.90'	9.51'	S 65°29'37" W
C7	23°41'54"	25.00'	10.34'	5.25'	10.27'	S 88°54'00" E
C8	11°06'58"	200.00'	38.80'	19.46'	38.74'	N 73°41'34" E
C9	07°58'48"	223.04'	31.06'	15.56'	31.04'	S 71°49'39" W
C10	78°36'50"	10.00'	13.72'	8.19'	12.67'	S 56°38'59" E

APPROVED
YORK COUNTY BOARD OF SUPERVISORS
BY: [Signature]
PLAT APPROVING AGENT
DATE: 1/4/16

STATE OF VIRGINIA
COUNTY OF YORK
IN THE CLERK'S OFFICE OF THE CIRCUIT COURT
FOR THE COUNTY OF YORK-POQUOSON, ON
THIS 6th DAY OF January, 2016.
THIS MAP WAS PRESENTED AND ADMITTED TO RECORD
AS THE LAW DIRECTS, AS INSTRUMENT
NUMBER 160000224 8:21 AM
TESTE: Kristen N. Nelson
CLERK
BY: [Signature] DEPUTY CLERK

