

BASIS: D.B.330 PG.436 (PLAT)

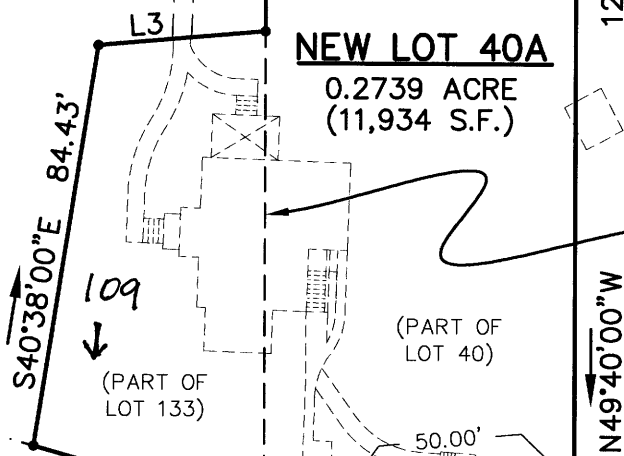
READ STREET - S.R. 1004
16.5' R/W

4' PEDESTRIAN EASEMENT
INST. #010006056
D.B.181 PG.682 (PLAT)

N/F U.S. PARK SERVICE
TAX MAP: 18A-01-00-132
GPIN: P12d-3140-0565
D.B.175 PG.377

N/F G-SQUARE, INC.
TAX MAP: 18A-01-00-130
GPIN: P12d-3237-0683
D.B.240 PG.373

LINE DATA TABLE		
LINE	BEARING	DISTANCE
L1	N35°20'00"E	65.00'
L2	N56°05'00"E	50.00'
L3	S35°20'00"W	35.00'
L4	S49°40'00"E	25.00'
L5	S35°20'00"W	65.00'



N/F GRACE EPISCOPAL CHURCH
TAX MAP: 18A-01-00-040A
GPIN: P12d-3050-0575

PORTION OF PROPERTY
LINE HEREBY VOIDED
(S49°40'00"E, 100.00')

N/F GRACE EPISCOPAL CHURCH
TAX MAP: 18A-01-00-040B
GPIN: P12d-2995-0619

N/F BEVERLY C. KRAMS
TAX MAP: 18A-03-00-000A
GPIN: P12d-3021-0810
W.B.86 PG.8

N/F GRACE EPISCOPAL CHURCH
TAX MAP: 18A-01-00-034B
GPIN: P12d-3037-0680

N/F GRACE EPISCOPAL CHURCH
TAX MAP: 18A-01-00-034
GPIN: P12d-2957-0683

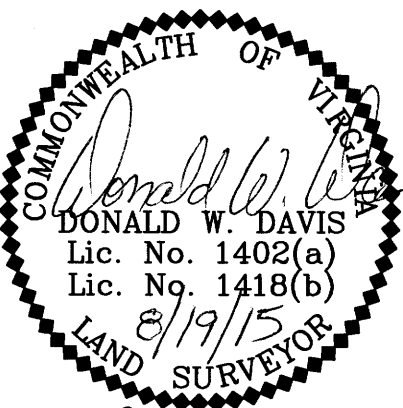
N/F BEVERLY C. KRAMS
TAX MAP: 18A-03-00-00A2
GPIN: P12d-3063-0744
W.B.86 PG.8

N/F BEVERLY C. KRAMS
TAX MAP: 18A-01-00-034A
GPIN: P12d-3009-0746
W.B.86 PG.8

EASEMENT FOR INGRESS AND EGRESS OVER, ACROSS AND UPON 15' ALLEY
INST. #010006056, D.B.238 PG.287, INST. #040021304

CHURCH STREET
S.R. 1003
33' R/W

YORK COUNTY
APPROVED FOR RECORDATION
BY: *A. Maddalena*
CHIEF OF DEVELOPMENT & COMPLIANCE
DATE: 3/30/16



REFERENCES

- INST. #010006056
- D.B.330 PG.433 (W/ PLAT)
- D.B.238 PG.287 (W/ PLAT)
- INST. #040021304
- D.B.181 PG.682 (PLAT)
- D.B.44 PG.518 (PLAT)

SYMBOLS :

- PIPE FOUND
- IRON ROD SET
- IRON ROD FOUND
- CONC. MONUMENT

I, *Donald W. Davis*
HEREBY CERTIFY THAT THE SURVEY REPRESENTED BY THIS PLAT WAS MADE BY ME ON THIS DATE AND IS CORRECT TO THE BEST OF MY KNOWLEDGE AND BELIEF. THERE ARE NO ENCROACHMENTS OF BUILDINGS UNLESS SHOWN HEREON.

DAVIS & ASSOCIATES, P.C.
SURVEYORS - PLANNERS
YORK COUNTY, VIRGINIA

JOB LOCATION: #109 & #109A CHURCH STREET - S.R.1003

Filed in the Clerk's Office, Circuit Court,
York County - Poquoson, VA
the 31st day of March, 2016
Teste: Kriston N. Nelson, Clerk 8:52 AM
By: *Talerie Lynn Patton D.C.*

Plat instr # 160005099

PROPERTY LINE VACATION PLAT
NEW LOT 40A
PART OF LOT 133 & PART OF LOT 40
"THE COMMONS"
NELSON MAGISTERIAL DISTRICT
COUNTY OF YORK, VIRGINIA
INST. #010006056