

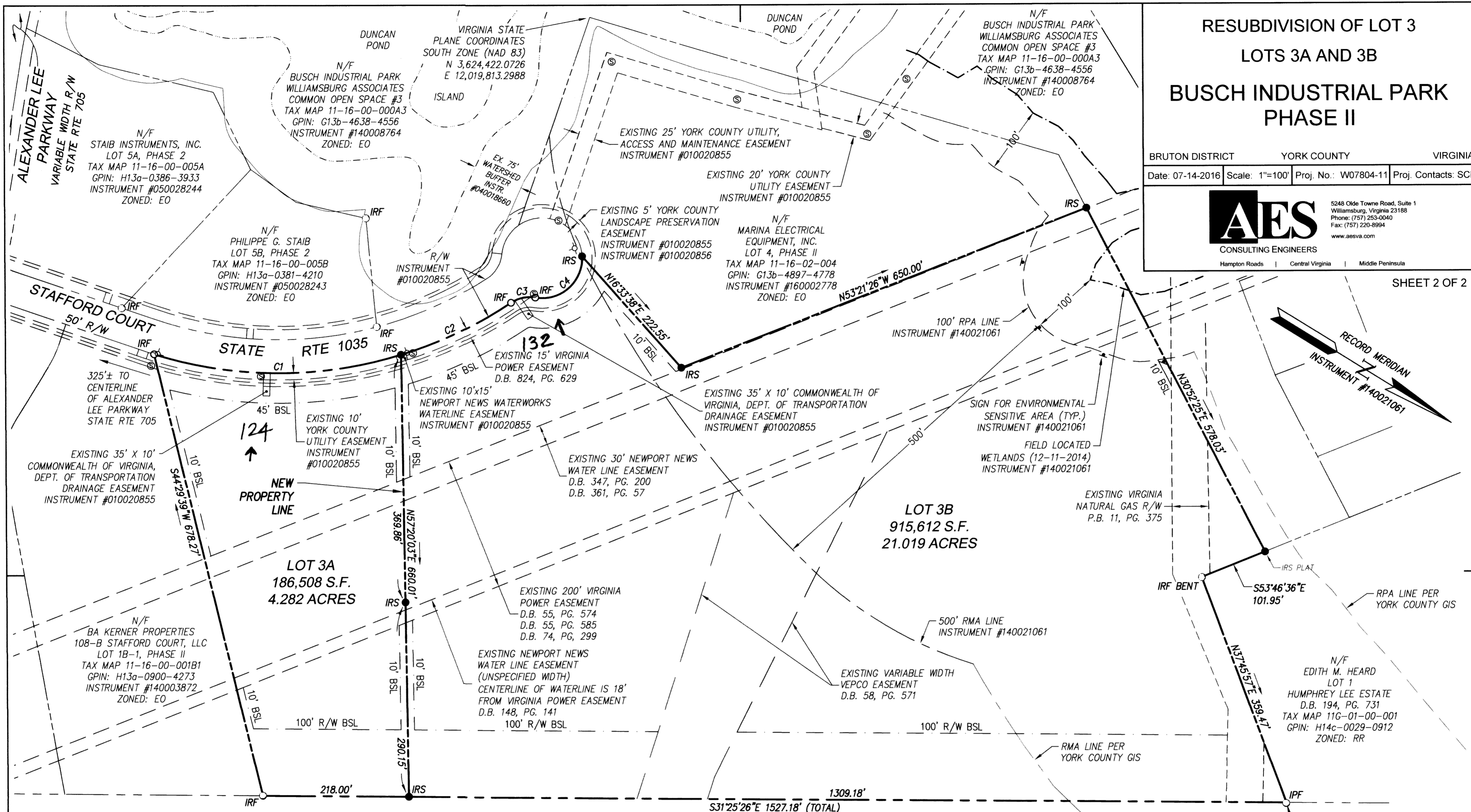
RESUBDIVISION OF LOT 3
 LOTS 3A AND 3B
**BUSCH INDUSTRIAL PARK
 PHASE II**

BRUTON DISTRICT YORK COUNTY VIRGINIA
 Date: 07-14-2016 Scale: 1"=100' Proj. No.: W07804-11 Proj. Contacts: SCL



5248 Olde Towne Road, Suite 1
 Williamsburg, Virginia 23188
 Phone: (757) 253-0040
 Fax: (757) 220-8994
 www.aesva.com

SHEET 2 OF 2

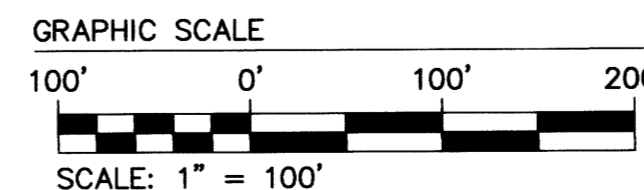


U.S. INTERSTATE 64
 VARIABLE WIDTH R / W

LEGEND

- PROPERTY LINE
- RIGHT-OF-WAY LINE
- EASEMENT
- VDOT SIGHT EASEMENT
- IPF
- IRF
- RIGHT-OF-WAY POINT
- IRS
- +--- CENTERLINE RAILROAD TRACK
- BSL
- N/F
- R/W
- Fire Hydrant
- Sanitary Manhole

CURVE TABLE						
CURVE #	DELTA	RADIUS	LENGTH	TANGENT	CHORD	CHORD BEARING
C1	34°18'47"	625.00'	374.30'	192.95'	368.73'	N31°43'51"W
C2	16°43'19"	625.00'	182.41'	91.86'	181.76'	N57°14'53"W
C3	43°29'46"	50.00'	37.96'	19.95'	37.05'	N43°51'40"W
C4	102°04'33"	60.00'	106.89'	74.19'	93.31'	N73°09'04"W



APPROVED:
 YORK COUNTY BOARD OF SUPERVISORS
 BY: *[Signature]* PLAT APPROVING AGENT
 DATE: **NOVEMBER 18, 2016**

STATE OF VIRGINIA
 COUNTY OF YORK
 IN THE CLERK'S OFFICE OF THE CIRCUIT COURT FOR THE COUNTY
 OF YORK-POQUOSON, THE 18th DAY OF November, 2016.
 THIS MAP WAS PRESENTED AND ADMITTED TO RECORD AS THE LAW
 DIRECTS, AS INSTRUMENT NO. 160821226 2:31 pm
 TESTE: **KRISTEN N. NELSON, CLERK** CLERK
 BY: *[Signature]*
 AES CONSULTING ENGINEERS