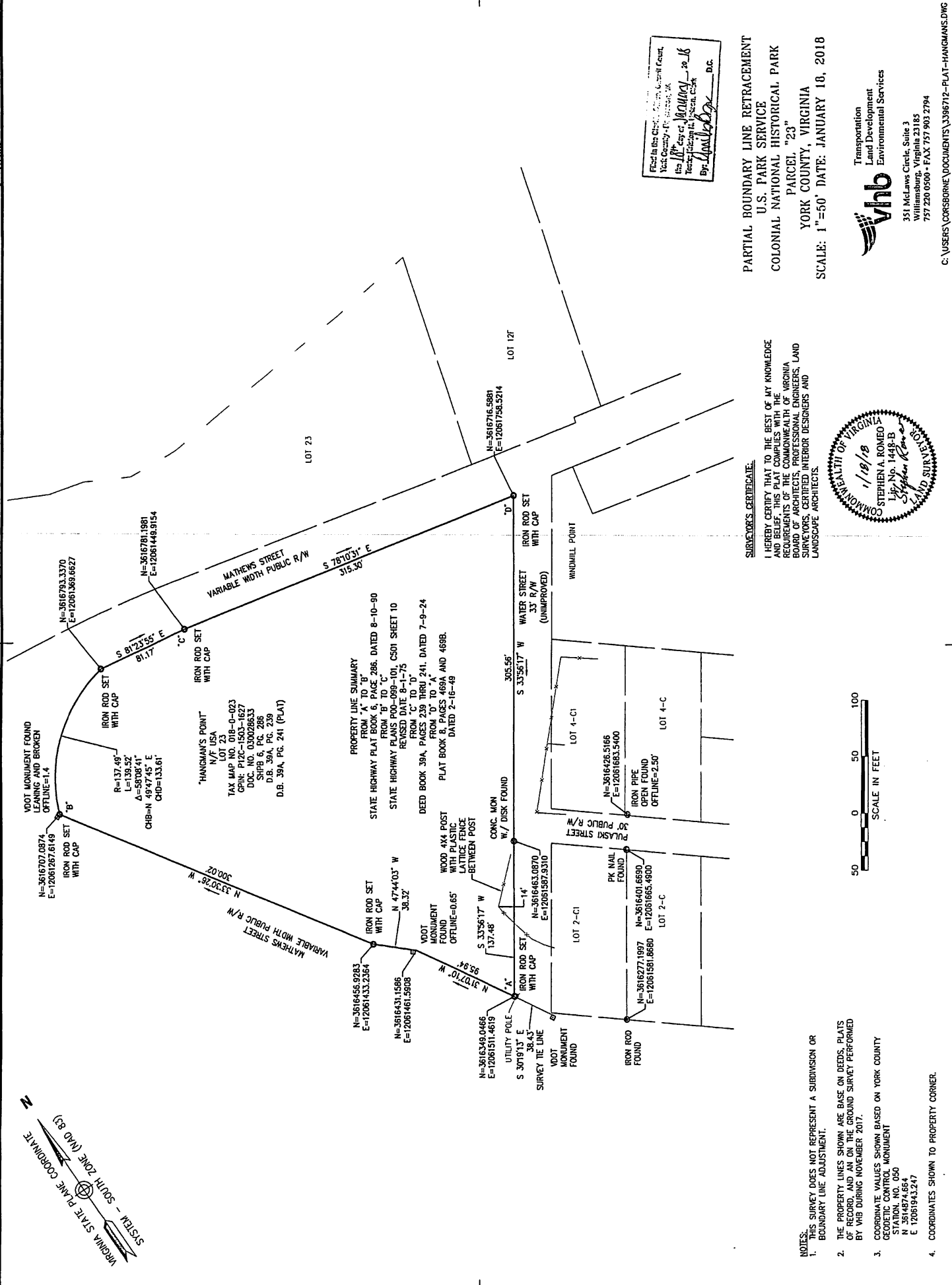
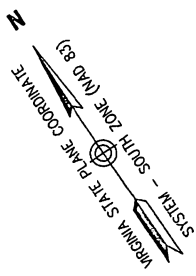


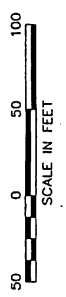
170081112



Filed in the Office of the Clerk of the Circuit Court,  
 York County, Virginia, on 11/18/18  
 This Plat is a true and correct copy of the original as shown to me by the Surveyor.  
 By: *[Signature]* D.C.

**PARTIAL BOUNDARY LINE RETRACEMENT**  
**U.S. PARK SERVICE**  
**COLONIAL NATIONAL HISTORICAL PARK**  
**PARCEL "23"**  
**YORK COUNTY, VIRGINIA**  
**SCALE: 1"=50'** DATE: JANUARY 10, 2018

**SURVEYOR'S CERTIFICATE:**  
 I HEREBY CERTIFY THAT TO THE BEST OF MY KNOWLEDGE AND BELIEF, THIS PLAT COMPLIES WITH THE REQUIREMENTS OF THE COMMONWEALTH OF VIRGINIA BOARD OF ARCHITECTS, PROFESSIONAL ENGINEERS, LAND SURVEYORS, CERTIFIED INTERIOR DESIGNERS AND LANDSCAPE ARCHITECTS.



- NOTES:**
- THIS SURVEY DOES NOT REPRESENT A SUBDIVISION OR BOUNDARY LINE ADJUSTMENT.
  - THE PROPERTY LINES SHOWN ARE BASED ON REDDS, PLATS OF RECORD, AND AN ON THE GROUND SURVEY PERFORMED BY VHB DURING NOVEMBER 2017.
  - COORDINATE VALUES SHOWN BASED ON YORK COUNTY GEODETIC CONTROL MONUMENT  
 N 3016456.426  
 E 12061943.247
  - COORDINATES SHOWN TO PROPERTY CORNER.

**Vhb**  
 Transportation  
 Land Development  
 Environmental Services  
 351 McLaws Circle, Suite 103  
 Williamsburg, Virginia 23185  
 757.226.0300 • FAX 757.903.2794