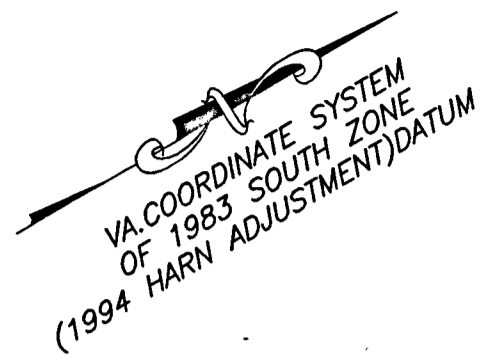
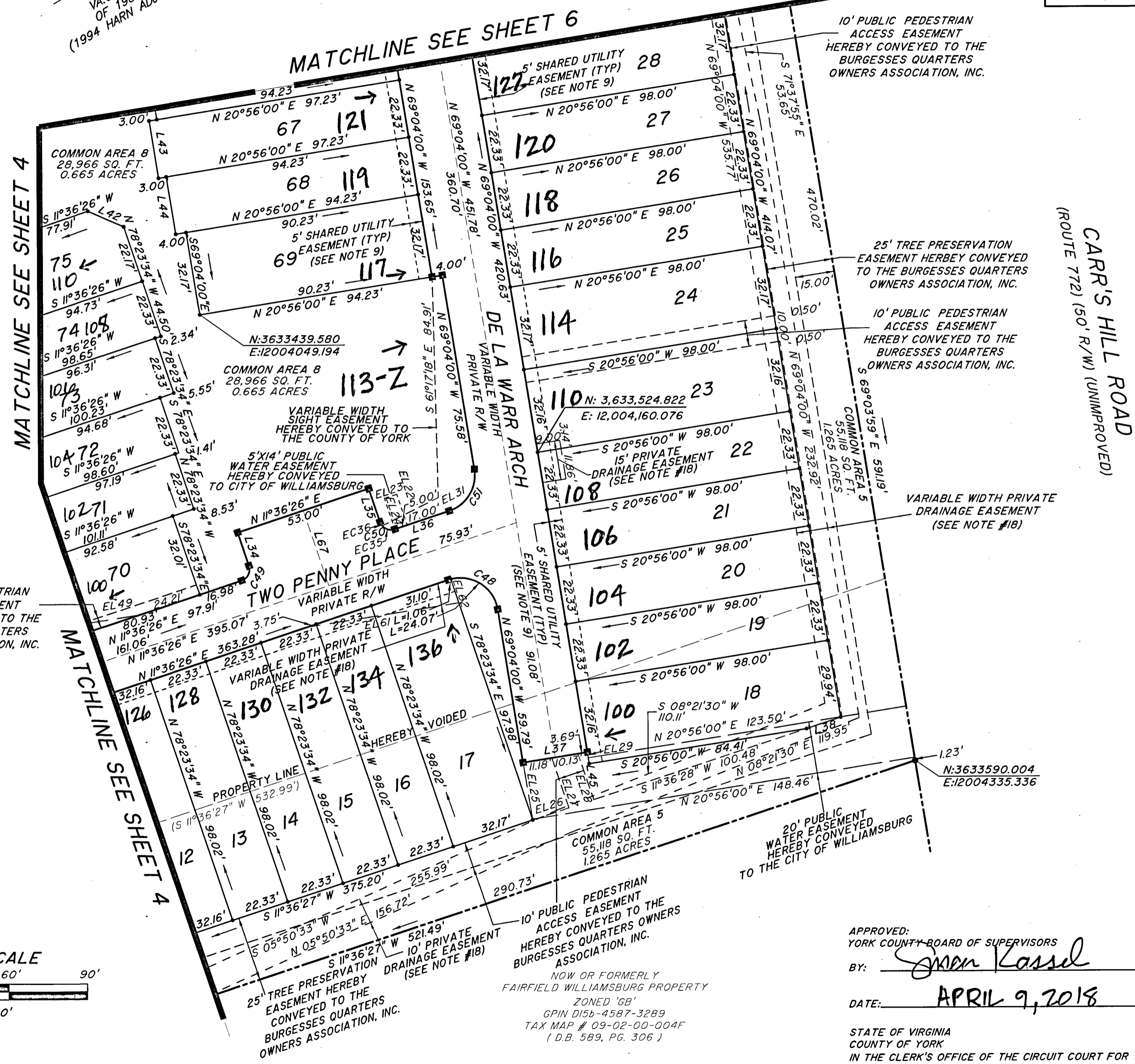
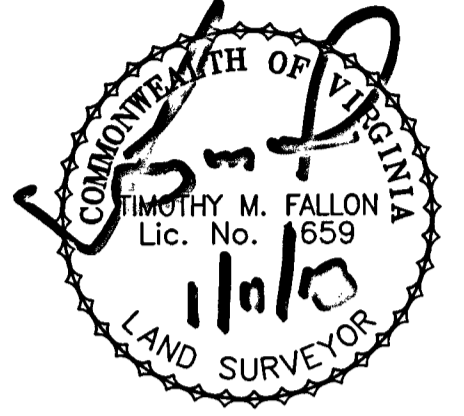


NOTE:
PRIVATE RIGHT OF WAY SHALL BE THE
LIMITS OF CITY OF WILLIAMSBURG WATER
MAIN EASEMENT AND YORK COUNTY
SANITARY SEWER MAIN EASEMENT
UNLESS OTHERWISE NOTED.

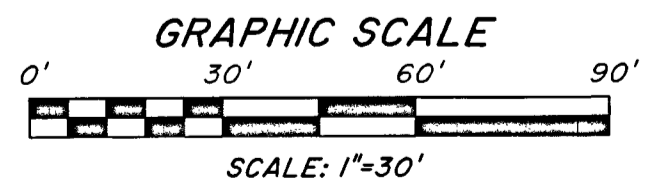


HASSELL & FOLKES, P.C. ENGINEERS-SURVEYORS-PLANNERS 325 VOLVO PARKWAY CHESAPEAKE, VIRGINIA 23320 PHONE: (757) 547-9531 FAX: (757) 547-9481 www.hfpc-online.com		
SUBDIVISION OF BURGESSES QUARTERS		BRUTON DISTRICT
SCALE: 1"=30'		DATE 12/19/17
SHEET 5 OF 8		YORK COUNTY, VIRGINIA



CARR'S HILL ROAD
(ROUTE 72) (50' R/W) (UNIMPROVED)

- LEGEND
- DENOTES CONCRETE MONUMENT SET
 - DENOTES IRON ROD SET
 - DENOTES EASEMENT LINE
 - DENOTES BOUNDARY LINE
 - DENOTES LOT LINE



APPROVED:
YORK COUNTY BOARD OF SUPERVISORS
BY: Janet Kassel PLAT APPROVING AGENT
DATE: APRIL 9, 2018

STATE OF VIRGINIA
COUNTY OF YORK
IN THE CLERK'S OFFICE OF THE CIRCUIT COURT FOR THE COUNTY OF YORK-POQUOSON THE 9th DAY OF April 2018,
THIS MAP WAS PRESENTED AND ADMITTED TO RECORD AS THE LAW DIRECTS, AS INSTRUMENT NO. 180006296
TESTE: Kristen N. Nelson CLERK
BY: Andrew Phillip Delo

SEE SHEET 8 OF 8 FOR CURVE AND LINE TABLES