

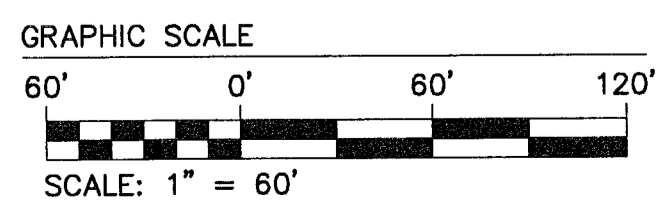
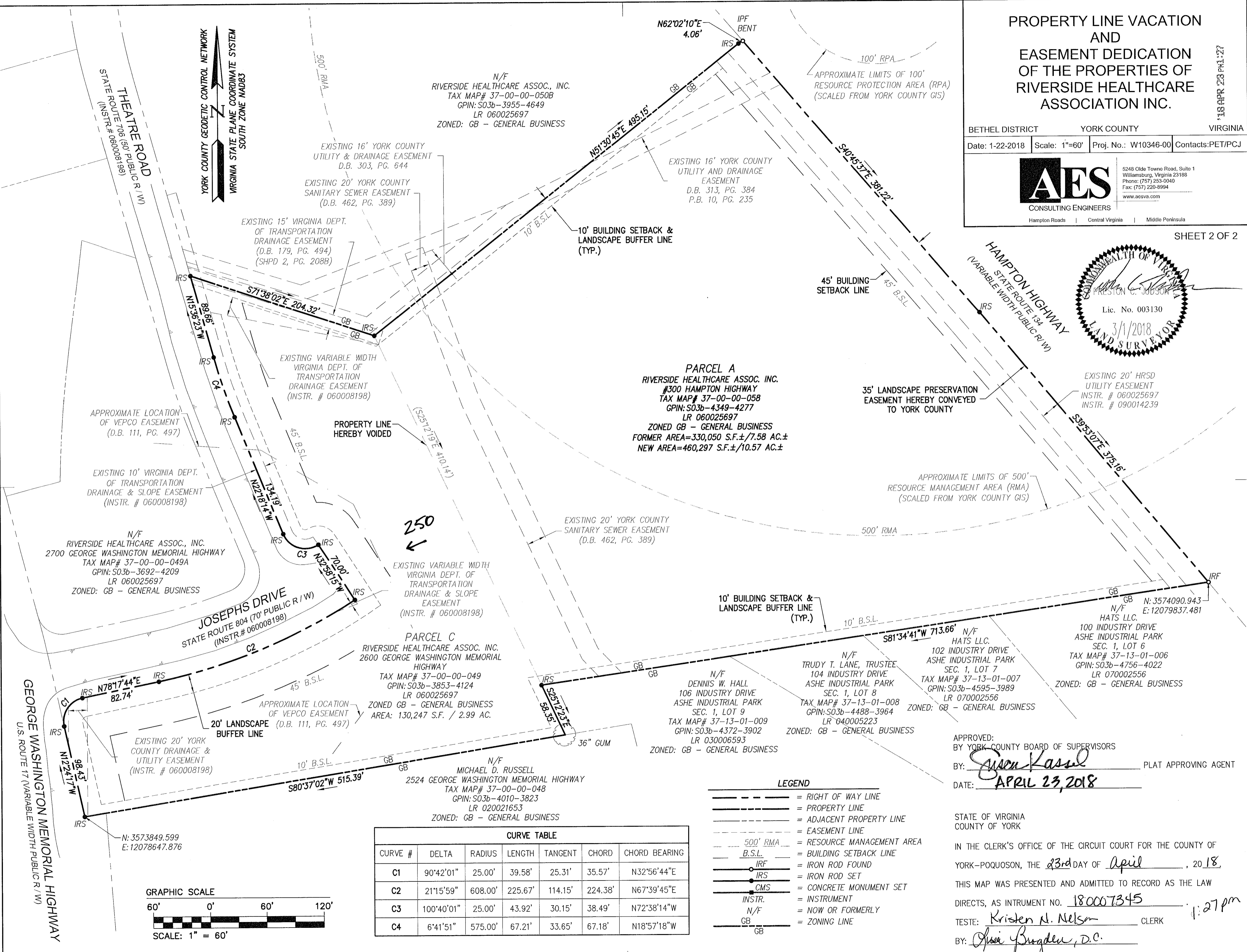
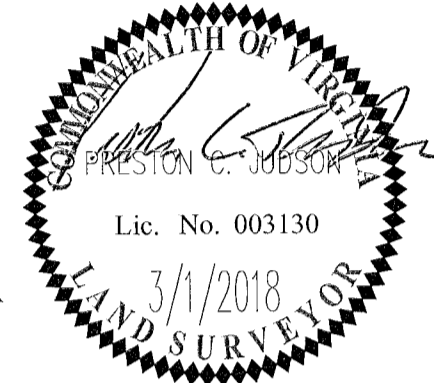
PROPERTY LINE VACATION AND EASEMENT DEDICATION OF THE PROPERTIES OF RIVERSIDE HEALTHCARE ASSOCIATION INC.

18 APR 23 PM 127

BETHEL DISTRICT YORK COUNTY VIRGINIA
 Date: 1-22-2018 Scale: 1"=60' Proj. No.: W10346-00 Contacts:PET/PCJ

AES
 CONSULTING ENGINEERS
 5248 Olde Towne Road, Suite 1
 Williamsburg, Virginia 23188
 Phone: (757) 253-0040
 Fax: (757) 220-8994
 www.aesva.com

SHEET 2 OF 2



CURVE TABLE						
CURVE #	DELTA	RADIUS	LENGTH	TANGENT	CHORD	CHORD BEARING
C1	90°42'01"	25.00'	39.58'	25.31'	35.57'	N32°56'44"E
C2	21°15'59"	608.00'	225.67'	114.15'	224.38'	N67°39'45"E
C3	100°40'01"	25.00'	43.92'	30.15'	38.49'	N72°38'14"W
C4	6°41'51"	575.00'	67.21'	33.65'	67.18'	N18°57'18"W

- LEGEND**
- = RIGHT OF WAY LINE
 - = PROPERTY LINE
 - - - = ADJACENT PROPERTY LINE
 - - - = EASEMENT LINE
 - 500' RMA --- = RESOURCE MANAGEMENT AREA
 - - - B.S.L. - - - = BUILDING SETBACK LINE
 - IRF = IRON ROD FOUND
 - IRS = IRON ROD SET
 - CMS = CONCRETE MONUMENT SET
 - INSTR. = INSTRUMENT
 - N/F = NOW OR FORMERLY
 - GB = ZONING LINE

APPROVED: BY YORK COUNTY BOARD OF SUPERVISORS
 BY: *Susan Kasal* PLAT APPROVING AGENT
 DATE: APRIL 23, 2018

STATE OF VIRGINIA COUNTY OF YORK
 IN THE CLERK'S OFFICE OF THE CIRCUIT COURT FOR THE COUNTY OF YORK-POQUOSON, THE 23rd DAY OF April, 2018.
 THIS MAP WAS PRESENTED AND ADMITTED TO RECORD AS THE LAW DIRECTS, AS INSTRUMENT NO. 180007345.
 TESTE: *Kristen N. Nelson* CLERK
 BY: *Oliver Prosser, D.C.*