

PLAT OF SUBDIVISION
WHITTAKER'S MILL
SINGLE FAMILY TOWNHOMES
SECTION 1, PHASE 2

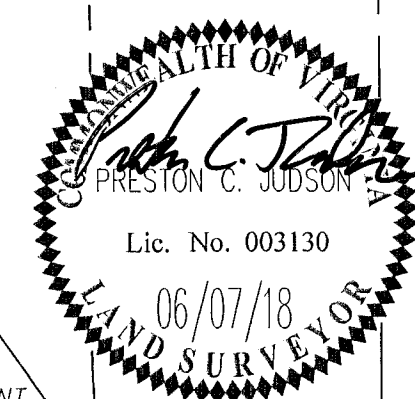
BRUTON DISTRICT COUNTY OF YORK VIRGINIA
Date: 06-07-18 Scale: 1"=40' Proj. No.: 7804-08 Proj. Contacts: TRS/PCJ



5248 Old Towne Road, Suite 1
Williamsburg, Virginia 23188
Phone: (757) 253-0040
Fax: (757) 220-8994
www.aesva.com

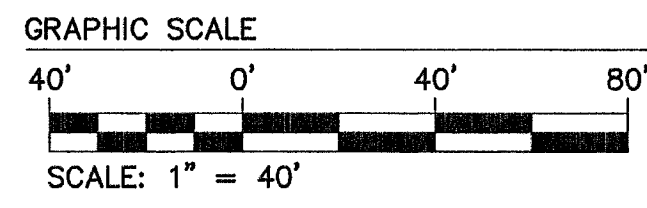
SHEET 3 OF 3

CURVE TABLE						
CURVE #	DELTA	RADIUS	LENGTH	TANGENT	CHORD	CHORD BEARING
C1	0°54'15"	234.50'	3.70'	1.85'	3.70'	S56°38'34"W
C2	7°54'35"	234.50'	32.37'	16.21'	32.35'	S61°02'59"W
C3	6°51'28"	234.50'	28.07'	14.05'	28.05'	S68°26'01"W
C4	6°51'28"	234.50'	28.07'	14.05'	28.05'	S75°17'28"W
C5	8°03'06"	234.50'	32.95'	16.50'	32.93'	S82°44'45"W
C6	8°01'59"	234.50'	32.88'	16.47'	32.85'	N89°12'43"W
C7	6°51'28"	234.50'	28.07'	14.05'	28.05'	N81°46'00"W
C8	6°51'28"	234.50'	28.07'	14.05'	28.05'	N74°54'32"W
C9	2°12'27"	234.50'	9.04'	4.52'	9.03'	N70°22'35"W
C10	54°32'14"	234.50'	223.21'	120.87'	214.88'	S83°27'33"W
C11	74°48'23"	25.00'	32.64'	19.12'	30.37'	S73°19'27"W
C12	89°10'18"	25.00'	38.91'	24.64'	35.10'	S8°39'53"E
C13	8°42'19"	542.96'	82.49'	41.33'	82.42'	N48°53'53"W
C14	99°31'08"	25.00'	43.42'	29.54'	38.17'	N85°40'50"E
C15	82°01'40"	25.00'	35.79'	21.74'	32.81'	N5°05'35"W
C16	4°59'10"	234.50'	20.41'	10.21'	20.40'	N43°36'50"W
C17	9°41'40"	185.50'	31.39'	15.73'	31.35'	S36°16'25"E
C18	102°57'29"	25.00'	44.92'	31.41'	39.12'	N87°24'00"E
C19	2°53'47"	224.50'	11.35'	5.68'	11.35'	N37°22'09"E
C20	7°11'49"	224.50'	28.20'	14.12'	28.18'	N42°24'57"E
C21	0°18'02"	224.50'	1.18'	0.59'	1.18'	N46°09'53"E
C22	10°23'38"	224.50'	40.73'	20.42'	40.67'	N41°07'05"E
C23	96°22'46"	25.00'	42.05'	27.95'	37.27'	N1°52'29"W
C24	5°34'12"	470.50'	45.74'	22.89'	45.72'	N52°50'58"W
C25	10°23'38"	170.50'	30.93'	15.51'	30.89'	S41°07'05"W
C26	115°04'15"	25.00'	50.21'	39.30'	42.19'	S21°36'52"E
C27	23°32'58"	185.50'	76.24'	38.67'	75.71'	N89°04'32"E
C28	14°06'34"	185.50'	45.68'	22.96'	45.56'	N70°14'46"E
C29	7°00'02"	185.50'	22.67'	11.35'	22.65'	N59°41'28"E
C30	44°39'34"	185.50'	144.59'	76.19'	140.96'	N78°31'14"E

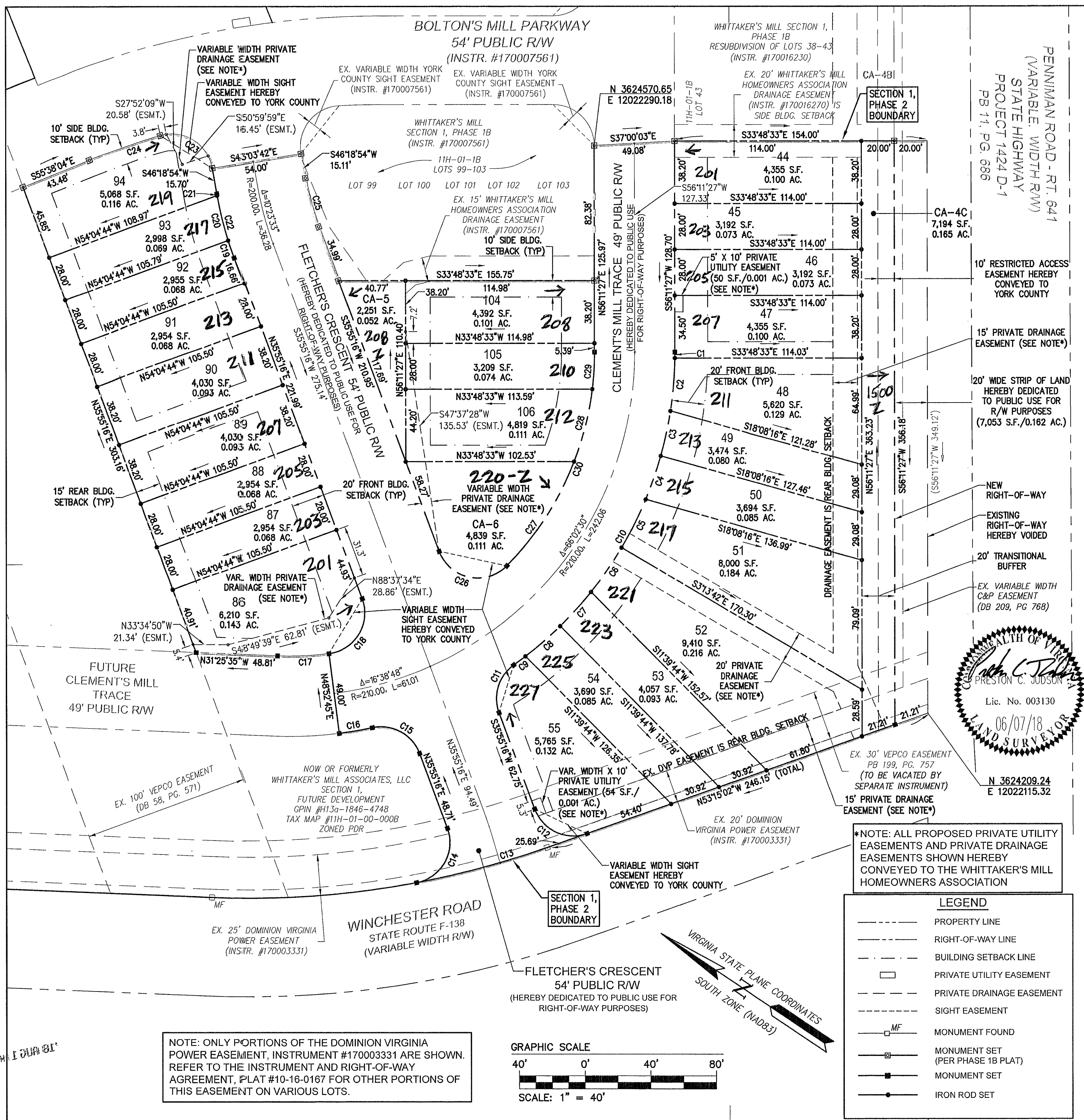


*NOTE: ALL PROPOSED PRIVATE UTILITY EASEMENTS AND PRIVATE DRAINAGE EASEMENTS SHOWN HEREBY CONVEYED TO THE WHITTAKER'S MILL HOMEOWNERS ASSOCIATION

LEGEND	
---	PROPERTY LINE
---	RIGHT-OF-WAY LINE
---	BUILDING SETBACK LINE
---	PRIVATE UTILITY EASEMENT
---	PRIVATE DRAINAGE EASEMENT
---	SIGHT EASEMENT
MF	MONUMENT FOUND
MS	MONUMENT SET (PER PHASE 1B PLAT)
MS	MONUMENT SET
IR	IRON ROD SET



NOTE: ONLY PORTIONS OF THE DOMINION VIRGINIA POWER EASEMENT, INSTRUMENT #170003331 ARE SHOWN. REFER TO THE INSTRUMENT AND RIGHT-OF-WAY AGREEMENT, PLAT #10-16-0167 FOR OTHER PORTIONS OF THIS EASEMENT ON VARIOUS LOTS.



APPROVED:
YORK COUNTY BOARD OF SUPERVISORS
BY: *[Signature]* PLAT APPROVING AGENT
DATE: JULY 20, 2018
STATE OF VIRGINIA
COUNTY OF YORK
IN THE CLERK'S OFFICE OF THE CIRCUIT COURT FOR THE COUNTY OF YORK-POQUOSON THE 1st DAY OF August, 2018.
THIS MAP WAS PRESENTED AND ADMITTED TO RECORD AS THE LAW DIRECTS, AS INSTRUMENT NO. 180014428
TESTE: KRISTEN N. NELSON, CLERK CLERK
BY: *[Signature]*