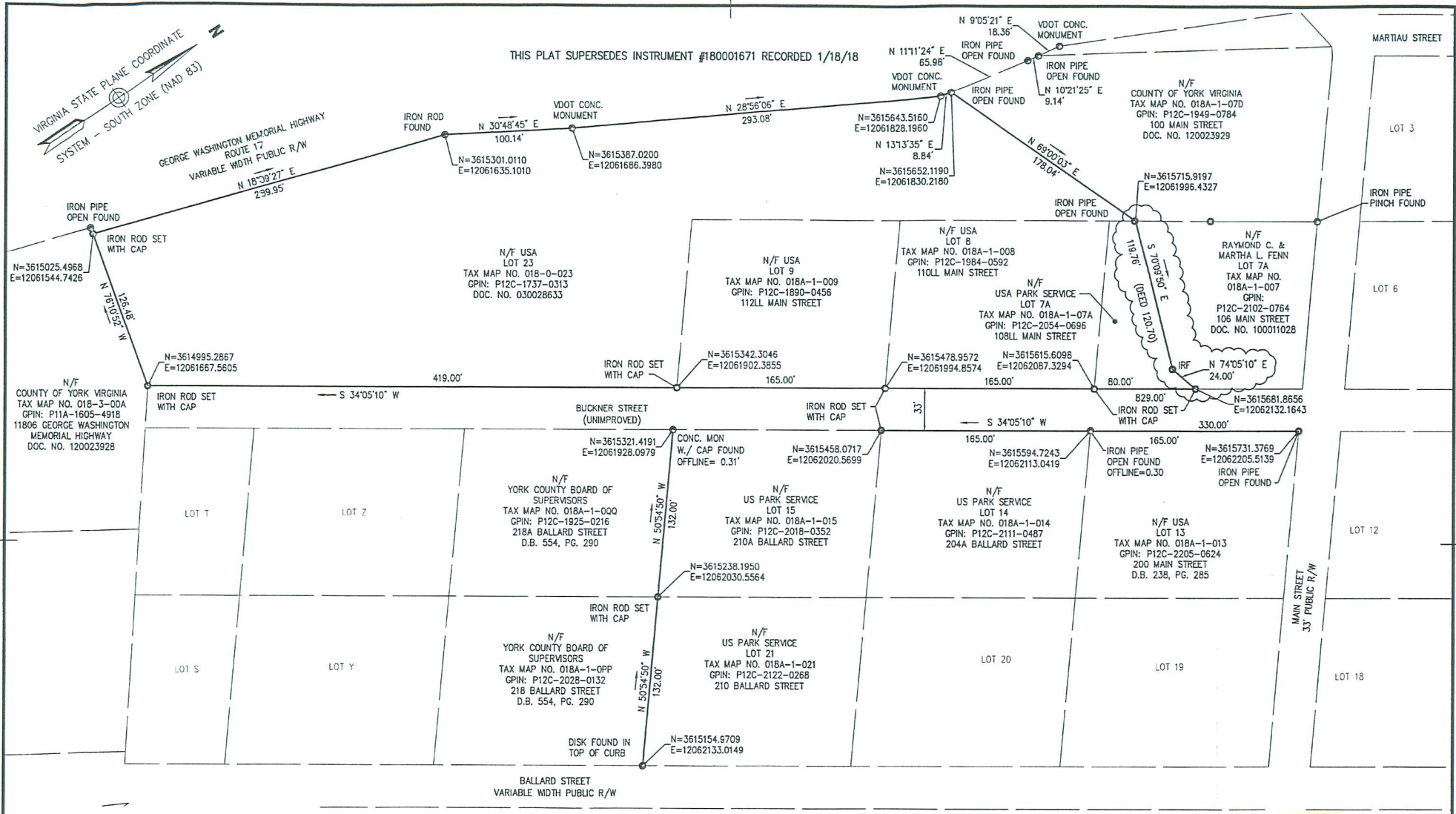


VIRGINIA STATE PLANE COORDINATE SYSTEM - SOUTH ZONE (NAD 83)

THIS PLAT SUPERSEDES INSTRUMENT #180001671 RECORDED 1/18/18



PLAT INSTRUMENT # 180014455

- NOTES:
1. THIS SURVEY DOES NOT REPRESENT A SUBDIVISION OR BOUNDARY LINE ADJUSTMENT.
 2. THE PROPERTY LINES SHOWN ARE BASE ON DEEDS, PLATS OF RECORD, AND AN ON THE GROUND SURVEY PERFORMED BY VHD DURING NOVEMBER 2017.
 3. COORDINATE VALUES SHOWN BASED ON YORK COUNTY GEODETIC CONTROL MONUMENT STATION. NO. 050
N 3614674.664
E 12061943.247
 4. COORDINATES SHOWN TO PROPERTY CORNER.

Filed in the Clerk's Office, Circuit Court,
York County - Pocahontas, VA
the 1st day of August, 2018
Test: Kristen H. Nelson, Clerk
By: *Stephen Romeo*, D.C.



SURVEYOR'S CERTIFICATE:

I HEREBY CERTIFY THAT TO THE BEST OF MY KNOWLEDGE AND BELIEF, THIS PLAT COMPLIES WITH THE REQUIREMENTS OF THE COMMONWEALTH OF VIRGINIA BOARD OF ARCHITECTS, PROFESSIONAL ENGINEERS, LAND SURVEYORS, CERTIFIED INTERIOR DESIGNERS AND LANDSCAPE ARCHITECTS.



PLAT OF CORRECTION
PARTIAL BOUNDARY LINE RETRACEMENT
U.S. PARK SERVICE
COLONIAL NATIONAL HISTORICAL PARK
PARCELS "7A", "8", "9", "13", "14",
"15", "21" AND "23"
YORK COUNTY, VIRGINIA
SCALE: 1"=50' DATE: AUGUST 1, 2018

vhb Transportation
Land Development
Environmental Services
351 McLaws Circle, Suite 3
Williamsburg, Virginia 23185
757 220 0500 • FAX 757 903 2794