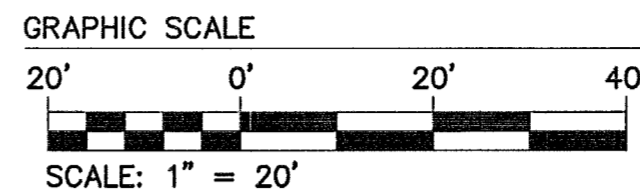


CURVE TABLE						
CURVE #	DELTA	RADIUS	LENGTH	TANGENT	CHORD	CHORD BEARING
C1	19°49'17"	165.00'	57.08'	28.83'	56.80'	S82°43'23"E
C2	15°49'44"	165.00'	45.58'	22.94'	45.44'	S80°43'37"E
C3	3°59'32"	165.00'	11.50'	5.75'	11.49'	N89°21'45"E
C4	45°00'46"	25.00'	19.64'	10.36'	19.14'	N70°07'38"W
C5	278°07'34"	75.00'	364.07'	—	98.28'	N6°41'02"W
C6	23°03'26"	75.00'	30.18'	15.30'	29.98'	S59°08'59"E
C7	255°04'08"	75.00'	333.89'	97.62'	118.95'	N18°12'46"W
C8	61°59'15"	25.00'	27.05'	15.02'	25.75'	N65°14'48"E
C9	10°56'50"	85.00'	16.24'	8.14'	16.22'	S78°17'10"E
C10	65°10'07"	25.00'	28.44'	15.98'	26.93'	N38°05'38"W
C11	18°51'41"	225.00'	74.07'	37.37'	73.73'	N3°55'16"E

SEE SHEET 3



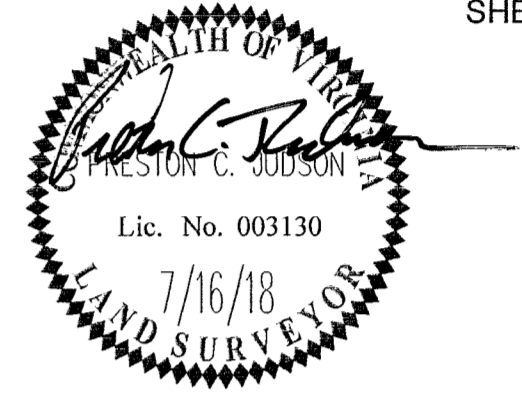
YORK COUNTY GEODETIC
VIRGINIA STATE PLANE COORDINATES
SOUTH ZONE (NAD83)

SUBDIVISION OF THE PROPERTY
OF
BULIFANTS RESIDENTIAL, L.L.C.
(ARBORDALE PUMP STATION LOT)

BRUTON DISTRICT YORK COUNTY VIRGINIA
Date: 7/16/18 Scale: 1"=20' Proj. No.: W10466-00 Proj. Contacts: JAG/PCJ

AES
CONSULTING ENGINEERS
5248 Old Towne Road, Suite 1
Williamsburg, Virginia 23188
Phone: (757) 253-0040
Fax: (757) 220-8994
www.aesva.com

SHEET 2 OF 3



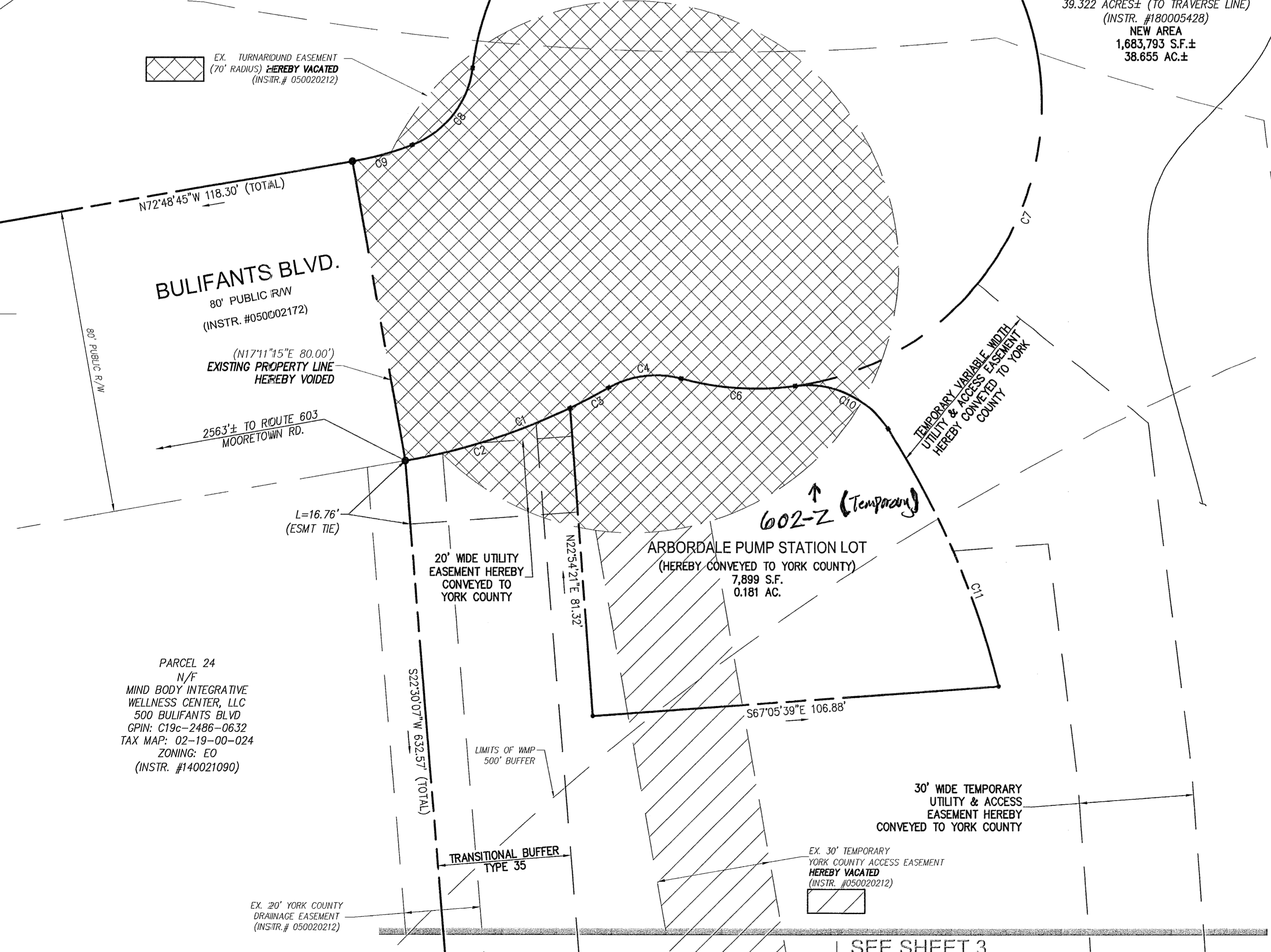
**BULIFANTS BOULEVARD
VARIABLE WIDTH
PUBLIC RIGHT-OF-WAY**
(HEREBY DEDICATED TO PUBLIC USE FOR
RIGHT-OF-WAY PURPOSES)
21,158 S.F., 0.486 AC.

FUTURE DEVELOPMENT
PARCEL 2A
BULIFANTS RESIDENTIAL, L.L.C.
601 BULIFANTS BLVD.
GPIN: C19c-2165-1207
TAX MAP: 02-00-00-034A2
ZONING: PDR
FORMER AREA=1,712,850 S.F.±
(TO TRAVERSE LINE)
39.322 ACRES± (TO TRAVERSE LINE)
(INSTR. #180005428)
NEW AREA
1,683,793 S.F.±
38.655 AC.±

EX. TURNAROUND EASEMENT
(70' RADIUS) HEREBY VACATED
(INSTR. # 050020212)

- LEGEND**
- PROPERTY LINE
 - - - RIGHT-OF-WAY LINE
 - - - EASEMENT
 - RIGHT OF WAY POINT - CONCRETE MONUMENT SET
 - CMF CONCRETE MONUMENT FOUND
 - IRS ROD SET

NOTE: TEMPORARY UTILITY & ACCESS EASEMENTS SHALL AUTOMATICALLY EXPIRE UPON THE RECORDATION OF THE FUTURE ARBORDALE, PHASE II FINAL PLAT. (SEE SHEET 3 FOR EXISTING & PROPOSED EASEMENT DETAILS).



PARCEL 24
N/F
MIND BODY INTEGRATIVE
WELLNESS CENTER, LLC
500 BULIFANTS BLVD
CPIN: C19c-2486-0632
TAX MAP: 02-19-00-024
ZONING: EO
(INSTR. #140021090)

20' WIDE UTILITY
EASEMENT HEREBY
CONVEYED TO
YORK COUNTY

ARBORDALE PUMP STATION LOT
(HEREBY CONVEYED TO YORK COUNTY)
7,899 S.F.
0.181 AC.

30' WIDE TEMPORARY
UTILITY & ACCESS
EASEMENT HEREBY
CONVEYED TO YORK COUNTY

EX. 30' TEMPORARY
YORK COUNTY ACCESS EASEMENT
HEREBY VACATED
(INSTR. #050020212)

APPROVED:
BY YORK COUNTY BOARD OF SUPERVISORS
BY: Don Kassel PLAT APPROVING AGENT
DATE: July 20, 2018

STATE OF VIRGINIA
COUNTY OF YORK
IN THE CLERK'S OFFICE OF THE CIRCUIT COURT FOR THE COUNTY OF
YORK-POQUOSON, THE 14th DAY OF August, 2018.
THIS MAP WAS PRESENTED AND ADMITTED TO RECORD AS THE LAW
DIRECTS, AS INSTRUMENT NO. 180014599
TESTE: KRISTEN N. NELSON, CLERK CLERK
BY: Caron Phillip D.L.

SEE SHEET 3