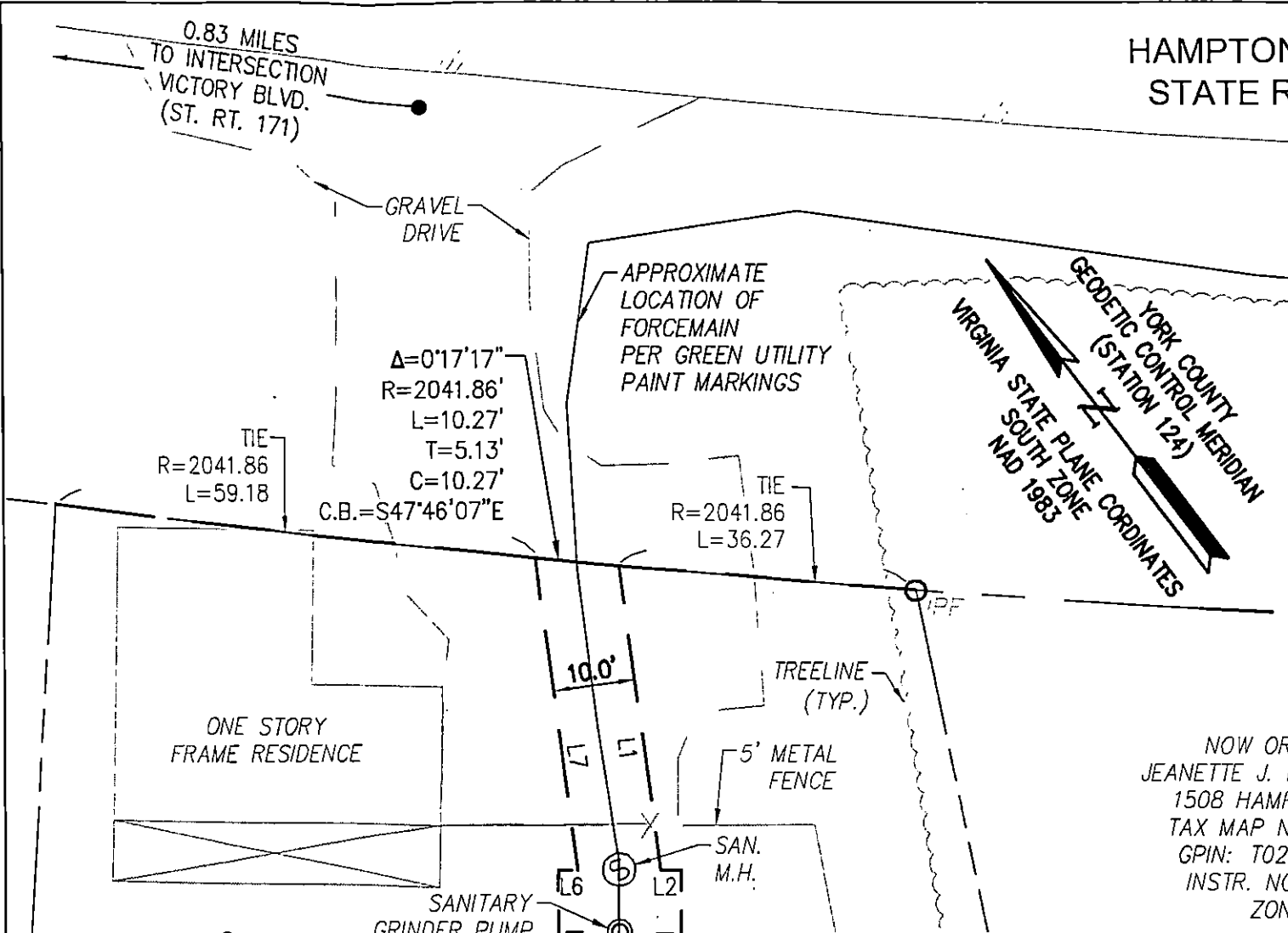


HAMPTON HIGHWAY
STATE ROUTE 134



LINE TABLE		
LINE	BEARING	LENGTH
L1	S29°10'55"W	37.50'
L2	S53°15'00"E	2.50'
L3	S36°45'00"W	15.00'
L4	N53°15'00"W	15.00'
L5	N36°45'00"E	15.00'
L6	S53°15'00"E	1.63'
L7	N29°10'55"E	38.48'

- NOTES:
- EASEMENT LOCATION IS FROM A FORCEMAIN AS-BUILT SURVEY COMPLETED BY AES CONSULTING ENGINEERS ON 12/18/2018.
 - IMPROVEMENTS SHOWN ARE FROM A SURVEY PERFORMED ON 4/23/2018 AND CONSTRUCTION PLANS BY AES CONSULTING ENGINEERS TITLED "FORCEMAIN ADDITION FOR 1500 HAMPTON HIGHWAY" DATED 7/3/2018.
 - THIS PLAT IS INTENDED FOR EASEMENT CONVEYANCE ONLY AND DOES NOT REPRESENT A BOUNDARY SURVEY.
 - THIS SURVEY WAS PERFORMED WITHOUT THE BENEFIT OF A TITLE REPORT. THIS PROPERTY IS SUBJECT TO EASEMENTS, SERVITUDES, COVENANTS, AND ENCUMBRANCES OF RECORD.



NOW OR FORMERLY
JEANETTE J. KEENER, TRUSTEE
1508 HAMPTON HIGHWAY
TAX MAP NO. 037E 1 11C
GPIN: T02b-3267-4979
INSTR. NO. 050008026
ZONED R13

VARIABLE WIDTH
UTILITY EASEMENT
TO BE DEDICATED
TO COUNTY OF YORK
AREA: 604 SQ. FT.±
0.014 AC.±

NOW OR FORMERLY
MARK W. FRYE, ET UX
1500 HAMPTON HIGHWAY
TAX MAP NO. 037E 1 10
GPIN: T03d-3200-0073
D.B. 780, PG. 591
ZONED R13

PLAT OF EASEMENT DEDICATION
LOCATED AT
1500 HAMPTON HIGHWAY
TO BE CONVEYED TO
COUNTY OF YORK

YORK COUNTY VIRGINIA

Project Contacts: PCJ / DSB	Project Number: W10539
Scale: 1" = 20'	Date: 01-14-2019 Sheet: 1 of 1



5248 Olds Towne Road, Suite 1
Williamsburg, Virginia 23188
Phone: (757) 253-0040
Fax: (757) 220-8994
www.aesva.com

CONSULTING ENGINEERS
Hampton Roads | Central Virginia | Middle Peninsula

DATE: 02/12/2019 @09:24 AM

INSTRUMENT 190002154
RECORDED IN THE CLERK'S OFFICE OF
YORK COUNTY - POQUOSON CIRCUIT COURT ON
FEBRUARY 12, 2019 AT 09:29 AM
KRISTEN N. NELSON, CLERK
RECORDED BY: CXW

Crystal Jones