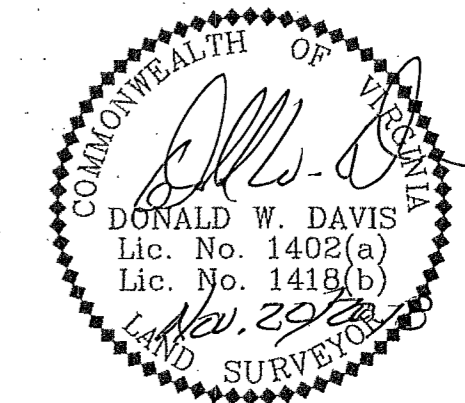
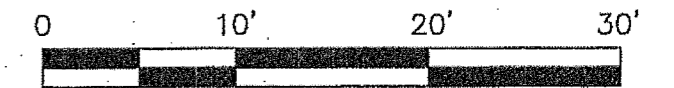


PHASE THREE - BUILDING FOUR DETAIL

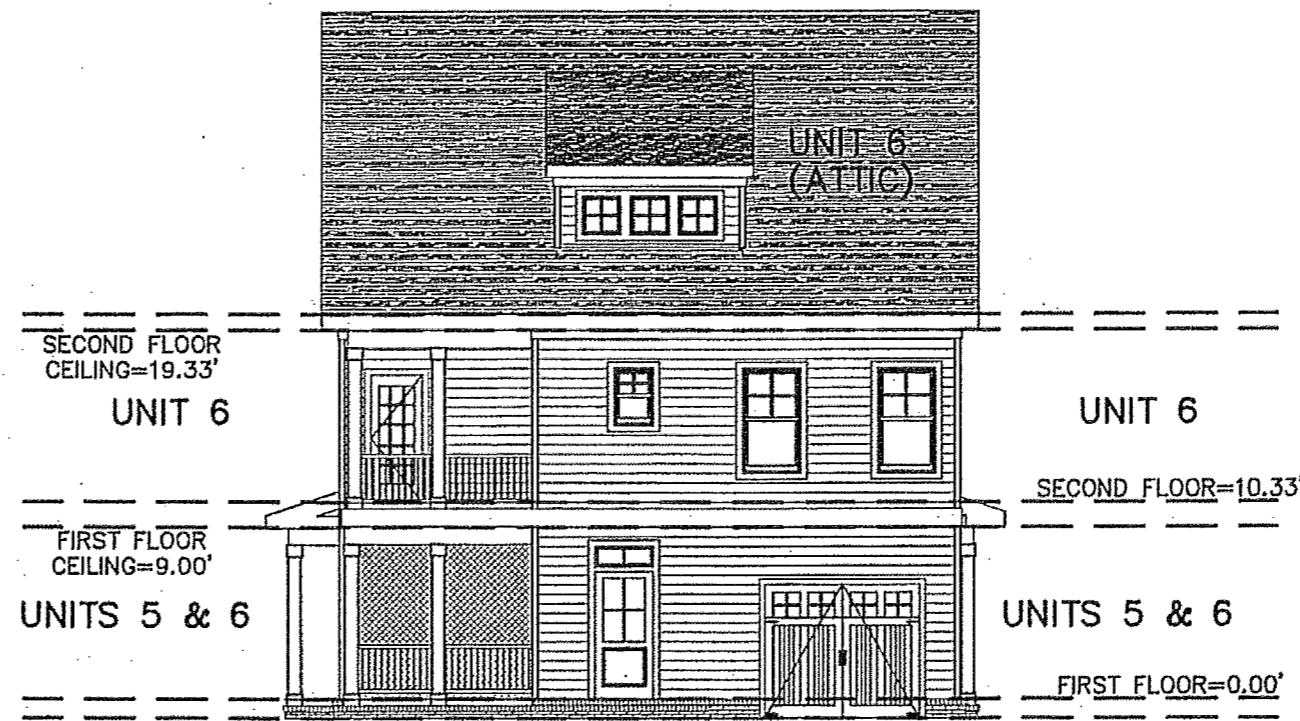
CONDOMINIUM PLAT
OF
PHASE THREE
MAINSTAY AT
COMMONWEALTH GREEN
SECTION ONE

BETHEL MAGISTERIAL DISTRICT
COUNTY OF YORK, VIRGINIA
SCALE: 1"=10' DATE: NOVEMBER 12, 2018
SHEET 7 OF 7

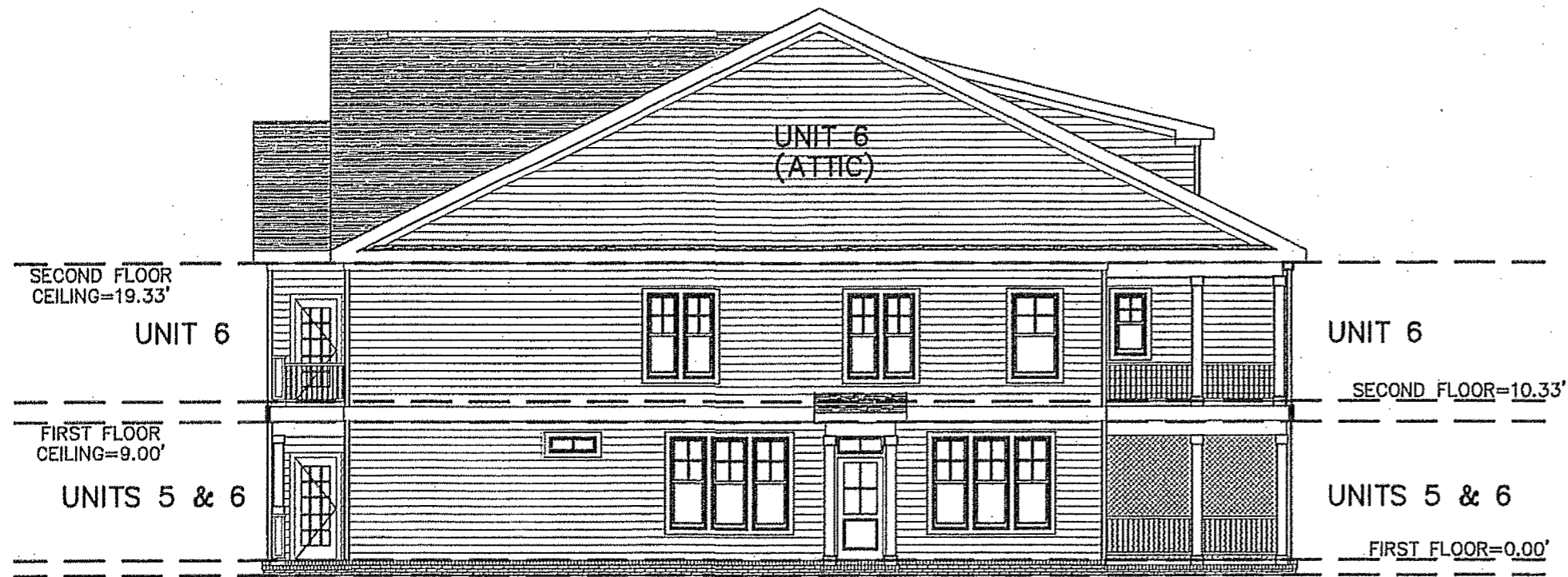
DAVIS & ASSOCIATES, P.C.
LAND SURVEYORS AND PLANNERS
3630 GEORGE WASHINGTON MEMORIAL HIGHWAY
YORKTOWN, VIRGINIA 23693
(757)867-8583



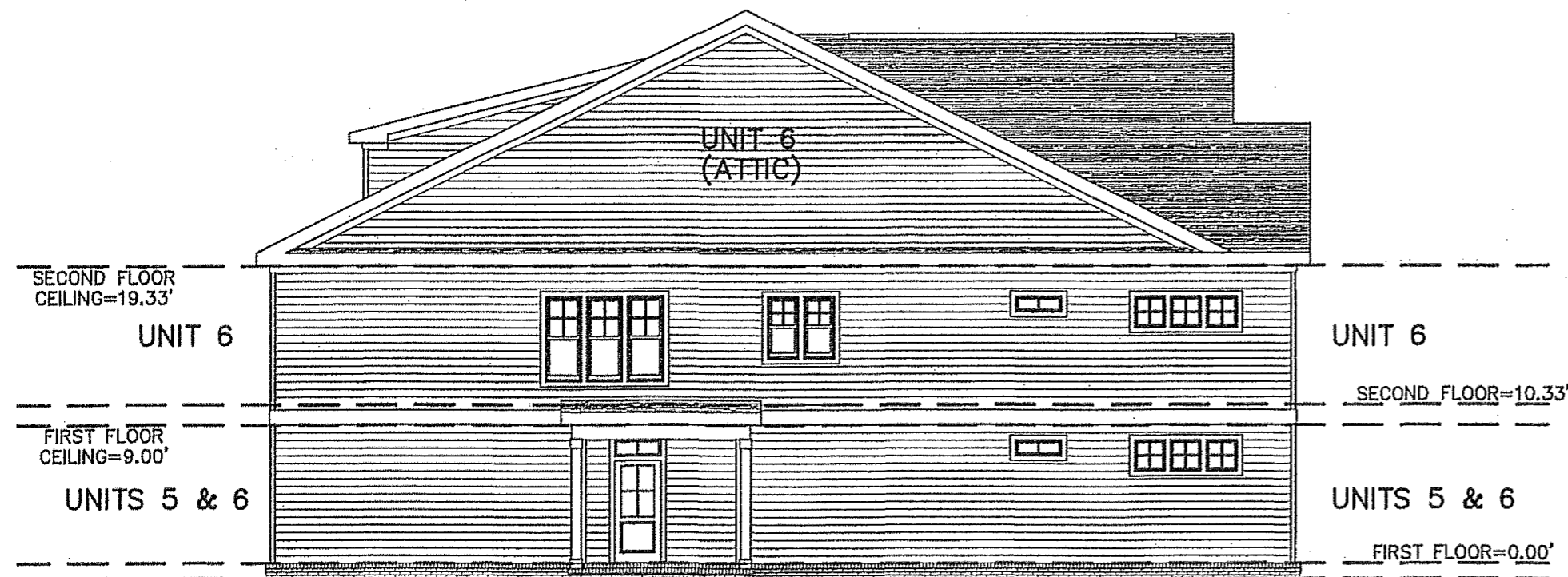
FRONT ELEVATION
(PUBLIC STREET SIDE)



REAR ELEVATION
(PRIVATE LANE SIDE)



RIGHT SIDE ELEVATION



LEFT SIDE ELEVATION

APPROVED
YORK COUNTY BOARD OF SUPERVISORS
BY: Jason Kasel
PLAT APPROVING AGENT
DATE: MAY 16, 2019

STATE OF VIRGINIA
COUNTY OF YORK
IN THE CLERK'S OFFICE OF THE YORK -
POQUOSON CIRCUIT COURT THIS 16
DAY OF May, 2019, THIS MAP WAS
PRESENTED AND ADMITTED TO RECORD AS
THE LAW DIRECTS AS INSTRUMENT # 190007160

TESTE: Kristen W. Nelson
CLERK
BY: Francois Bergeron