

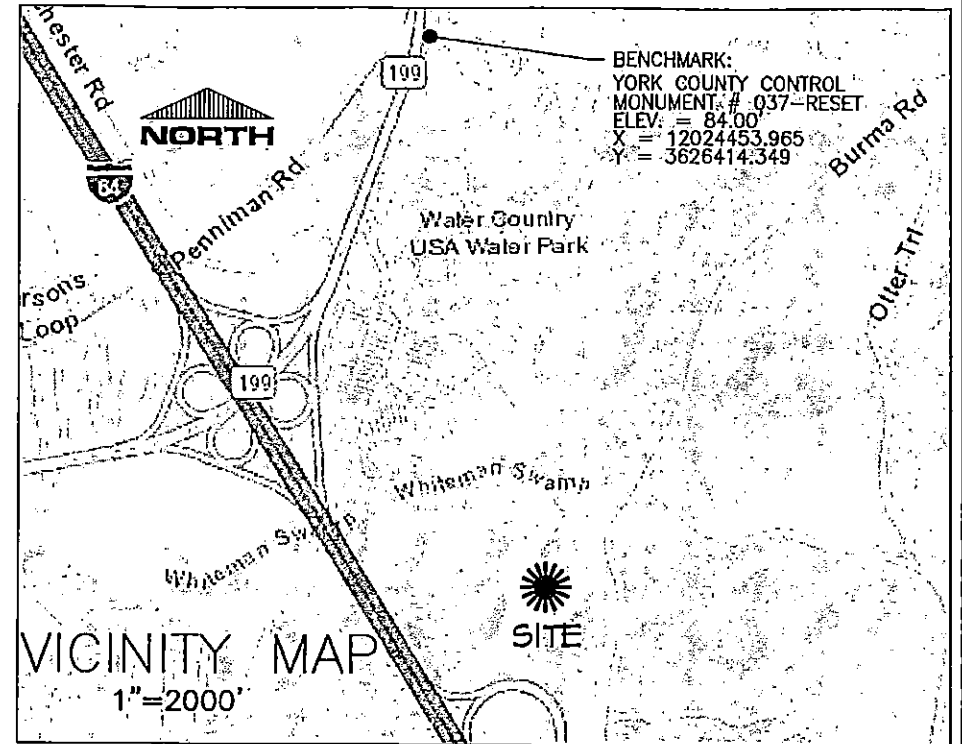
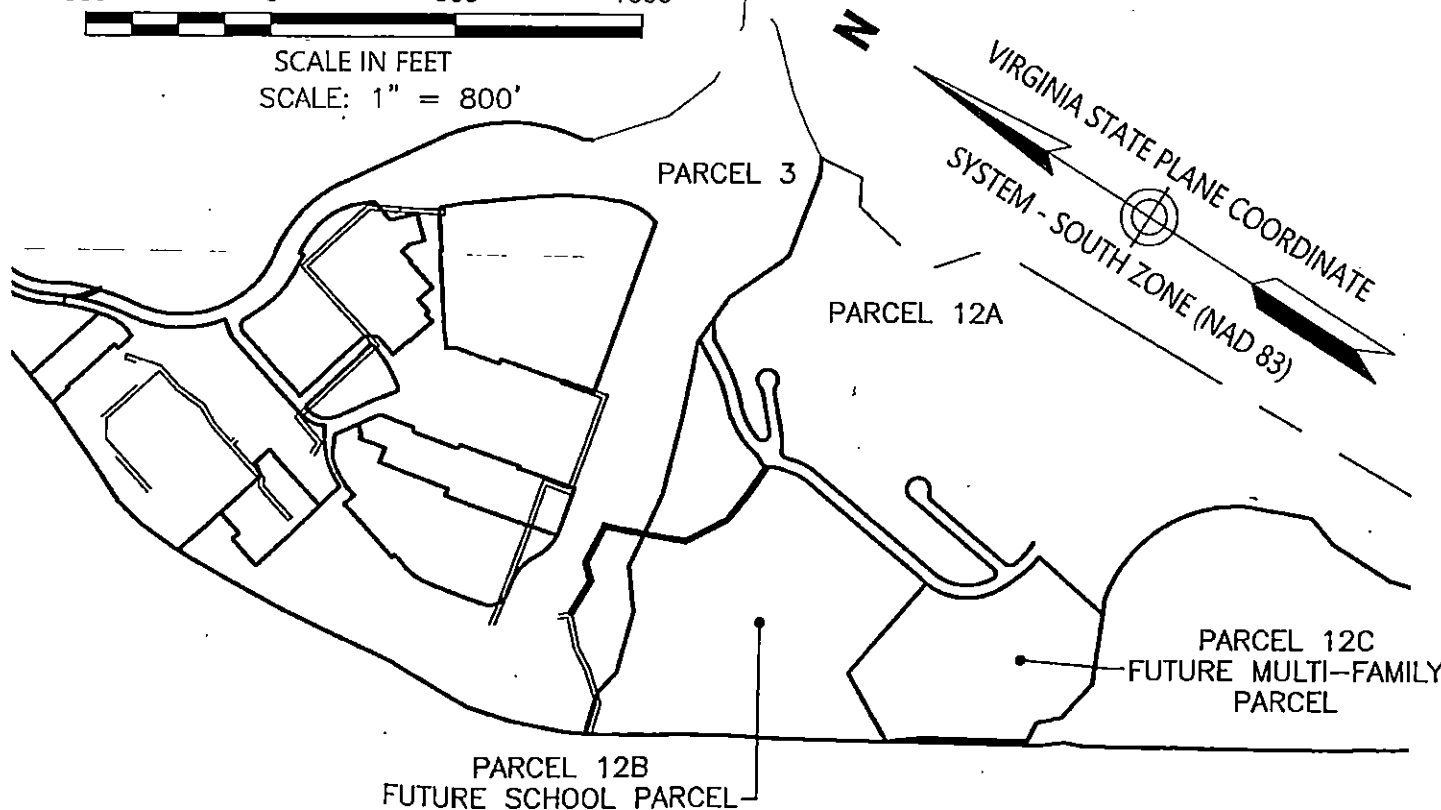
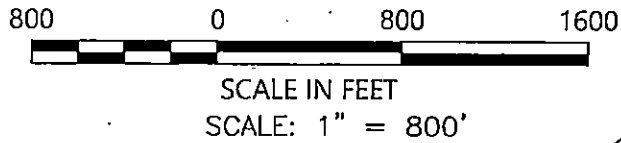
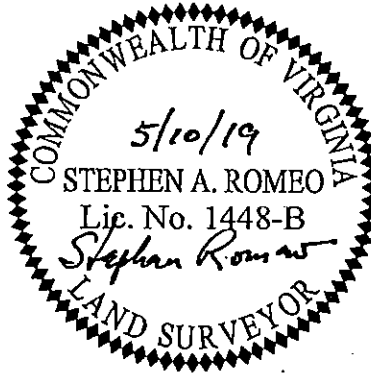
EASEMENT NOTE

THE RECORDATION OF THIS PLAT SHALL OPERATE TO TRANSFER TO THE COUNTY OF YORK AN EASEMENT INDICATED ON THIS PLAT FOR SANITARY SEWER TO CREATE A PUBLIC RIGHT-OF-PASSAGE OVER THE SAME.

THE SANITARY SEWER EASEMENT CONVEYED TO THE COUNTY BY RECORDATION OF THIS PLAT SHALL BE EXCLUSIVE TO THE COUNTY. CONVEYANCE OF SUCH EASEMENT TO THE COUNTY ALSO INCLUDES THE COUNTY'S RIGHT OF INGRESS AND EGRESS OVER THE OWNER'S LAND ADJACENT TO THE EASEMENT AS NECESSARY TO INSPECT, MAINTAIN AND OPERATE THE COUNTY'S FACILITIES WITHIN THE EASEMENT.

AREA SUMMARY

EASEMENT PARCEL 3 = 11,907 SQ. FT. / 0.2734 AC.
 EASEMENT PARCEL 12B = 13,408 SQ. FT. / 0.3078 AC.
 EASEMENT TOTAL = 25,315 SQ. FT. / 0.5812 AC.



20' SANITARY SEWER EASEMENT

HEREBY GRANTED TO
YORK COUNTY
 EASEMENT GRANTED BY
**MARQUIS WILLIAMSBURG RE
 HOLDING LLC**

BRUTON DISTRICT, YORK COUNTY, VIRGINIA
 DATE: 5/10/2019 SCALE: 1" = 100'
 SHEET 1 OF 2

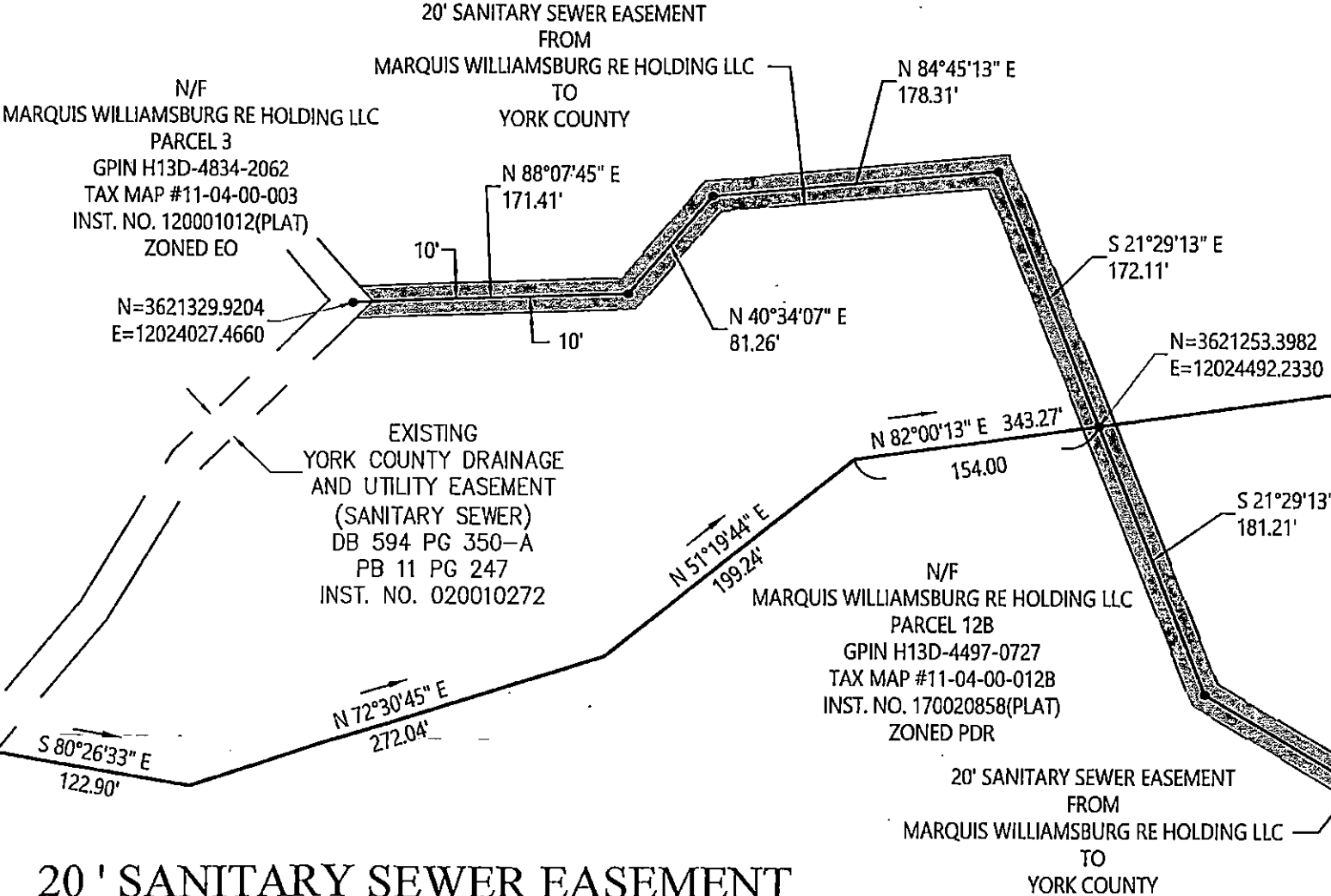


Transportation
 Land Development
 Environmental Services

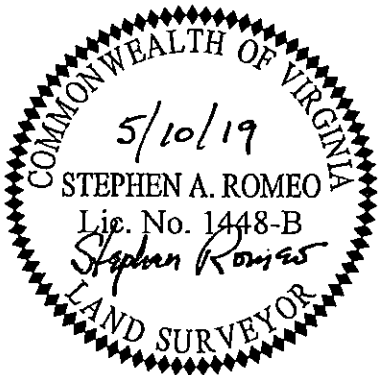
351 McLaws Circle, Suite 3
 Williamsburg, Virginia 23185
 757 220 0500 • FAX 757 903 2794

GENERAL NOTES

1. CENTERLINE OF EASEMENT BASED ON AN ON THE GROUND SURVEY LOCATING SEWER MANHOLES. PIPE ALIGNMENT WAS NOT SURVEYED. SURVEY WAS PERFORMED DURING MARCH 2019.

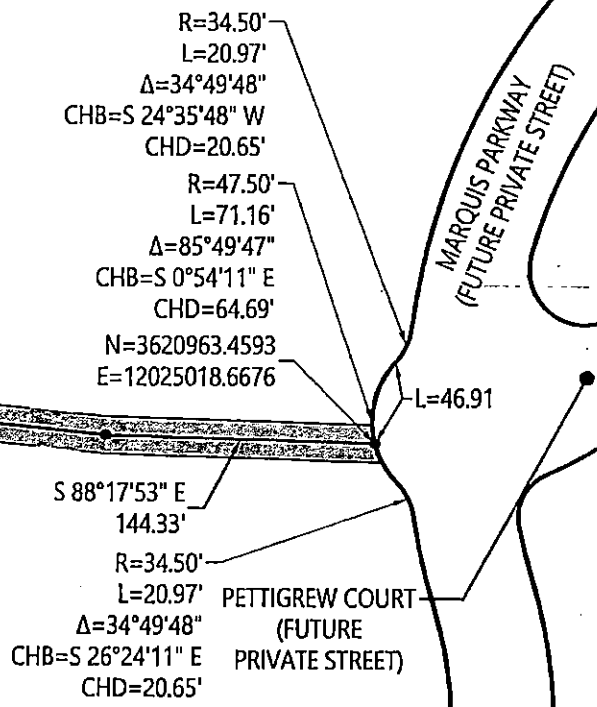


20' SANITARY SEWER EASEMENT
 HEREBY GRANTED TO
YORK COUNTY
 EASEMENT GRANTED BY
MARQUIS WILLIAMSBURG RE HOLDING LLC
 BRUTON DISTRICT, YORK COUNTY, VIRGINIA
 DATE: 5/10/2019 SCALE: 1" = 100'
 SHEET 2 OF 2



Transportation
 Land Development
 Environmental Services

351 McLaws Circle, Suite 3
 Williamsburg, Virginia 23185
 757 220 0500 • FAX 757 903 2794



MARQUIS PARKWAY
 (FUTURE PRIVATE STREET)

PETTIGREW COURT
 (FUTURE PRIVATE STREET)