

CURVE	ARC LENGTH	RADIUS	DELTA ANGLE	CHORD BEARING	CHORD LENGTH
C1	75.08'	50.00'	86°02'16"	N 24°15'30" E	68.22'
C2	499.54'	325.00'	88°03'57"	N 68°43'27" W	451.80'
C3	39.01'	25.00'	89°24'40"	S 68°01'02" E	35.17'
C4	78.63'	325.00'	13°51'43"	S 74°10'26" W	78.44'
C5	420.91'	325.00'	74°12'14"	N 61°47'36" W	392.10'

LINE	BEARING	DISTANCE
L1	N 22°37'58" W	2.55'



**RESUBDIVISION OF PARCEL B  
STANDING IN THE NAME OF  
THE ECONOMIC DEVELOPMENT AUTHORITY  
OF YORK COUNTY, VIRGINIA**

BEING LOCATED IN THE  
NELSON MAGISTERIAL DISTRICT, YORK COUNTY, VIRGINIA  
DATE: 05-02-2019 SCALE: 1"=60' JOB # 18-421



3925 Midlands Road, Williamsburg, Virginia 23188  
Phone: (757) 565-1677 Fax: (757) 565-0782  
web: landtechresources.com

SHEET 2 OF 3

N/F  
RUSSELL D. WASHINGTON, JR ET UX  
D.B. 290, PG. 207  
D.B. 313, PG. 74(PLAT)  
GPIN: R08C-1443-1443  
TAX MAP #24-00-00-203A  
ZONE: IG

N/F  
S. B. COX, INC.  
INST. #100011924(PLAT)  
GPIN: R08C-2217-1801  
TAX MAP #24-87-00-000C  
ZONE: IG

N/F  
COUNTY OF YORK  
DB. 369, PG. 462  
P.B. 11, PG. 257  
GPIN: R08D-3268-1358  
TAX MAP #24-00-00-181  
ZONE: IG/IL

N:3596337.69  
E:12072314.60

140.84'  
N/F  
MRP ENTERPRISES LLC  
GPIN: R08C-2365-0849  
INST. #04001054  
INST. #040010539(PLAT)  
D.B. 1122, PG. 652  
TAX MAP #24-60-00-028  
ZONE: IL/IG

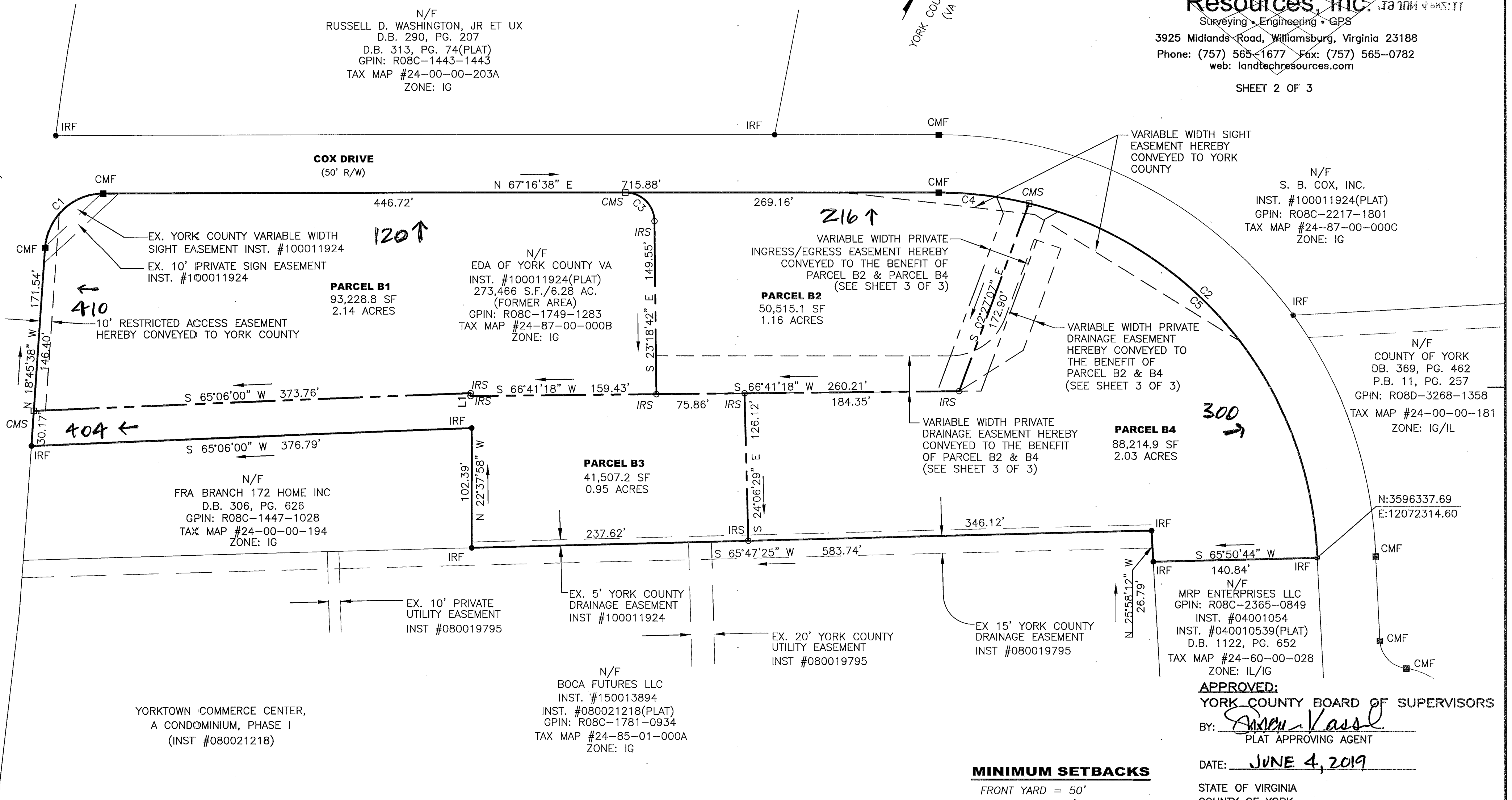
**APPROVED:**  
YORK COUNTY BOARD OF SUPERVISORS  
BY: *Susan Kassel*  
PLAT APPROVING AGENT

DATE: JUNE 4, 2019  
STATE OF VIRGINIA  
COUNTY OF YORK  
IN THE CLERK'S OFFICE OF THE CIRCUIT COURT FOR THE  
COUNTY OF YORK-POQUOSON THE 4th DAY OF June  
2019. THIS PLAT WAS PRESENTED AND ADMITTED TO RECORD  
AS THE LAW DIRECTS AS INSTRUMENT NO. 190008236

KRISTEN N. NELSON, CLERK  
TESTE: \_\_\_\_\_  
BY: *Traci Byrd* CLERK

LANDTECH RESOURCES, INC.

VIRGINIA STATE ROUTE 634 - OLD YORK-HAMPTON HIGHWAY  
(VARIABLE WIDTH RIGHT-OF-WAY)



**MINIMUM SETBACKS**

FRONT YARD = 50'  
SIDE YARD = 15'  
REAR YARD = 15'

**LEGEND**

CMF = CONC. MONUMENT FOUND  
CMS = CONC. MONUMENT SET  
IRF = IRON ROD FOUND  
IPF = IRON PIPE FOUND  
PPF = PINCHED PIPE FOUND

