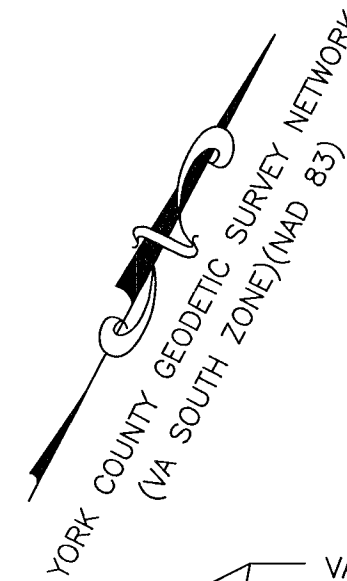


EASEMENT CURVE TABLE

CURVE	ARC LENGTH	RADIUS	DELTA ANGLE	CHORD BEARING	CHORD LENGTH
EC6	220.73'	325.00'	38°54'47"	S 79°26'19" E	216.51'
EC7	61.58'	50.01'	70°33'09"	N 32°47'52" E	57.76'



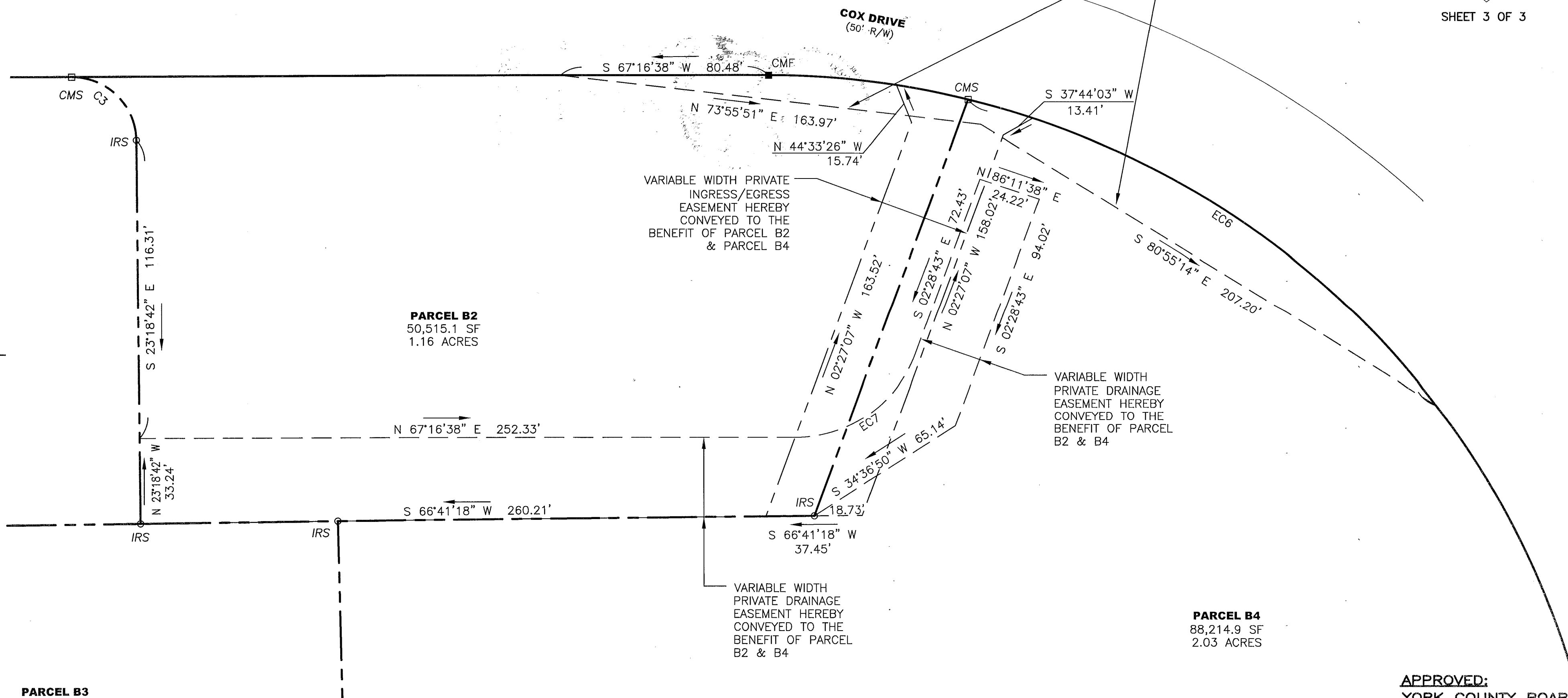
RESUBDIVISION OF PARCEL B  
STANDING IN THE NAME OF  
THE ECONOMIC DEVELOPMENT AUTHORITY  
OF YORK COUNTY, VIRGINIA

BEING LOCATED IN THE  
NELSON MAGISTERIAL DISTRICT, YORK COUNTY, VIRGINIA

DATE: 05-02-2019 SCALE: 1"=30' JOB #118-421

**LandTech Resources, Inc.**  
Surveying • Engineering • GPS  
3925 Midlands Road, Williamsburg, Virginia 23188  
Phone: (757) 565-1677 Fax: (757) 565-0782  
web: landtechresources.com

SHEET 3 OF 3



**PARCEL B3**  
41,507.2 SF  
0.95 ACRES

**PARCEL B2**  
50,515.1 SF  
1.16 ACRES

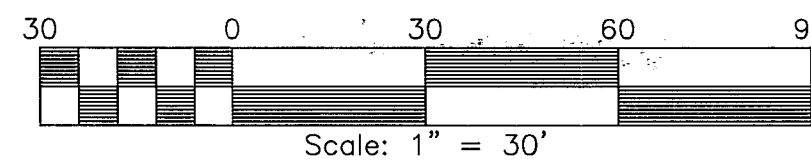
**PARCEL B4**  
88,214.9 SF  
2.03 ACRES

**MINIMUM SETBACKS**

- FRONT YARD = 50'
- SIDE YARD = 15'
- REAR YARD = 15'

**LEGEND**

- CMF = CONC. MONUMENT FOUND
- CMS = CONC. MONUMENT SET
- IRF = IRON ROD FOUND
- IPF = IRON PIPE FOUND
- PPF = PINCHED PIPE FOUND



APPROVED:  
YORK COUNTY BOARD OF SUPERVISORS  
BY: Susan Kassel  
PLAT APPROVING AGENT

DATE: JUNE 4, 2019

STATE OF VIRGINIA  
COUNTY OF YORK  
IN THE CLERK'S OFFICE OF THE CIRCUIT COURT FOR THE  
COUNTY OF YORK-POQUOSON THE 4th DAY OF June  
2019. THIS PLAT WAS PRESENTED AND ADMITTED TO RECORD  
AS THE LAW DIRECTS AS INSTRUMENT NO. 190008236

TESTE: KRISTEN H. NELSON, CLERK  
BY: Francis Boy CLERK