

PHASE FOUR – BUILDING FIVE DETAIL

CONDOMINIUM PLAT
OF

PHASE FOUR

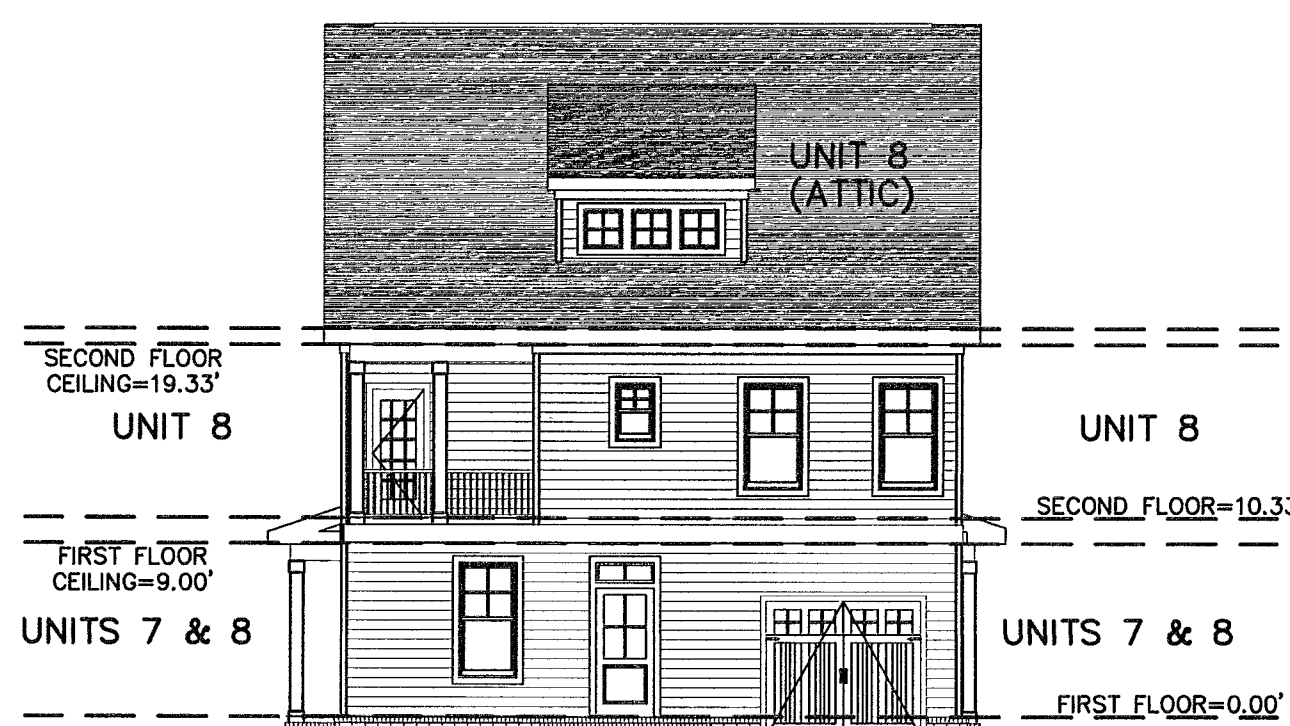
MAINSTAY AT
COMMONWEALTH GREEN
SECTION ONE

BETHEL MAGISTERIAL DISTRICT
COUNTY OF YORK, VIRGINIA
SCALE: 1"=10' DATE: NOVEMBER 12, 2018
SHEET 7 OF 7

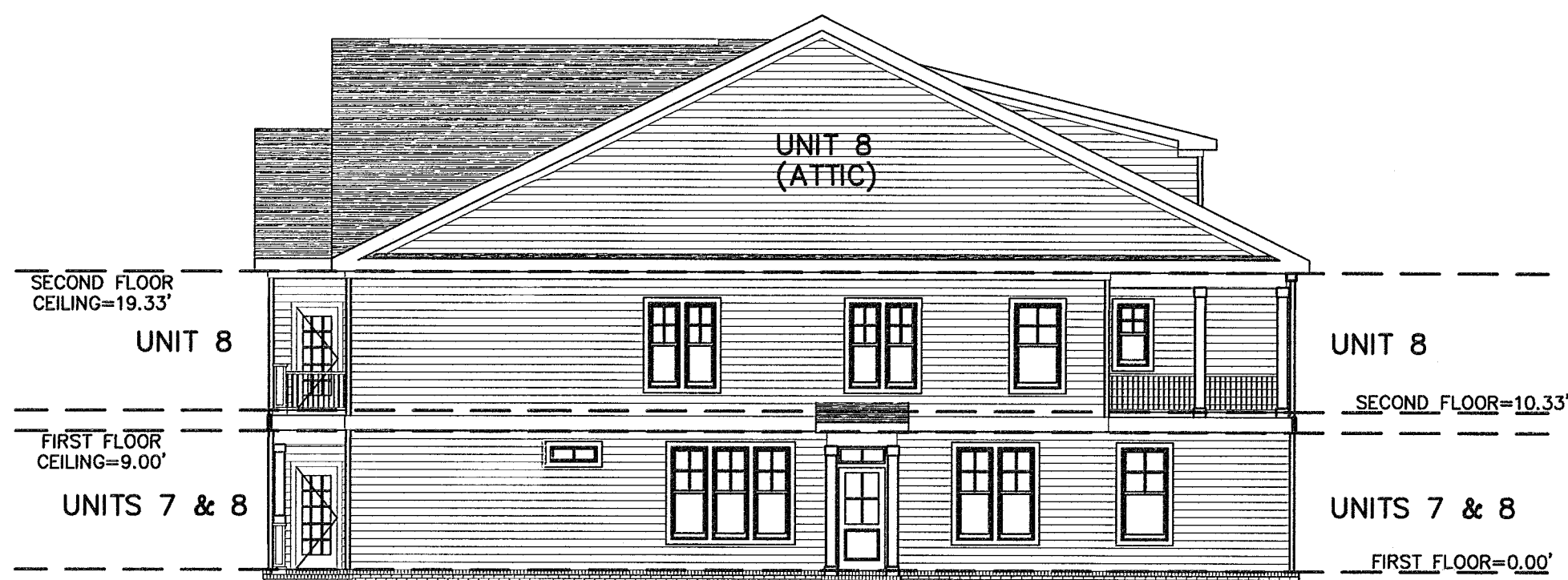
DAVIS & ASSOCIATES, P.C.
LAND SURVEYORS AND PLANNERS
3630 GEORGE WASHINGTON MEMORIAL HIGHWAY
YORKTOWN, VIRGINIA 23693
(757)867-8583



FRONT ELEVATION
(PUBLIC STREET SIDE)



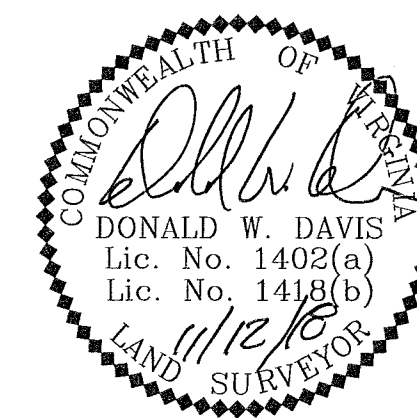
REAR ELEVATION
(PRIVATE LANE SIDE)



RIGHT SIDE ELEVATION



LEFT SIDE ELEVATION



APPROVED
YORK COUNTY BOARD OF SUPERVISORS
BY: Jason Kasal
PLAT APPROVING AGENT
DATE: JUNE 12, 2019

STATE OF VIRGINIA
COUNTY OF YORK
IN THE CLERK'S OFFICE OF THE YORK -
POQUOSON CIRCUIT COURT THIS 13th
DAY OF June 2019, THIS MAP WAS
PRESENTED AND ADMITTED TO RECORD AS
THE LAW DIRECTS AS INSTRUMENT # 190008852

TESTE: Kristen N. Nelson
CLERK
BY: Christina Webster-Cobey P.C.