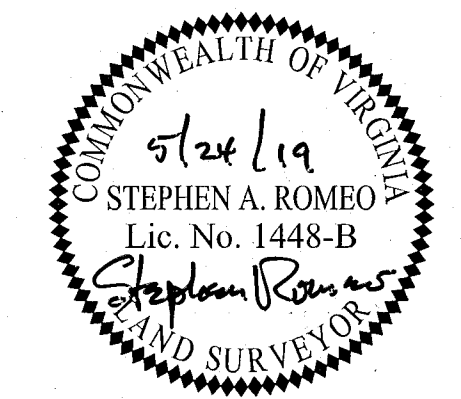
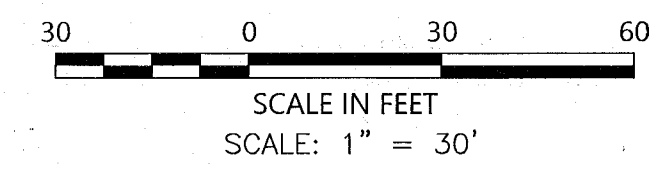
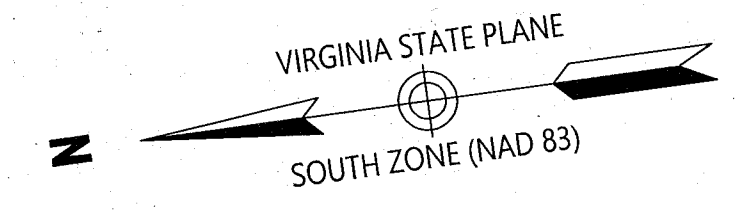


MARQUIS HILLS PHASE 1
BEING A
RESUBDIVISION OF PARCEL 12A
PROPERTY OF
MARQUIS SINGLE FAMILY
DEVELOPER, LLC.

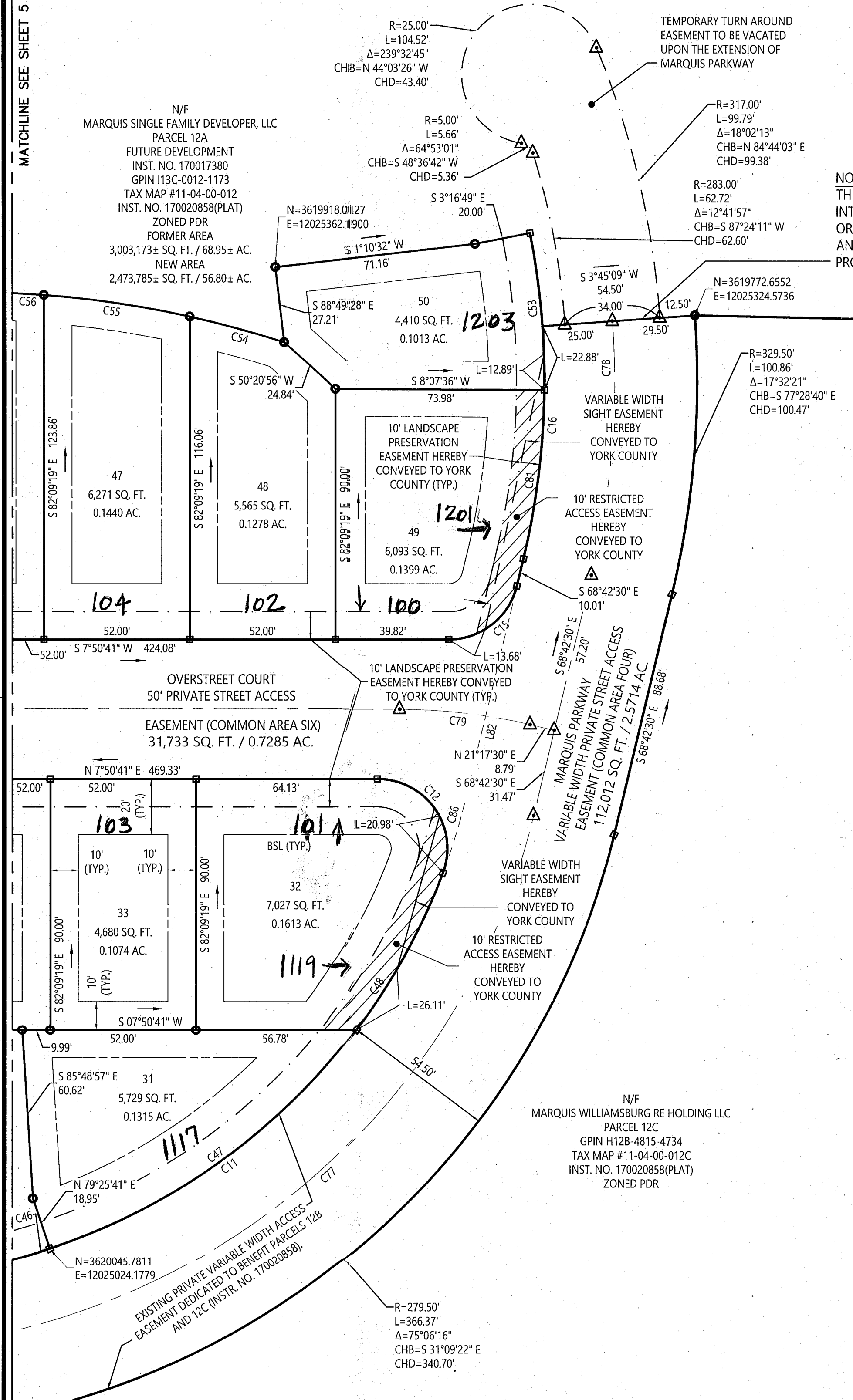
BRUTON DISTRICT, YORK COUNTY, VIRGINIA
DATE: 5/24/2019
SHEET 6 OF 7



351 McLaws Circle, Suite 3
Williamsburg, Virginia 23185
757 220 0500 • FAX 757 903 2794

NOTE:
THIS RIGHT-OF-WAY IS PLATTED WITH THE
INTENT OF BEING EXTENDED AND CONTINUED IN
ORDER TO PROVIDE INGRESS AND EGRESS TO
AND FROM FUTURE SUBDIVISIONS OR ADJACENT
PROPERTY

LINE TABLE			LINE TABLE			LINE TABLE		
LINE	BEARING	DISTANCE	LINE	BEARING	DISTANCE	LINE	BEARING	DISTANCE
L1	S42°39'44"E	69.30	L37	S11°40'23"W	27.67	L73	S0°18'04"W	20.63
L2	S3°01'40"E	8.08	L38	S9°06'11"E	23.18	L74	S7°49'44"E	21.43
L3	S3°01'40"E	140.18	L39	S49°39'02"W	11.52	L75	S11°57'42"E	14.29
L4	S3°01'40"E	111.96	L40	N23°02'24"W	13.05	L76	S17°17'34"E	14.42
L5	S64°54'46"E	21.91	L41	N8°50'07"E	45.17	L77	S1°55'33"E	23.47
L6	S25°05'14"W	20.00	L42	N23°45'32"W	19.24	L78	S17°04'11"W	7.65
L7	N64°54'46"W	33.90	L43	N11°41'00"W	29.99	L79	S6°45'54"W	17.31
L8	N3°01'40"W	121.86	L44	N17°04'11"E	26.09	L80	S13°43'42"E	30.76
L9	N3°01'40"W	50.26	L45	N2°11'02"E	34.82	L81	S25°32'04"E	25.62
L10	N3°01'40"W	43.14	L46	N41°33'36"W	20.05	L82	S68°42'30"E	78.67
L11	N3°01'40"W	49.74	L47	N0°18'04"E	48.89			
L12	N42°39'44"W	22.16	L48	N6°33'52"W	42.74			
L13	N42°39'44"W	41.33	L49	N28°22'40"E	20.53			
L14	N81°35'11"W	82.59	L50	N38°17'03"W	25.75			
L15	N21°49'15"E	1.66	L51	N25°53'32"W	22.64			
L16	N21°49'15"E	120.51	L52	N3°55'02"E	38.97			
L17	S68°43'31"E	20.00	L53	N22°48'43"W	58.38			
L18	S21°49'15"W	97.03	L54	N83°16'16"W	31.12			
L19	S81°35'11"E	69.24	L55	S33°19'00"W	18.49			
L20	S81°18'26"E	37.77	L56	S54°33'40"W	15.31			
L21	S10°59'49"W	51.43	L57	S89°00'17"W	28.50			
L22	S37°11'07"W	41.30	L58	S7°24'03"W	26.69			
L23	S9°29'41"E	33.68	L59	S86°01'49"W	18.97			
L24	S11°49'11"W	63.77	L60	N41°59'26"W	16.21			
L25	S33°56'29"E	36.65	L61	N87°51'29"E	25.55			
L26	S4°13'22"W	58.83	L62	N2°14'12"E	18.38			
L27	S22°14'25"E	18.51	L63	N57°51'14"E	10.07			
L28	S39°12'53"E	13.21	L64	S82°13'00"E	23.55			
L29	S39°12'53"E	10.51	L65	N43°14'47"E	35.98			
L30	S8°24'24"E	35.50	L66	N43°14'46"E	19.52			
L31	S9°33'28"W	43.05	L67	N27°02'19"E	40.73			
L32	S12°05'46"W	37.11	L68	N15°37'17"E	46.58			
L33	S64°20'32"E	11.72	L69	N18°54'59"E	32.67			
L34	S8°35'46"E	36.34	L70	N34°11'26"E	19.89			
L35	S13°21'56"W	37.15	L71	N21°15'01"W	30.26			
L36	S17°22'25"E	47.12	L72	S6°58'43"E	21.51			



MATCHLINE SEE SHEET 5

APPROVED:
YORK COUNTY BOARD OF SUPERVISORS
BY: *Jessie Kassel*
PLAT APPROVING AGENT
DATE: **JUNE 17, 2019**

STATE OF VIRGINIA, COUNTY OF YORK
IN THE CLERK'S OFFICE OF THE CIRCUIT COURT FOR THE
COUNTY OF YORK-POQUOSON THE *14th* DAY OF
June 2019, THIS MAP WAS PRESENTED AND
ADMITTED TO RECORD AS THE LAW DIRECTS AS
INSTRUMENT NO. **190009200**
TESTE: *Kristen A. Nelson, clerk*
CLERK
BY: *Tracey R. De*