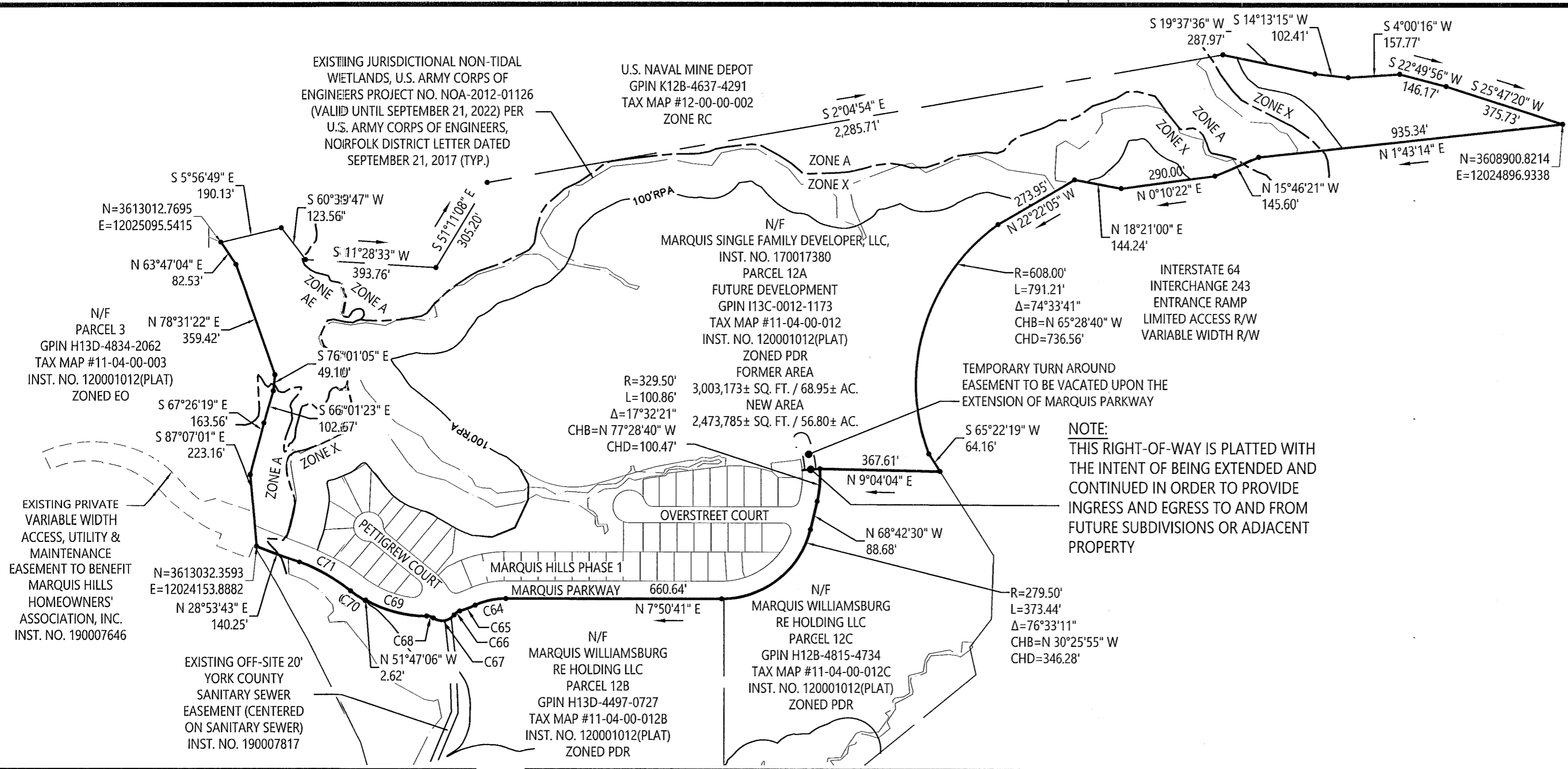
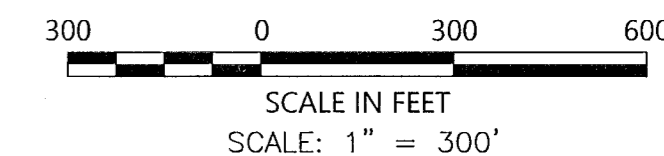
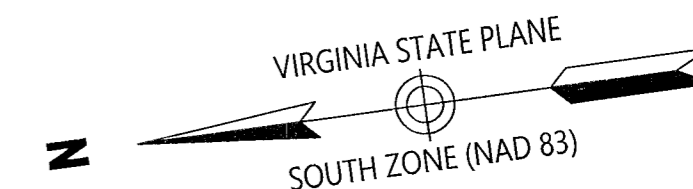


MARQUIS HILLS PHASE 1
 BEING A
RESUBDIVISION OF PARCEL 12A
 PROPERTY OF
MARQUIS SINGLE FAMILY DEVELOPER, LLC.

BRUTON DISTRICT, YORK COUNTY, VIRGINIA
 DATE: 5/24/2019
 SHEET 7 OF 7



CURVE TABLE						
NUMBER	RADIUS	LENGTH	DELTA	TANGENT	CHORD BEARING	CHORD
C1	625.00'	193.12'	17°42'15"	97.34'	S37°44'50"W	192.35'
C2	308.00'	164.50'	30°36'05"	84.26'	S3°11'17"55"W	162.55'
C3	30.00'	77.83'	148°38'36"	106.88'	S58°19'26"E	57.77'
C4	35.00'	21.78'	35°39'33"	11.26'	N29°31'30"E	21.43'
C5	45.00'	205.95'	262°13'36"	51.56'	S37°11'29"E	67.81'
C6	35.00'	28.45'	46°34'03"	15.06'	S70°38'17"W	27.67'
C7	225.00'	75.53'	19°14'00"	38.12'	S56°58'16"W	75.18'
C8	25.00'	34.07'	78°05'34"	20.28'	S27°32'29"W	31.50'
C9	308.00'	29.78'	5°32'26"	14.90'	S14°16'31"E	29.77'
C10	275.00'	119.46'	24°53'24"	60.69'	S4°36'01"E	118.53'
C11	225.00'	272.98'	69°30'46"	156.12'	S26°54'42"E	256.54'
C12	25.00'	48.21'	110°29'14"	36.03'	N63°05'18"E	41.08'
C13	50.00'	218.63'	250°31'44"	70.71'	S46°53'27"E	81.65'
C14	25.00'	30.77'	70°31'44"	17.68'	S43°06'33"W	28.87'
C15	25.00'	33.40'	76°33'11"	19.73'	S30°25'55"E	30.97'
C16	275.00'	117.94'	24°34'19"	59.89'	S80°59'40"E	117.04'
C17	308.00'	54.24'	10°05'23"	27.19'	N31°05'14"E	54.17'
C18	308.00'	52.38'	9°44'41"	26.26'	N41°00'16"E	52.32'
C19	308.00'	3.88'	0°43'20"	1.94'	N46°14'17"E	3.88'
C20	625.00'	48.19'	4°25'05"	24.11'	N44°23'24"E	48.18'
C21	35.00'	11.86'	19°25'08"	5.99'	S37°38'42"W	11.81'
C22	35.00'	9.92'	16°14'24"	4.99'	S19°48'55"W	9.89'
C23	45.00'	45.44'	57°51'17"	24.87'	S40°37'22"W	43.53'
C24	625.00'	52.47'	4°48'38"	26.25'	N39°46'33"E	52.46'
C25	625.00'	55.16'	5°03'24"	27.60'	N34°50'32"E	55.14'
C26	45.00'	18.93'	24°06'07"	9.61'	S8°13'04"W	18.79'
C27	45.00'	31.26'	39°48'01"	16.29'	N66°26'52"W	30.63'
C28	45.00'	22.32'	28°24'50"	11.39'	N32°20'26"W	22.09'

CURVE TABLE						
NUMBER	RADIUS	LENGTH	DELTA	TANGENT	CHORD BEARING	CHORD
C29	45.00'	22.34'	28°26'22"	11.40'	N3°54'50"W	22.11'
C30	45.00'	28.59'	36°24'22"	14.80'	N28°30'32"E	28.11'
C31	45.00'	37.08'	47°12'36"	19.66'	N70°19'01"E	36.04'
C32	35.00'	11.15'	18°15'21"	5.62'	N84°47'38"E	11.10'
C33	35.00'	17.29'	28°18'42"	8.83'	N61°30'37"E	17.12'
C34	225.00'	10.53'	2°40'51"	5.26'	N48°41'42"E	10.53'
C35	225.00'	10.00'	2°32'46"	5.00'	N51°18'30"E	10.00'
C36	225.00'	55.00'	14°00'23"	27.64'	N59°35'05"E	54.87'
C37	275.00'	14.58'	3°02'13"	7.29'	N15°31'37"W	14.57'
C38	275.00'	50.00'	10°25'03"	25.07'	N8°47'59"W	49.93'
C39	275.00'	50.00'	10°25'03"	25.07'	N1°37'03"E	49.93'
C40	275.00'	4.89'	1°01'06"	2.44'	N7°20'08"E	4.89'
C41	365.00'	19.35'	3°02'13"	9.68'	S15°31'37"E	19.34'
C42	365.00'	66.36'	10°25'03"	33.27'	S8°47'59"E	66.27'
C43	365.00'	66.36'	10°25'03"	33.27'	S1°37'03"W	66.27'
C44	365.00'	6.49'	1°01'06"	3.24'	S7°20'08"W	6.49'
C45	225.00'	15.22'	3°52'31"	7.61'	N5°54'25"E	15.22'
C46	225.00'	57.10'	14°32'29"	28.71'	N3°18'05"W	56.95'
C47	225.00'	136.32'	34°42'49"	70.32'	N27°55'43"W	134.24'
C48	225.00'	64.33'	16°22'57"	32.39'	N53°28'36"W	64.12'
C49	50.00'	18.29'	20°57'21"	9.25'	S18°19'21"W	18.19'
C50	50.00'	12.64'	14°29'04"	6.35'	N71°07'52"E	12.61'
C51	25.00'	30.77'	70°31'44"	17.68'	N43°06'33"E	28.87'
C53	275.00'	56.63'	11°47'58"	28.42'	N87°22'50"W	56.53'
C54	365.00'	34.96'	5°29'15"	17.49'	S23°14'58"W	34.94'
C55	365.00'	52.63'	8°15'40"	26.36'	S16°22'31"W	52.58'
C56	365.00'	52.04'	8°10'11"	26.07'	S8°09'35"W	52.00'
C57	365.00'	14.28'	2°14'30"	7.14'	N1°58'50"E	14.28'

CURVE TABLE						
NUMBER	RADIUS	LENGTH	DELTA	TANGENT	CHORD BEARING	CHORD
C58	365.00'	20.52'	3°13'18"	10.26'	S2°27'51"W	20.52'
C59	250.00'	219.61'	50°19'48"	117.45'	S16°45'30"W	212.61'
C60	261.54'	33.25'	7°17'07"	16.65'	S3°32'04"W	33.23'
C61	50.00'	187.70'	215°05'18"	158.15'	N43°39'19"W	95.35'
C62	308.00'	54.00'	10°02'40"	27.07'	S21°01'12"W	53.93'
C63	365.00'	158.56'	24°53'24"	80.55'	N4°36'01"W	157.32'
C64	220.50'	95.79'	24°53'24"	48.66'	N4°36'01"W	95.04'
C65	362.50'	50.98'	8°03'26"	25.53'	N13°01'00"W	50.94'
C66	34.50'	20.97'	34°49'48"	10.82'	N26°24'11"W	20.65'
C67	47.50'	71.16'	85°49'47"	44.16'	N0°54'11"W	64.69'
C68	34.50'	20.97'	34°49'48"	10.82'	N24°35'48"E	20.65'
C69	362.50'	196.34'	31°01'59"	100.64'	N22°41'54"E	193.95'
C70	365.12'	53.43'	8°23'03"	26.76'	N42°24'25"E	53.38'
C71	567.88'	175.47'	17°42'14"	88.44'	N37°44'50"E	174.77'
C72	624.99'	37.29'	3°25'07"	18.65'	S30°36'16"W	37.29'
C73	600.00'	185.40'	17°42'14"	93.44'	S37°44'50"W	184.66'
C74	333.00'	292.89'	50°23'40"	156.68'	S21°24'07"W	283.54'
C75	333.00'	77.01'	13°15'01"	38.68'	S10°25'13"E	76.84'
C76	250.00'	108.60'	24°53'24"	55.17'	S4°36'01"E	107.75'
C77	250.00'	334.03'	76°33'11"	197.27'	S30°25'55"E	309.73'
C78	300.00'	91.83'	17°32'21"	46.28'	S77°28'40"E	91.48'
C79	200.00'	46.94'	13°26'49"	23.58'	N14°34'05"E	46.83'
C80	200.00'	104.11'	29°49'30"	53.26'	N62°16'01"E	102.94'
C81	275.00'	61.30'	12°46'21"	30.78'	N75°05'40"W	61.18'
C85	308.00'	147.84'	27°30'10"	75.38'	S2°14'47"W	146.43'
C86	225.00'	27.64'	7°02'23"	13.84'	S65°11'16"E	27.63'



vhb Transportation Land Development Environmental Services
 351 McLaws Circle, Suite 3
 Williamsburg, Virginia 23185
 757 220 0500 • FAX 757 903 2794

APPROVED:
 YORK COUNTY BOARD OF SUPERVISORS
 BY: *Susan Kassel*
 PLAT APPROVING AGENT
 DATE: **JUNE 17, 2019**

STATE OF VIRGINIA, COUNTY OF YORK
 IN THE CLERK'S OFFICE OF THE CIRCUIT COURT FOR THE COUNTY OF YORK-POQUOSON THE 10th DAY OF June 2019, THIS MAP WAS PRESENTED AND ADMITTED TO RECORD AS THE LAW DIRECTS AS INSTRUMENT NO. **190009800**
 TESTE: *Kristen A. Nelson, clerk*
 CLERK
 BY: *Frank By DC*

C:\Users\jw\Documents\190009800.dwg