

CURVE TABLE						
CURVE #	DELTA	RADIUS	LENGTH	TANGENT	CHORD	CHORD BEARING
C1	36°47'22"	428.37'	275.06'	142.46'	270.35'	N14°22'56"W
C2	20°41'53"	428.37'	154.75'	78.23'	153.91'	N22°25'40"W
C3	15°09'53"	428.37'	113.38'	57.02'	113.05'	S4°29'47"E
C4	0°55'36"	428.37'	6.93'	3.46"	6.93'	N3°32'57"E
C5	41°59'28"	488.37'	357.92'	187.42'	349.96'	N16°58'56"W

LINE TABLE		
LINE	BEARING	LENGTH
L1	S30°56'17"E	12.00'
L2	N30°56'17"W	12.00'
L3	N37°40'24"W	15.64'
L4	S37°40'48"E	15.47'
L5	S59°03'43"W	1.11'
L6	N30°56'17"W	37.00'
L7	S30°56'17"E	37.00'
L8	N37°33'20"W	2.20'
L9	S37°33'20"E	17.28'
L10	S59°03'43"W	1.89'

LINE TABLE		
LINE	BEARING	LENGTH
L11	N59°03'43"E	28.84'
L12	N56°55'23"E	13.55'
L13	N54°51'06"E	42.03'
L14	N52°26'40"E	3.00'
L15	N54°51'05"E	41.41'
L16	N37°33'20"W	3.46'
L17	N54°51'05"E	22.26'
L18	N30°56'17"W	34.89'
L19	N52°26'40"E	35.05'

LEGEND

- EASEMENT
- RIGHT-OF-WAY
- PARCEL LINE
- ADJACENT PROPERTY LINE
- BUILDING SETBACK
- OHE --- OVERHEAD ELECTRIC LINE
- * * FENCE
- POWER POLE
- ⊕ LIGHT POLE
- IRF IRON ROD FOUND
- AF AXLE FOUND
- PROPERTY CORNER SET
- BSL BUILDING SETBACK LINE
- CONCRETE MONUMENT SET



PLAT OF SUBDIVISION
KELTON STATION

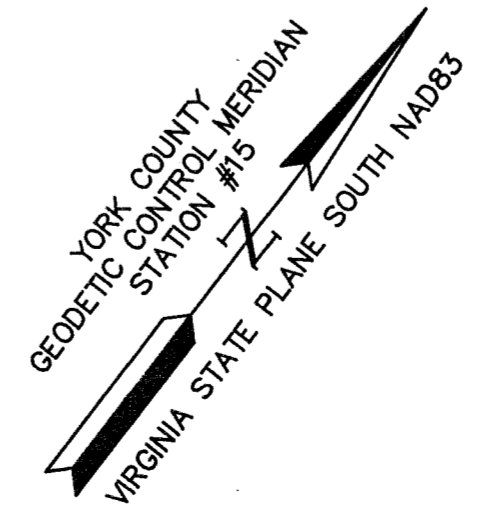
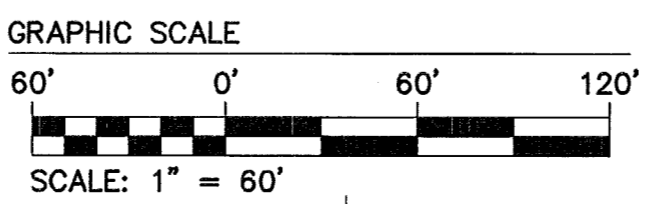
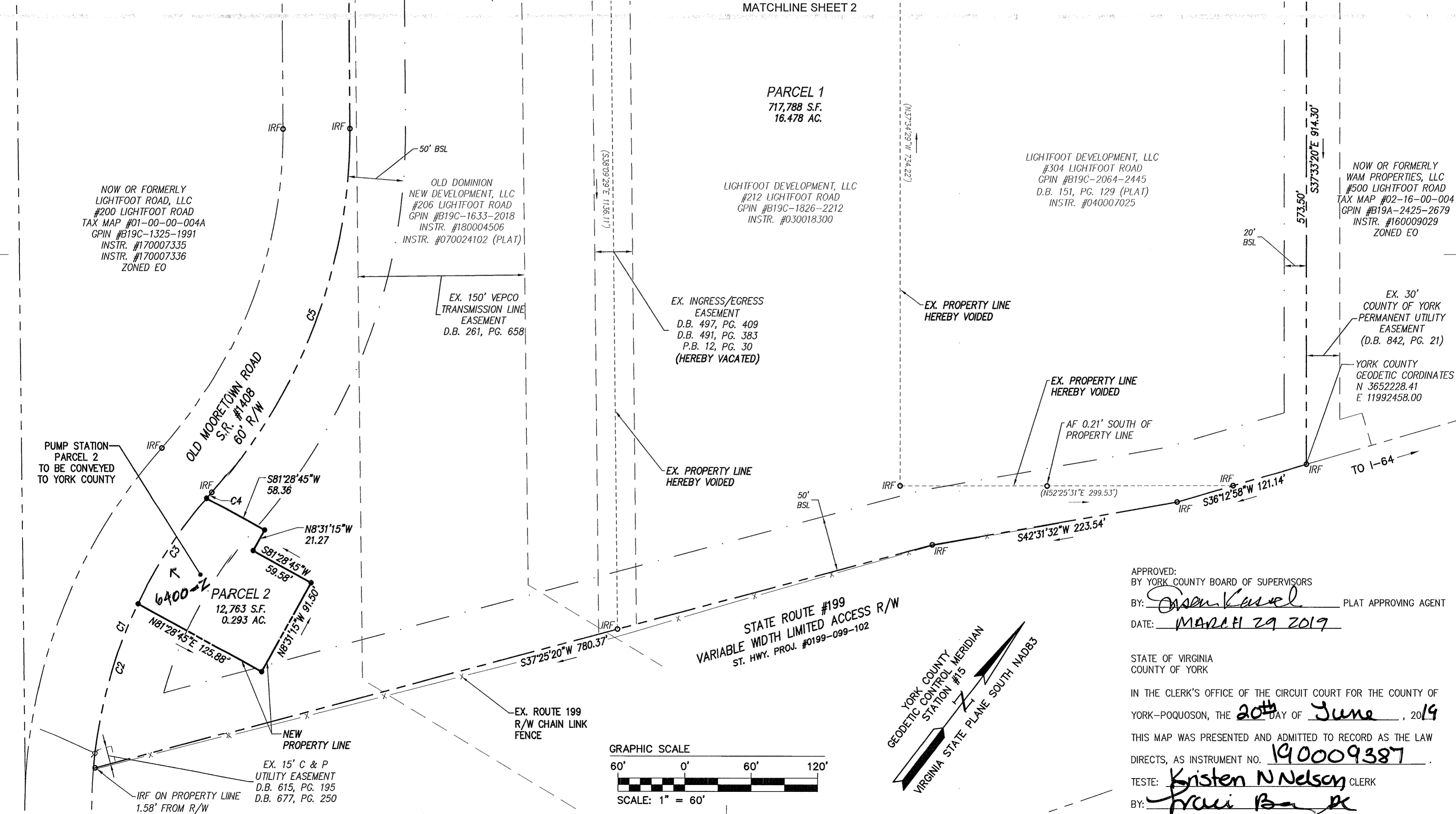
BRUTON DISTRICT YORK COUNTY VIRGINIA
 Date: 06/12/18 Scale: 1"=60' Proj. No.: W10528-00 Proj. Contacts: SJB/JFS

AES
CONSULTING ENGINEERS
 5248 Olde Towne Road, Suite 1
 Williamsburg, Virginia 23188
 Phone: (757) 253-0040
 Fax: (757) 220-8994
 www.aesva.com

SHEET 3 OF 4

NOTE:
SEE SHEET 2 FOR REMAINING CURVE TABLE.

NOTE:
SEE SHEET 4 FOR PROPOSED RESTRICTED ACCESS EASEMENTS, PROPOSED VARIABLE WIDTH SIGHT EASEMENTS, AND PROPOSED LANDSCAPE PRESERVATION EASEMENTS CONVEYED TO YORK COUNTY BY RECORDATION OF THIS PLAT AND THE RECORDATION OF THE ASSOCIATED DEED OF EASEMENT AND SUBORDINATION AGREEMENT.



APPROVED:
BY YORK COUNTY BOARD OF SUPERVISORS
 BY: Jason Kassel PLAT APPROVING AGENT
 DATE: MARCH 29 2019

STATE OF VIRGINIA
 COUNTY OF YORK

IN THE CLERK'S OFFICE OF THE CIRCUIT COURT FOR THE COUNTY OF YORK-POQUOSON, THE 20th DAY OF June, 2019

THIS MAP WAS PRESENTED AND ADMITTED TO RECORD AS THE LAW DIRECTS, AS INSTRUMENT NO. 190009387

TESTE: Kristen N Nelson CLERK
 BY: Travis B...