

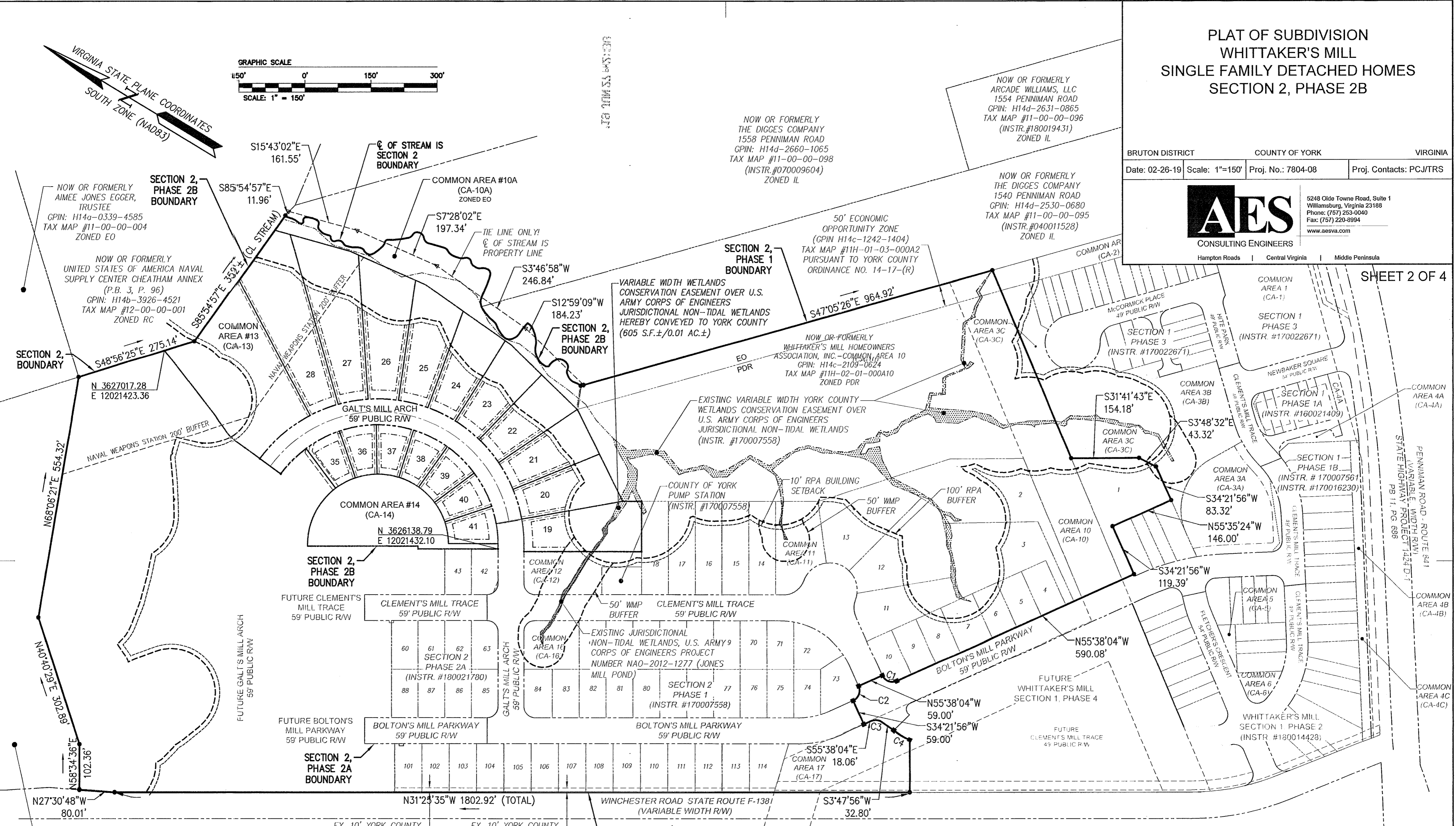
PLAT OF SUBDIVISION WHITTAKER'S MILL SINGLE FAMILY DETACHED HOMES SECTION 2, PHASE 2B

BRUTON DISTRICT COUNTY OF YORK VIRGINIA
Date: 02-26-19 Scale: 1"=150' Proj. No.: 7804-08 Proj. Contacts: PCJ/TRS

5248 Old Towne Road, Suite 1
Williamsburg, Virginia 23188
Phone: (757) 258-0040
Fax: (757) 220-8994
www.aesva.com

Hampton Roads | Central Virginia | Middle Peninsula

SHEET 2 OF 4



NOW OR FORMERLY CIVIL WAR PRESERVATION TRUST
GPIN: H14a-0310-2754
TAX MAP #11-00-16-002B
ZONED EO

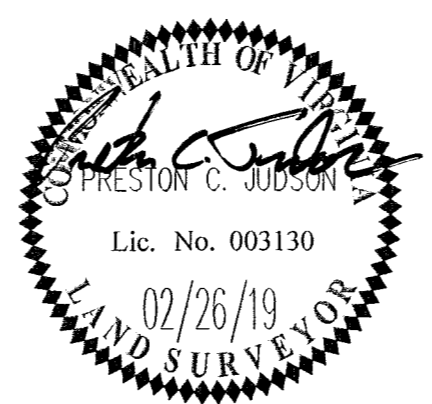
NOW OR FORMERLY CIVIL WAR PRESERVATION TRUST
101 WINCHESTER ROAD
TAX MAP #11-16-00-002A,
GPIN NO.: H14c-0514-1246
(INSTR. #150023134)
ZONED EO

EX. 10' YORK COUNTY RESTRICTED ACCESS EASEMENT
(INSTR. #180021780)

EX. 10' YORK COUNTY RESTRICTED ACCESS EASEMENT
(INSTR. #170007558)

EX. 100' VEPCO EASEMENT
(DB 58, PG. 571)

CURVE #	DELTA	RADIUS	LENGTH	TANGENT	CHORD	CHORD BEARING
C1	90°00'00"	25.00'	39.27'	25.00'	35.36'	N10°38'04"W
C2	90°00'00"	25.00'	39.27'	25.00'	35.36'	S79°21'56"W
C3	59°26'00"	25.00'	25.93'	14.27'	24.79'	S25°55'04"E
C4	10°46'11"	224.50'	42.20'	21.16'	42.14'	S1°35'10"E



LEGEND

- PROPERTY LINE
- RIGHT-OF-WAY LINE
- BUILDING SETBACK LINE
- DRAINAGE EASEMENT
- SIGHT EASEMENT
- PRIVATE UTILITY EASEMENT
- CMF CONCRETE MONUMENT FOUND
- IRF IRON ROD FOUND
- MONUMENT SET (PER SECTION 2, PHASE 1 PLAT)
- CONCRETE MONUMENT SET
- IRON ROD SET
- RPA RESOURCE PROTECTION AREA
- WMP WATERSHED MANAGEMENT AND PROTECTION AREA OVERLAY DISTRICT

APPROVED:
YORK COUNTY BOARD OF SUPERVISORS
BY: *[Signature]* PLAT APPROVING AGENT
DATE: JUNE 26, 2019

STATE OF VIRGINIA
COUNTY OF YORK
IN THE CLERK'S OFFICE OF THE CIRCUIT COURT FOR THE COUNTY OF YORK-POQUOSON THE 27th DAY OF June, 2019
THIS MAP WAS PRESENTED AND ADMITTED TO RECORD AS THE LAW DIRECTS, AS INSTRUMENT NO. 190009783
TESTE: *[Signature]* CLERK
BY: *[Signature]*