

PHASE FIVE – BUILDING SIX DETAIL

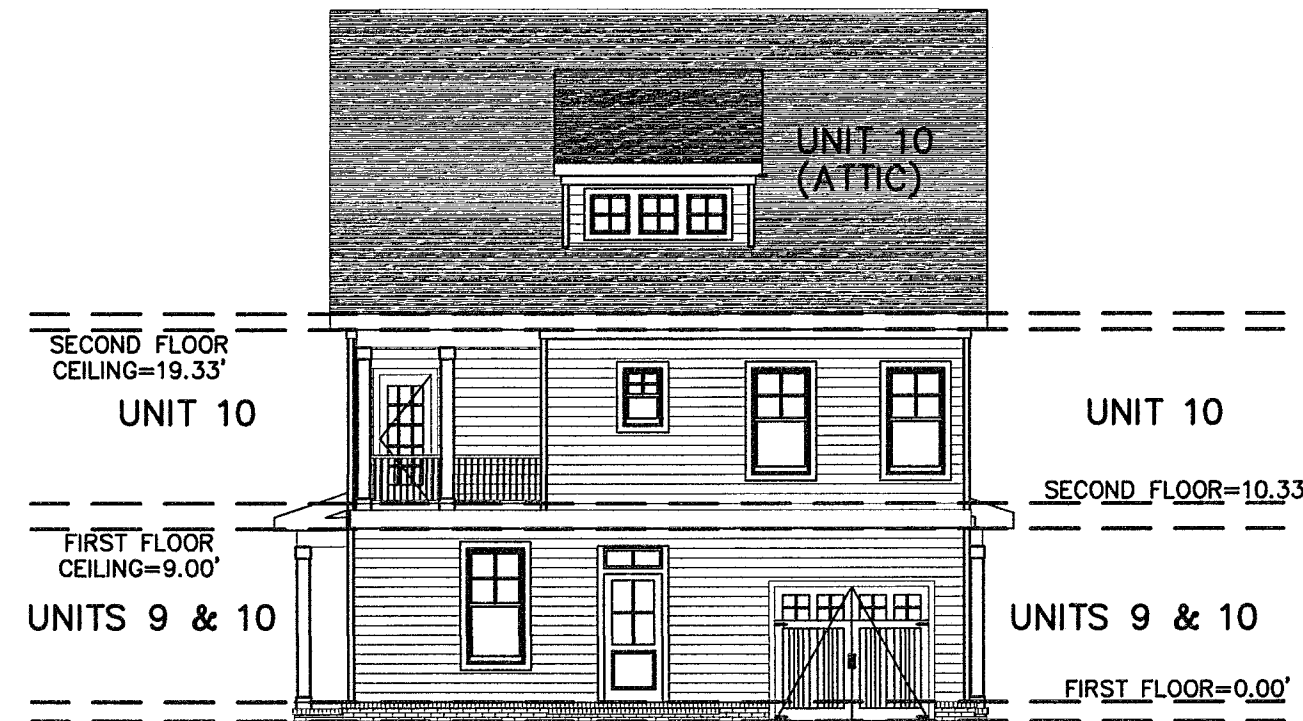
CONDOMINIUM PLAT  
OF  
PHASE FIVE  
MAINSTAY AT  
COMMONWEALTH GREEN  
SECTION ONE

BETHEL MAGISTERIAL DISTRICT  
COUNTY OF YORK, VIRGINIA  
SCALE: 1"=10' DATE: JUNE 13, 2019  
SHEET 7 OF 7

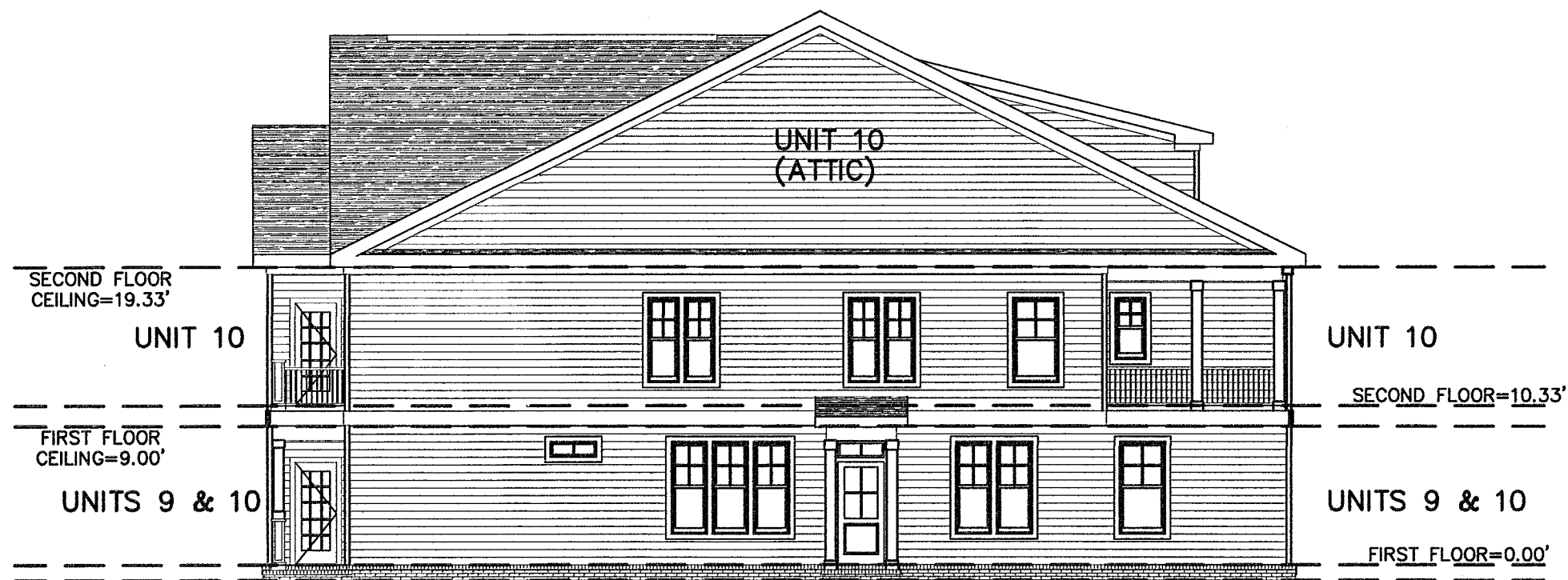
DAVIS & ASSOCIATES, P.C.  
LAND SURVEYORS AND PLANNERS  
3630 GEORGE WASHINGTON MEMORIAL HIGHWAY  
YORKTOWN, VIRGINIA 23693  
(757)867-8583



FRONT ELEVATION  
(PUBLIC STREET SIDE)



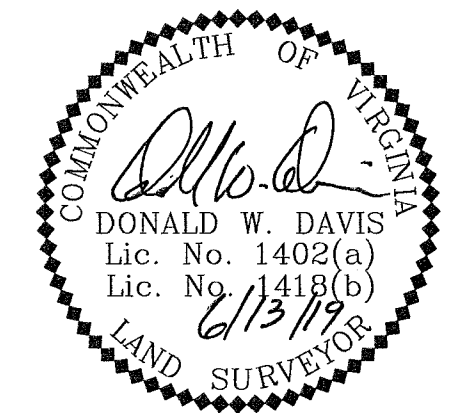
REAR ELEVATION  
(PRIVATE LANE SIDE)



RIGHT SIDE ELEVATION



LEFT SIDE ELEVATION



APPROVED  
YORK COUNTY BOARD OF SUPERVISORS  
BY: Erin Wassel  
PLAT APPROVING AGENT  
DATE: JUNE 28, 2019

STATE OF VIRGINIA  
COUNTY OF YORK  
IN THE CLERK'S OFFICE OF THE YORK  
POQUOSON CIRCUIT COURT THIS 28th  
DAY OF June 2019, THIS MAP WAS  
PRESENTED AND ADMITTED TO RECORD AS  
THE LAW DIRECTS AS INSTRUMENT # 190009908  
TESTE: Kristen N Nelson  
CLERK  
BY: Proci R. Jr