

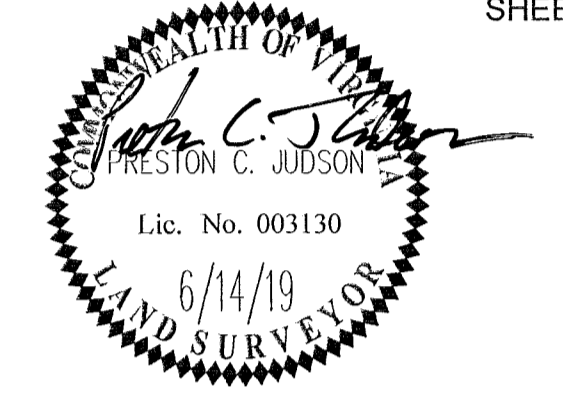
PLAT OF SUBDIVISION
ARBORDALE, PHASE IIB

BRUTON DISTRICT
YORK COUNTY, VIRGINIA

Date: 6/14/19 Scale: 1"=30' Proj. No.: W10466-00 Proj. Contacts: JAG/PCJ

AES
CONSULTING ENGINEERS
5248 Olde Towne Road, Suite 1
Williamsburg, Virginia 23188
Phone: (757) 253-0040
Fax: (757) 220-8994
www.aesva.com
Hampton Roads | Central Virginia | Middle Peninsula

SHEET 5 OF 5

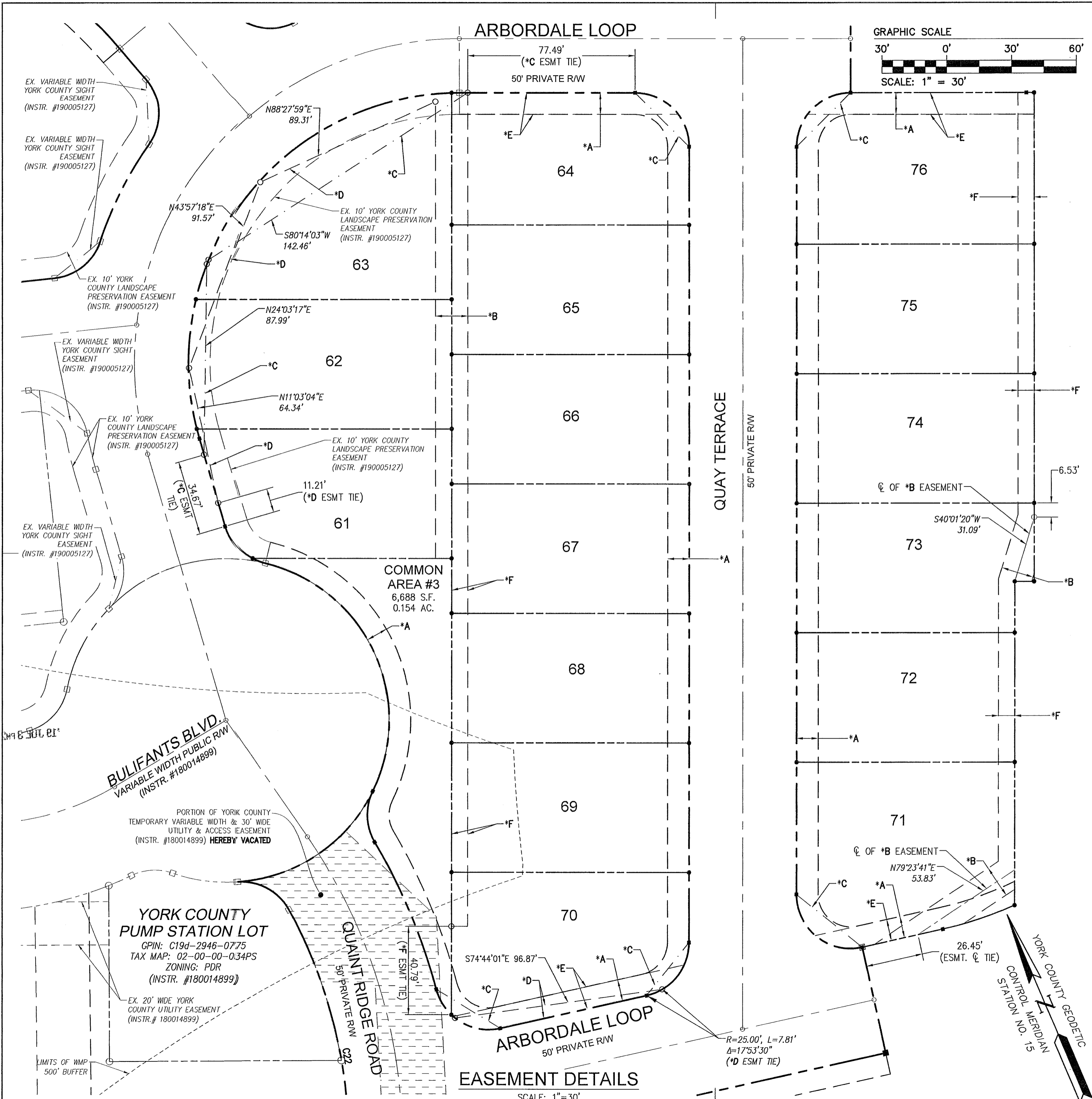


- EASEMENT LEGEND**
- *A - 10' LANDSCAPE PRESERVATION EASEMENT HEREBY CONVEYED TO YORK COUNTY
 - *B - 15' WIDE DRAINAGE EASEMENT HEREBY CONVEYED TO THE ARBORDALE HOMEOWNER'S ASSOCIATION
 - *C - VARIABLE WIDTH SIGHT EASEMENT HEREBY CONVEYED TO YORK COUNTY
 - *D - VARIABLE WIDTH DRAINAGE EASEMENT HEREBY CONVEYED TO THE ARBORDALE HOMEOWNER'S ASSOCIATION
 - *E - 10' RESTRICTED ACCESS EASEMENT HEREBY CONVEYED TO YORK COUNTY
 - *F - 7.5' WIDE DRAINAGE EASEMENT HEREBY CONVEYED TO THE ARBORDALE HOMEOWNER'S ASSOCIATION
 - *G - 10' WIDE DRAINAGE EASEMENT HEREBY CONVEYED TO THE ARBORDALE HOMEOWNER'S ASSOCIATION
 - *H - 5.5' WIDE DRAINAGE EASEMENT HEREBY CONVEYED TO THE ARBORDALE HOMEOWNER'S ASSOCIATION

= PORTION OF YORK COUNTY TEMPORARY VARIABLE WIDTH & 30' WIDE UTILITY & ACCESS EASEMENT (INSTR. #180014899) HEREBY VACATED

APPROVED:
BY YORK COUNTY BOARD OF SUPERVISORS
BY: Erin Kassel PLAT APPROVING AGENT
DATE: JULY 3 2019

STATE OF VIRGINIA
COUNTY OF YORK
IN THE CLERK'S OFFICE OF THE CIRCUIT COURT FOR THE COUNTY OF YORK-POQUOSON, THE 3rd DAY OF July, 2019
THIS MAP WAS PRESENTED AND ADMITTED TO RECORD AS THE LAW DIRECTS, AS INSTRUMENT NO. 190010109
TESTE: Kristen N Nelson CLERK
BY: Franky



EASEMENT DETAILS
SCALE: 1"=30'