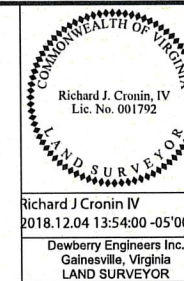




PROJECT MANAGER Janet Hedrick, P.E. - VDOT Hampton Roads District - (757)494-5478
SURVEYED BY, Dewberry Engineers Inc., 2/18
DESIGNED BY Dewberry Engineers Inc. - (703) 289-4796
SUBSURFACE UTILITY BY, Accumark, Inc., 3/18

RIGHT OF WAY PLAN



REVISED	STATE	ROUTE	PROJECT	SHEET NO.
	VA.	64	0064-965-229 R-201, C-501	7(1)RW

DESIGN FEATURES RELATING TO CONSTRUCTION OR TO REGULATION AND CONTROL OF TRAFFIC MAY BE SUBJECT TO CHANGE AS DEEMED NECESSARY BY THE DEPARTMENT

Richard J Cronin IV
2018.12.04 13:54:00 -05'00'
Dewberry Engineers Inc.
Gainesville, Virginia
LAND SURVEYOR

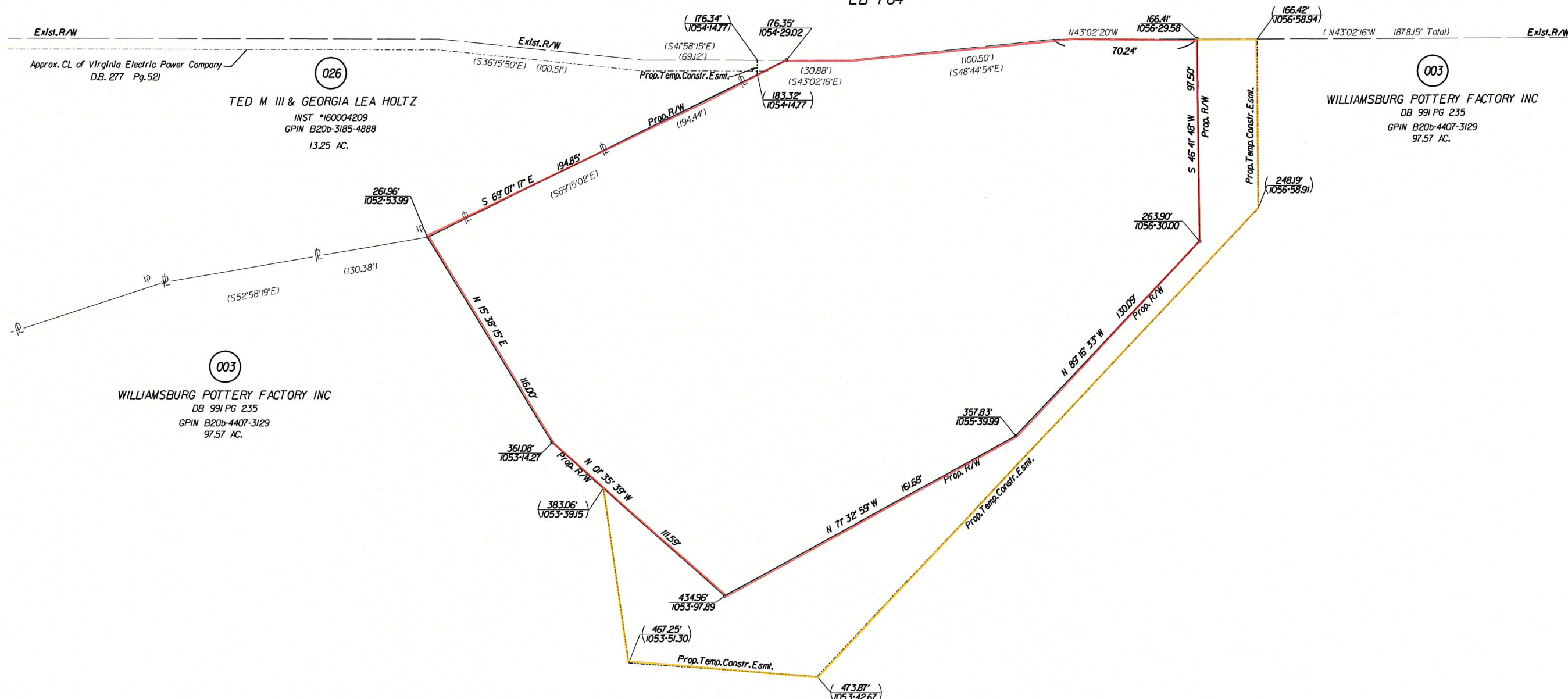
Station and Offset shown are based off Eastbound I-64 Centerline See Plan Sheet 7

VDOT Project Coordinates for the following Centerline Stations

Station 1052+00	N • 36596747245 E • 119941687980
Station 1057+00	N • 36593093811 E • 119945101544

Match Line - See Plan Sheet 7

EB I-64



003
WILLIAMSBURG POTTERY FACTORY INC
DB 991 PG 235
GPIN B20b-4407-3129
97.57 AC.

026
TED M III & GEORGIA LEA HOLT
INST *160004209
GPIN B20b-3185-4888
13.25 AC.

003
WILLIAMSBURG POTTERY FACTORY INC
DB 991 PG 235
GPIN B20b-4407-3129
97.57 AC.

Symbol Legend

- o R/W Monuments
- 00.00' Figures Without Any Notation Denote Right Of Way/Limited Access Line
- (00.00)' Figures In Parentheses And Dot - Dot - Dashed Lines Denote Temporary Easements
- [00.00]' Figures In Brackets And Dot - Dashed Lines Denote Permanent Easements
- {00.00}' Figures In Double Brackets and Dot - Dashed Lines Denote Utility Easements

- Notes
- This Right Of Way Sheet Represents A Field Run Survey Of The Proposed Right Of Way Limits. All Other Adjoining/Departing Boundary Lines Shown Are Compiled From Various Sources: Found Property Monumentation, Metes and Bounds, Descriptions And Record Plats. The Adjoining Lines Do Not Represent A Field Run Survey Of The Adjoining Properties And Are A Best Fit Based On Compiled Data.
 - All Of The Properties Physical Improvements Are Not Shown Hereon.
 - This Plan Sheet Was Prepared Without The Benefit Of A Title Report And May Not Show All Easements Which May Affect The Property Shown Hereon.
 - This Survey Datum Is Based On VDOT Project: 0064-965-229, R-201, UPC 106689.
 - Right Of Way Monumentation To Be Set Upon Completion Of Construction.
 - Bearings And Distances In Parentheses Are From Recorded Plats Or Deed Data.

Areas (Areas greater than or equal to 1 acre will be shown in acres to 3 decimal places (x.xxx). Areas less than 1 acre will be shown to square feet (x,xxx).)

Parcel No.	Property I.D. Number	Fee Taking	Perm. Eas.	Utility Eas.	Temp. Eas.	Temp. (Entrances) Eas.
		Acres Or Sq. Ft.	Acres or Sq. Ft.	Acres or Sq. Ft.	Acres or Sq. Ft.	Acres or Sq. Ft.
003	B20b-4407-3129	1.463			13,103	
026	B20b-3185-4888				50	