

INST.# 140006024

# PLAT OF BOUNDARY LINE ADJUSTMENT AND PROPERTY LINE VACATIONS ON PROPERTIES IN THE NAME OF YORK SQUIRE, LLC

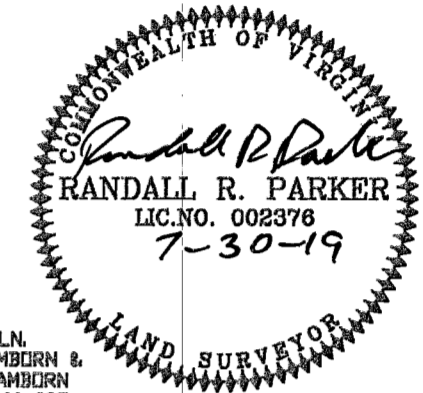
GRAFTON MAGISTERIAL DISTRICT  
YORK COUNTY, VIRGINIA

JUNE 4, 2019 SCALE: 1" = 40'

SHEET 2 of 3

**PARKER SURVEYING, INC.**

8858 MICHAEL LANE  
HAYES, VIRGINIA 23072  
PHONE: 804-884-0800



118 ANCHOR LN.  
N/F HENRY C. LAMBERN &  
PATRICIA ANN LAMBERN  
TAXMAP: 26D-01-00-005  
GPN: V07A-1590-4305  
ZONE: RR  
D.B.1041, PG.891



### LEGEND

- NEW PROPERTY LINE
- - - OLD PROPERTY LINE
- - - RPA, RESOURCE PROTECTION AREA
- EDGE OF WATER
- - - NEW EASEMENT LINE
- - - EXIST EASEMENT LINE
- IRS, IRON ROD SET
- x x FENCE
- - - FLOOD ZONE LINE

APPROVED  
YORK COUNTY BOARD OF SUPERVISORS

BY: *Erin Kasul*  
PLAT APPROVING AGENT

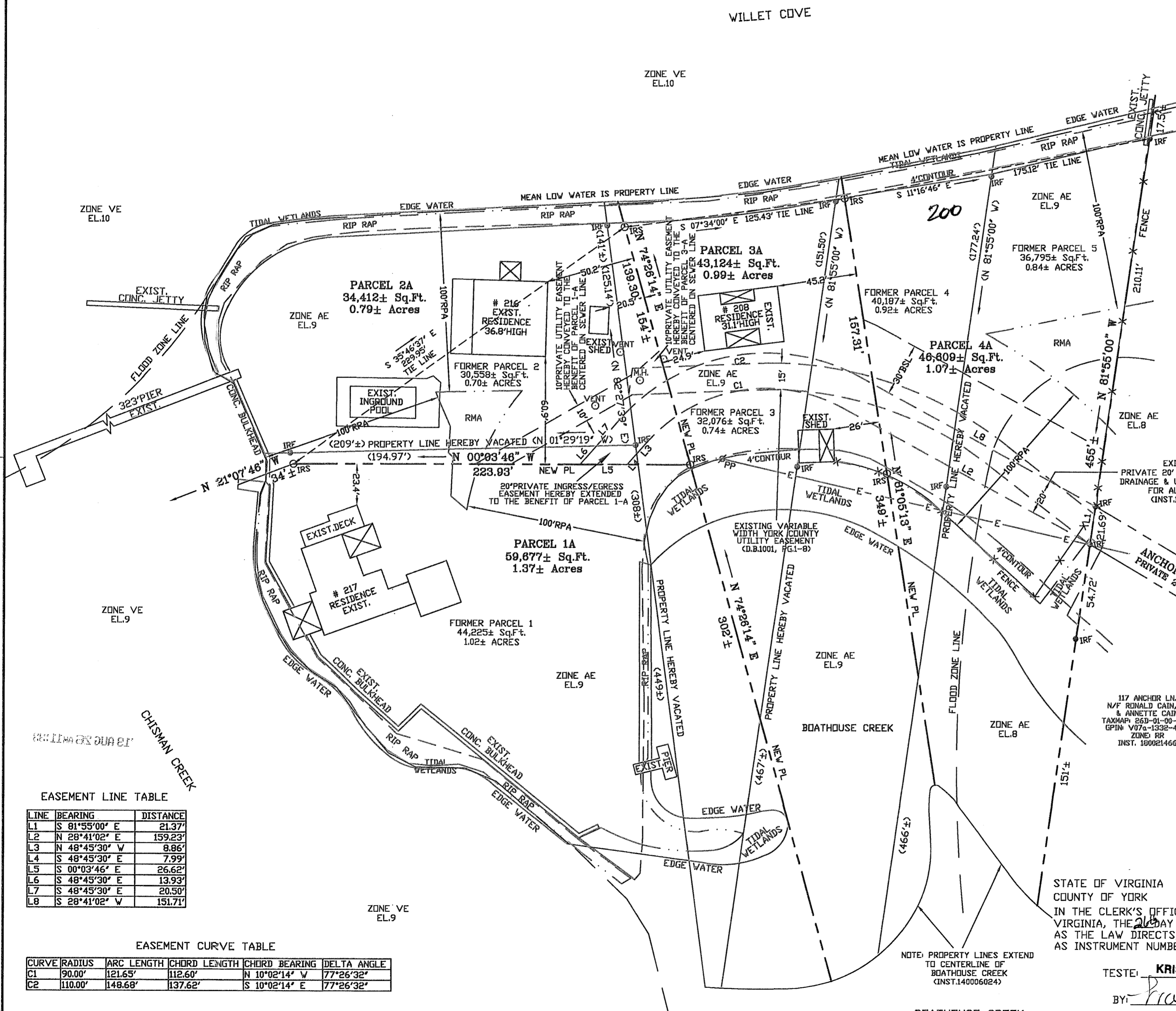
DATE: AUGUST 26, 2019

117 ANCHOR LN.  
N/F RONALD CAIN, JR  
& ANNETTE CAIN  
TAXMAP: 26D-01-00-003A  
GPN: V07A-1332-4319  
ZONE: RR  
INST. 180021466

STATE OF VIRGINIA  
COUNTY OF YORK  
IN THE CLERK'S OFFICE OF THE CIRCUIT COURT FOR THE COUNTY OF YORK-POQUOSON,  
VIRGINIA, THE 26th DAY of August 2019, THIS PLAT WAS PRESENTED AND ADMITTED TO RECORD  
AS THE LAW DIRECTS,  
AS INSTRUMENT NUMBER 190013343

TESTE: **KRISTEN N. NELSON, CLERK**  
CLERK

BY: *Frankly*



EASEMENT LINE TABLE

LINE	BEARING	DISTANCE
L1	S 81°55'00" E	21.37'
L2	N 28°41'02" E	159.23'
L3	N 48°45'30" W	8.86'
L4	S 48°45'30" E	7.99'
L5	S 00°03'46" E	26.62'
L6	S 48°45'30" E	13.93'
L7	S 48°45'30" E	20.50'
L8	S 28°41'02" W	151.71'

EASEMENT CURVE TABLE

CURVE	RADIUS	ARC LENGTH	CHORD LENGTH	CHORD BEARING	DELTA ANGLE
C1	90.00'	121.65'	112.60'	N 10°02'14" W	77°26'32"
C2	110.00'	148.68'	137.62'	S 10°02'14" E	77°26'32"