

PHASE TWELVE - BUILDING THIRTEEN DETAIL

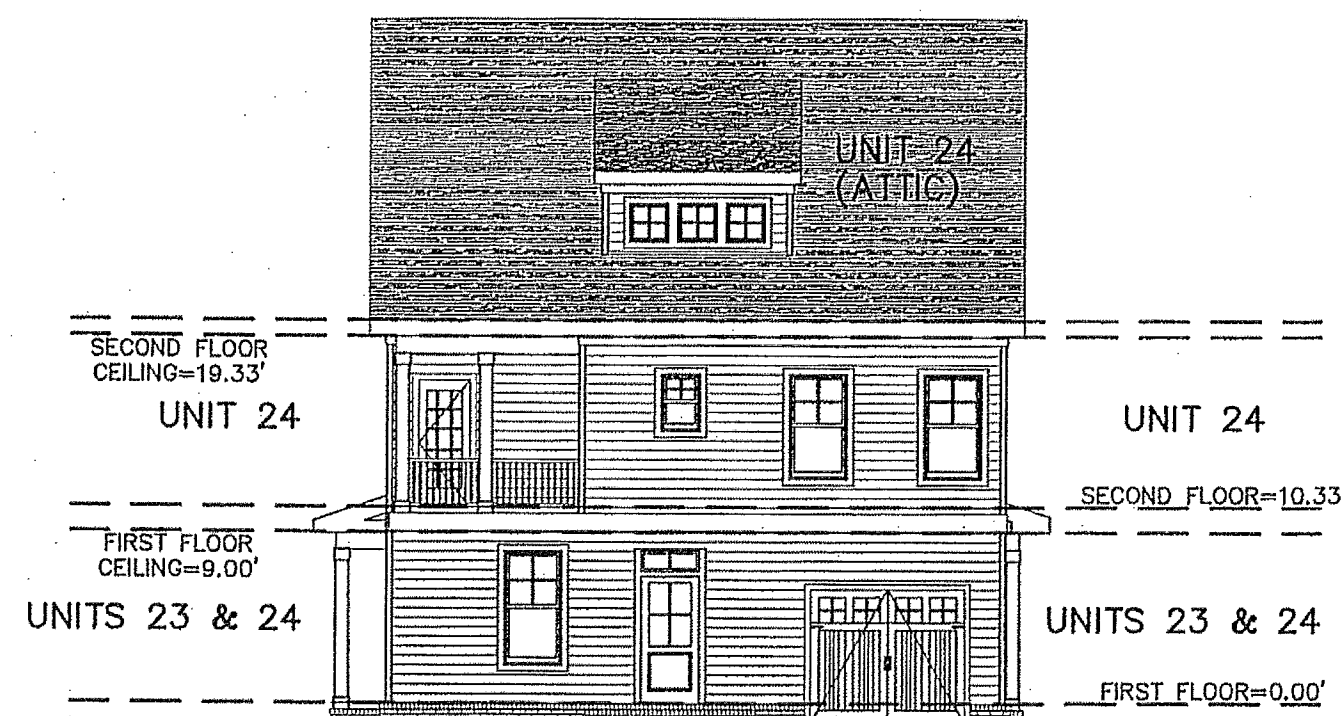
CONDOMINIUM PLAT
OF
PHASE TWELVE
MAINSTAY AT
COMMONWEALTH GREEN
SECTION ONE

BETHEL MAGISTERIAL DISTRICT
COUNTY OF YORK, VIRGINIA
SCALE: 1"=10' DATE: AUGUST 20, 2019
SHEET 5 OF 5

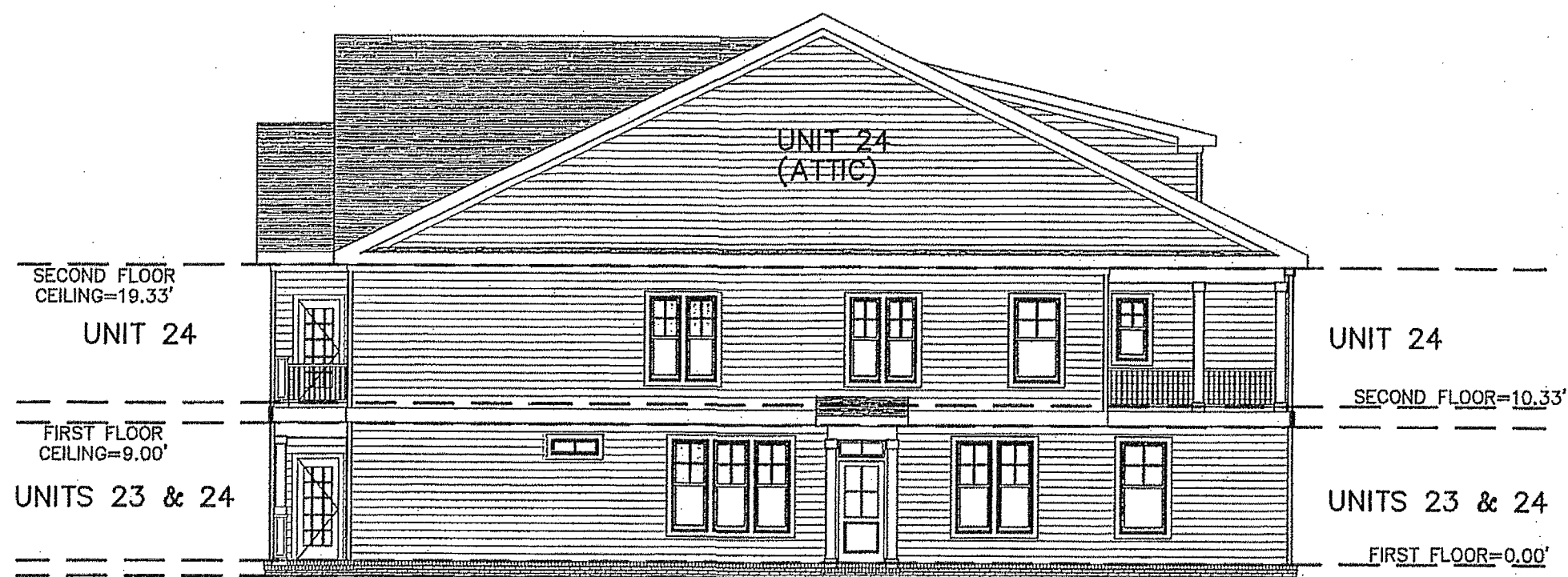
DAVIS & ASSOCIATES, P.C.
LAND SURVEYORS AND PLANNERS
3630 GEORGE WASHINGTON MEMORIAL HIGHWAY
YORKTOWN, VIRGINIA 23693
(757)867-8583



FRONT ELEVATION
(PUBLIC STREET SIDE)



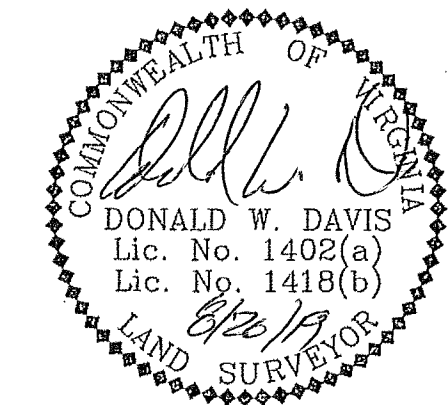
REAR ELEVATION
(PRIVATE LANE SIDE)



RIGHT SIDE ELEVATION



LEFT SIDE ELEVATION



APPROVED
YORK COUNTY BOARD OF SUPERVISORS
BY: *Susan Kassel*
PLAT APPROVING AGENT
DATE: SEPTEMBER 16, 2019

STATE OF VIRGINIA
COUNTY OF YORK
IN THE CLERK'S OFFICE OF THE YORK -
POQUOSON CIRCUIT COURT THIS 17th
DAY OF September 2019, THIS MAP WAS
PRESENTED AND ADMITTED TO RECORD AS
THE LAW DIRECTS AS INSTRUMENT # 190014768

TESTE: KRISTEN N. NELSON, CLERK
CLERK
BY: *Kristen Nelson*