

PLAT OF SUBDIVISION
WHITTAKER'S MILL
SINGLE FAMILY DETACHED HOMES
SECTION 2, PHASE 3

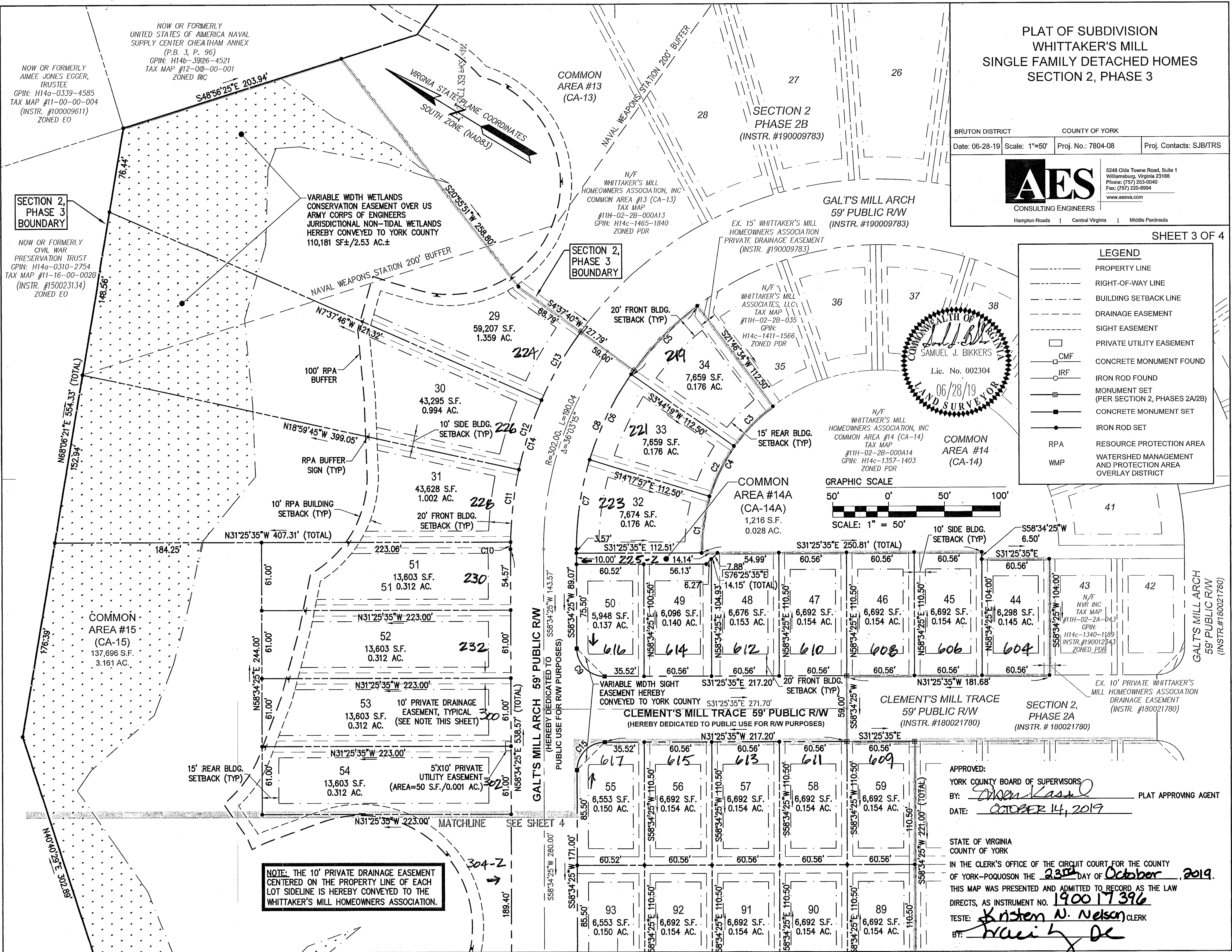
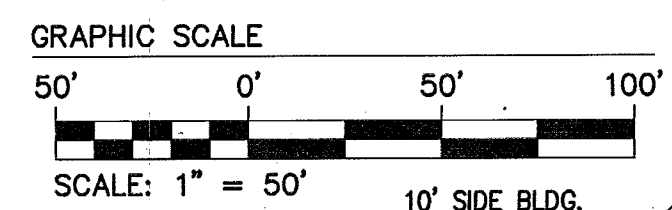
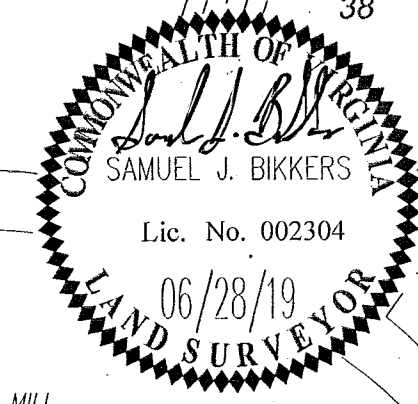
BRUTON DISTRICT COUNTY OF YORK
Date: 08-28-19 Scale: 1"=50' Proj. No.: 7804-08 Proj. Contacts: SJB/TRS

AES
CONSULTING ENGINEERS
5248 Olde Towne Road, Suite 1
Williamsburg, Virginia 23188
Phone: (757) 253-0040
Fax: (757) 220-8994
www.aesva.com
Hampton Roads | Central Virginia | Middle Peninsula

SHEET 3 OF 4

LEGEND

- PROPERTY LINE
- RIGHT-OF-WAY LINE
- BUILDING SETBACK LINE
- DRAINAGE EASEMENT
- SIGHT EASEMENT
- PRIVATE UTILITY EASEMENT
- CMF CONCRETE MONUMENT FOUND
- IRF IRON ROD FOUND
- MONUMENT SET (PER SECTION 2, PHASES 2A/2B)
- CONCRETE MONUMENT SET
- IRON ROD SET
- RPA RESOURCE PROTECTION AREA
- WMP WATERSHED MANAGEMENT AND PROTECTION AREA OVERLAY DISTRICT



NOTE: THE 10' PRIVATE DRAINAGE EASEMENT CENTERED ON THE PROPERTY LINE OF EACH LOT SIDELINE IS HEREBY CONVEYED TO THE WHITTAKER'S MILL HOMEOWNERS ASSOCIATION.

APPROVED:
YORK COUNTY BOARD OF SUPERVISORS
BY: *[Signature]* PLAT APPROVING AGENT
DATE: OCTOBER 14, 2019

STATE OF VIRGINIA
COUNTY OF YORK
IN THE CLERK'S OFFICE OF THE CIRCUIT COURT FOR THE COUNTY OF YORK-POQUOSON THE 23RD DAY OF October, 2019.
THIS MAP WAS PRESENTED AND ADMITTED TO RECORD AS THE LAW DIRECTS, AS INSTRUMENT NO. 190017396
TESTE: *[Signature]* CLERK
BY: *[Signature]*