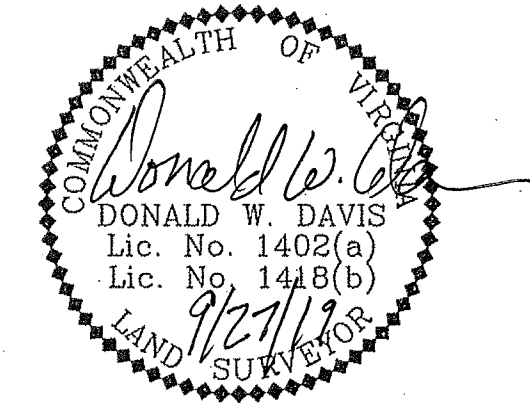


PHASE THIRTEEN - BUILDING FOURTEEN DETAIL

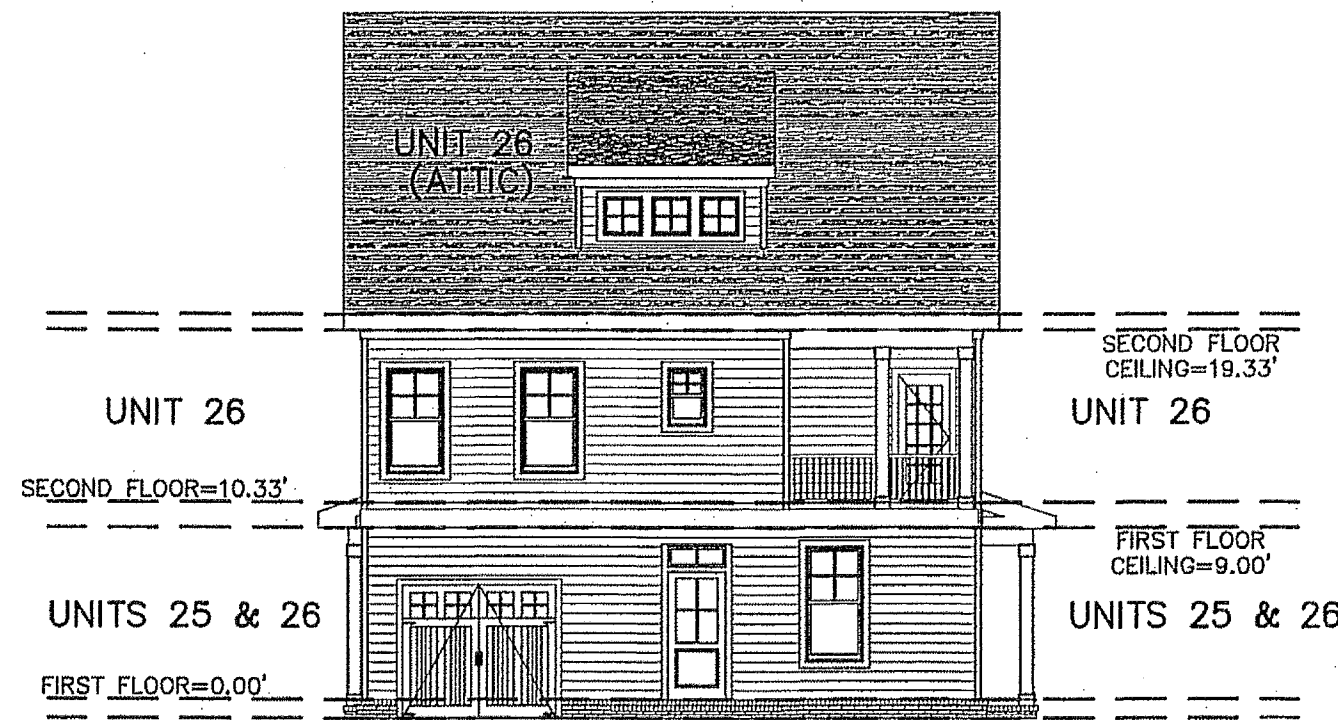
CONDOMINIUM PLAT
OF
PHASE THIRTEEN
MAINSTAY AT
COMMONWEALTH GREEN
SECTION ONE

BETHEL MAGISTERIAL DISTRICT
COUNTY OF YORK, VIRGINIA
SCALE: 1"=10' DATE: SEPTEMBER 27, 2019
SHEET 5 OF 5

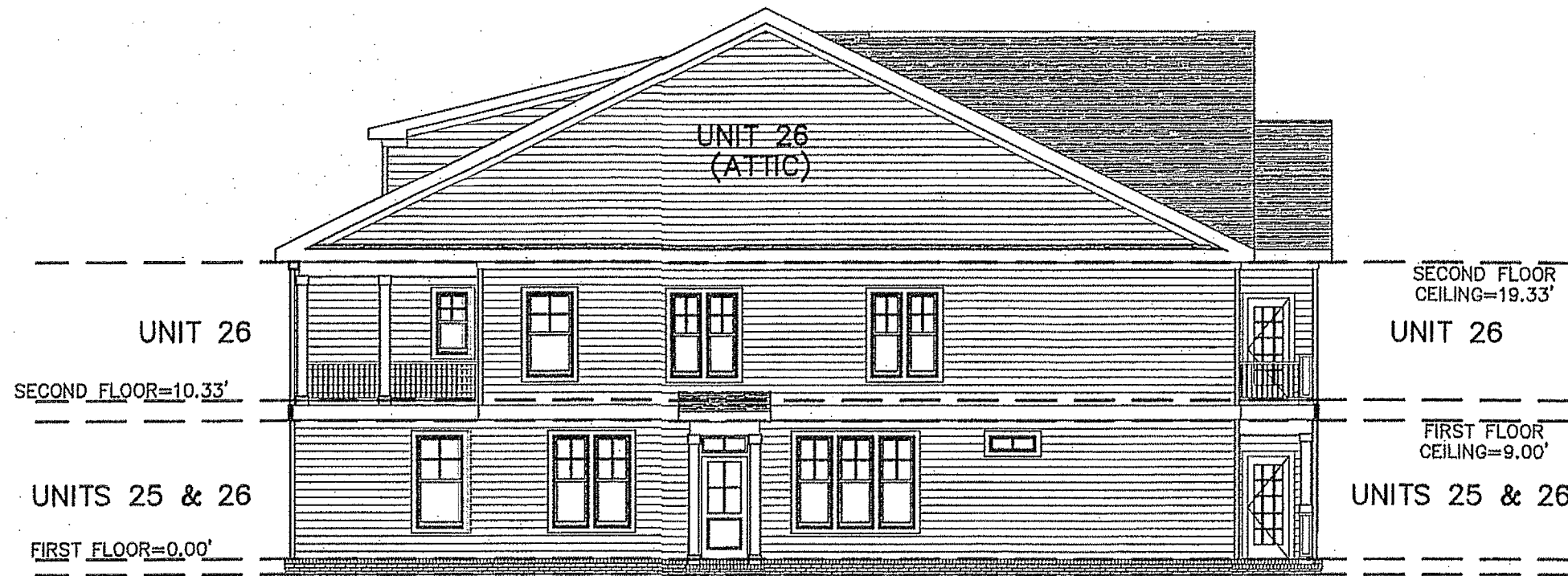
DAVIS & ASSOCIATES, P.C.
LAND SURVEYORS AND PLANNERS
3630 GEORGE WASHINGTON MEMORIAL HIGHWAY
YORKTOWN, VIRGINIA 23693
(757)867-8583



FRONT ELEVATION
(PUBLIC STREET SIDE)



REAR ELEVATION
(PRIVATE LANE SIDE)



LEFT SIDE ELEVATION



RIGHT SIDE ELEVATION

APPROVED
YORK COUNTY BOARD OF SUPERVISORS
BY: Erin Kassel
PLAT APPROVING AGENT
DATE: OCTOBER 30, 2019

STATE OF VIRGINIA
COUNTY OF YORK
IN THE CLERK'S OFFICE OF THE YORK -
POQUOSON CIRCUIT COURT THIS 30th
DAY OF October 2019, THIS MAP WAS
PRESENTED AND ADMITTED TO RECORD AS
THE LAW DIRECTS AS INSTRUMENT # 190017733

TESTE: Kristen N. Nelson
CLERK
BY: Christine Wacker-Cleary, P.C.