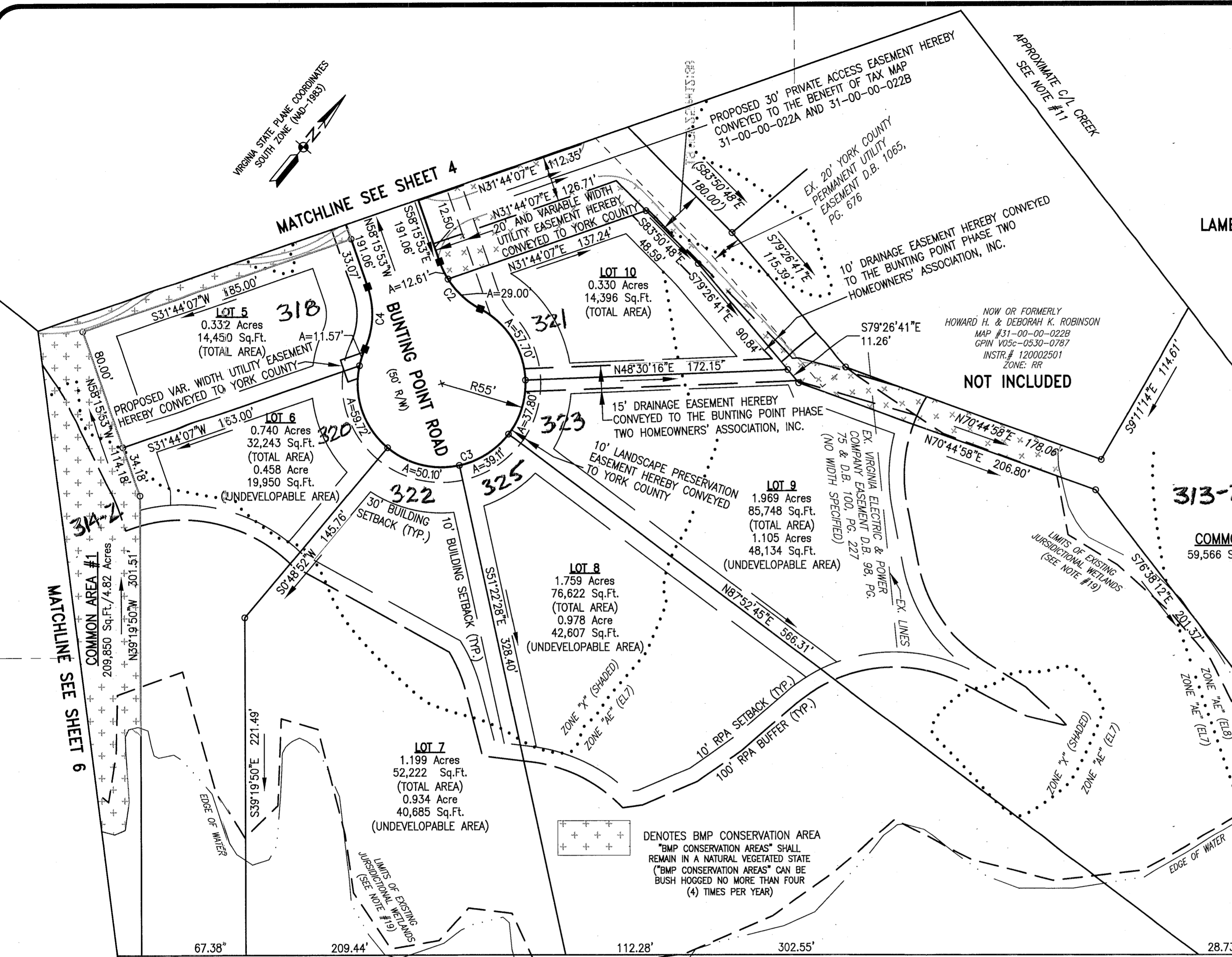
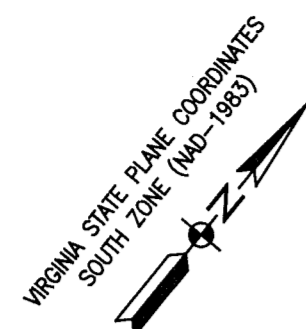


CURVE DATA					
CURVE #	RADIUS	LENGTH	DELTA	TANGENT	CHORD
C2	55.00'	41.61'	43°20'30"	21.85'	S79°56'08"E 40.62'
C3	55.00'	256.00'	266°41'01"	58.28'	S31°44'07"W 80.00'
C4	55.00'	41.61'	43°20'30"	21.85'	N36°35'38"W 40.62'



APPROVED
 YORK COUNTY BOARD OF SUPERVISORS
 BY: *Sharon Kaul*
 PLAT APPROVING AGENT
 DATE: NOVEMBER 25, 2019

STATE OF VIRGINIA
 COUNTY OF YORK
 IN THE CLERK'S OFFICE OF THE CIRCUIT COURT FOR THE COUNTY OF
 YORK-POQUOSON, ON THIS 25th DAY OF November 2019
 THIS MAP WAS PRESENTED AND ADMITTED TO RECORD AS THE LAW
 DIRECTS, AS INSTRUMENT
 NUMBER 190019605
 TESTE: Kristen N. Nelson
 CLERK
 BY: *Brian J. Layne*

- LEGEND**
- IRON PIN FOUND (UNLESS OTHERWISE NOTED)
 - #5 IRON REBAR SET (UNLESS OTHERWISE NOTED)
 - #5 IRON REBAR SET IN CONCRETE



**SUBDIVISION PLAT OF
 BUNTING POINT PHASE 2**
 BETHEL DISTRICT, YORK COUNTY, VIRGINIA

DRAWN: DHW	DATE: 4/1/19	REVISION:
COMP: BJL	SCALE: 1"=50'	
CHECKED: BJL		

**PARRISH
 LAYNE**
 DESIGN GROUP
 Engineers • Surveyors • Planners
 P.O. Box 9164, Chesapeake, VA 23321
 Phone: 757.686.3345 Fax: 757.686.3348

REF:	SHEET NO. 5
INST# 170014092	SHEET: 5 of 6

G:\184\0-17 BUNTING POINT SUB PLATTING SURVEY\184-SUB PLATTING