

# PLAT OF SUBDIVISION ARBORDALE, PHASE IIC

BRUTON DISTRICT  
YORK COUNTY, VIRGINIA

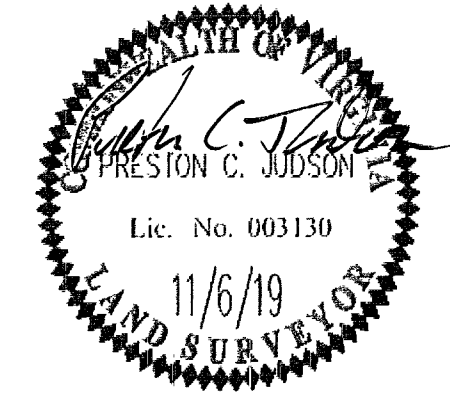
BRUTON DISTRICT YORK COUNTY VIRGINIA

Date: 7/24/19 Scale: 1"=150' Proj. No.: W10466-00 Proj. Contacts: JAG/PCJ



2248 Old Towne Road, Suite 1  
Williamsburg, Virginia 23188  
Phone: (767) 253-0040  
Fax: (767) 220-9944  
www.aesva.com

SHEET 3 OF 6

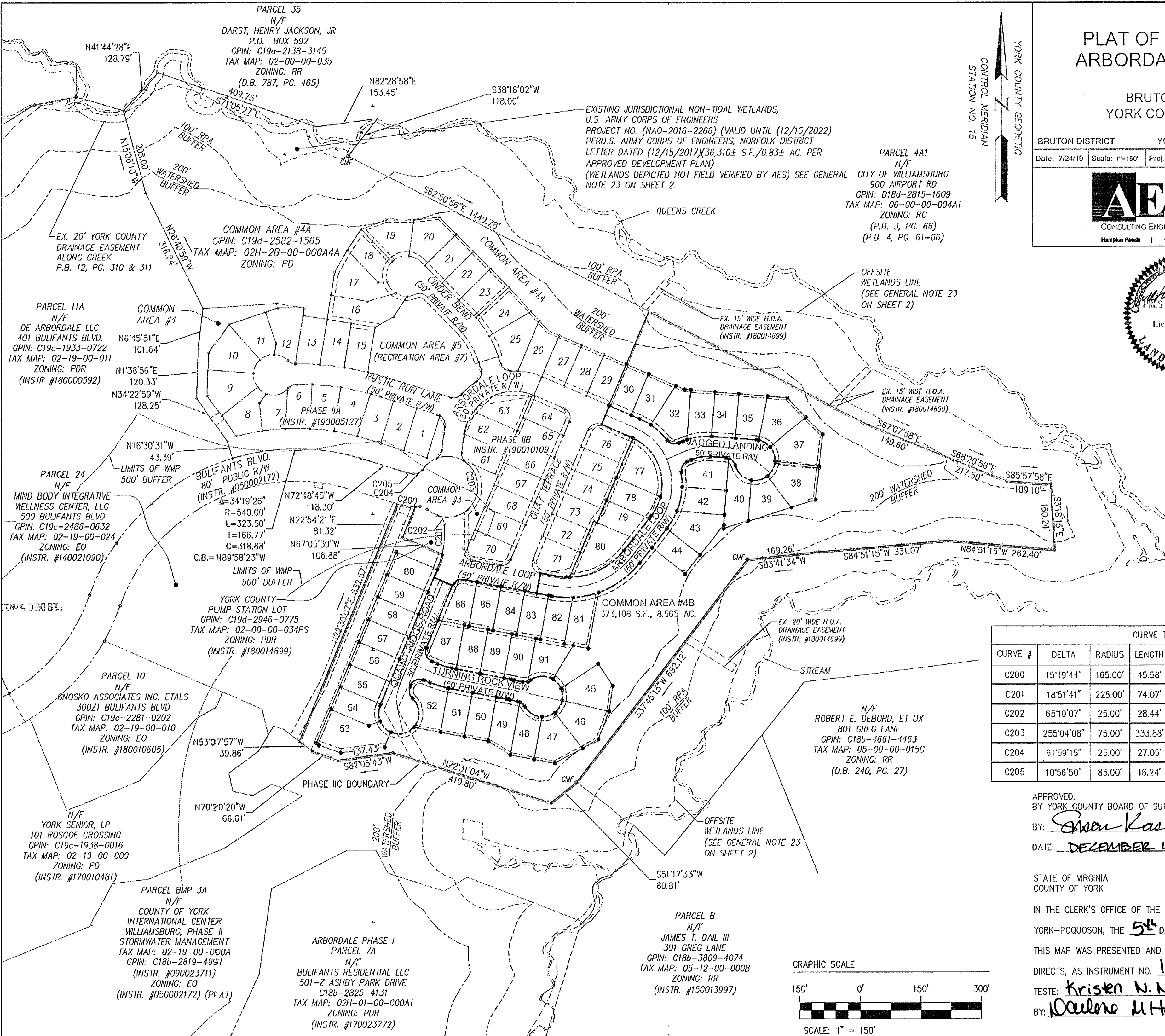


YORK COUNTY GEODETIC  
CONTROL MERIDIAN  
STATION NO. 15

EXISTING JURISDICTIONAL NON-TIDAL WETLANDS,  
U.S. ARMY CORPS OF ENGINEERS  
PROJECT NO. (NAO-2016-2266) (VALID UNTIL (12/15/2022))  
PER U.S. ARMY CORPS OF ENGINEERS, NORFOLK DISTRICT  
LETTER DATED (12/15/2017) (36,310± S.F./0.83± AC. PER  
APPROVED DEVELOPMENT PLAN)  
(WETLANDS DEPICTED NOT FIELD VERIFIED BY AES) SEE GENERAL  
NOTE 23 ON SHEET 2.

PARCEL 4A1  
N/F  
CITY OF WILLIAMSBURG  
900 AIRPORT RD  
GPIN: D18d-2815-1609  
TAX MAP: 06-00-00-004A1  
ZONING: RC  
(P.B. 3, PG. 66)  
(P.B. 4, PG. 61-66)

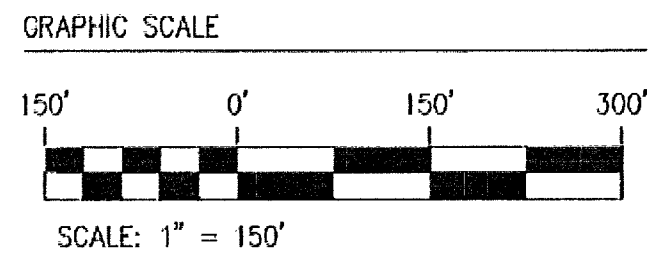
PARCEL 4A1  
N/F  
CITY OF WILLIAMSBURG  
900 AIRPORT RD  
GPIN: D18d-2815-1609  
TAX MAP: 06-00-00-004A1  
ZONING: RC  
(P.B. 3, PG. 66)  
(P.B. 4, PG. 61-66)



CURVE TABLE						
CURVE #	DELTA	RADIUS	LENGTH	TANGENT	CHORD	CHORD BEARING
C200	15°49'44"	165.00'	45.58'	22.94'	45.44'	S80°43'37"E
C201	18°51'41"	225.00'	74.07'	37.37'	73.73'	N3°55'16"E
C202	65°10'07"	25.00'	28.44'	15.98'	26.93'	N38°05'38"W
C203	255°04'08"	75.00'	333.88'	—	118.95'	N18°12'46"W
C204	61°59'15"	25.00'	27.05'	15.02'	25.75'	S65°14'48"W
C205	10°56'50"	85.00'	16.24'	8.14'	16.22'	N78°17'10"W

APPROVED:  
BY YORK COUNTY BOARD OF SUPERVISORS  
BY: *Shawn Kassar* PLAT APPROVING AGENT  
DATE: DECEMBER 4, 2019

STATE OF VIRGINIA  
COUNTY OF YORK  
IN THE CLERK'S OFFICE OF THE CIRCUIT COURT FOR THE COUNTY OF  
YORK-POQUOSON, THE 5<sup>th</sup> DAY OF December, 2019  
THIS MAP WAS PRESENTED AND ADMITTED TO RECORD AS THE LAW  
DIRECTS, AS INSTRUMENT NO. 190020193  
TESTE: *Kristen N. Nelson* CLERK  
BY: *Deanne M. Holt, Jr*



S:\085-19-0000-Bulifants Arbordale\Map\190020193.dwg, 12/03/19 2:35:52 PM, D:\dwg