

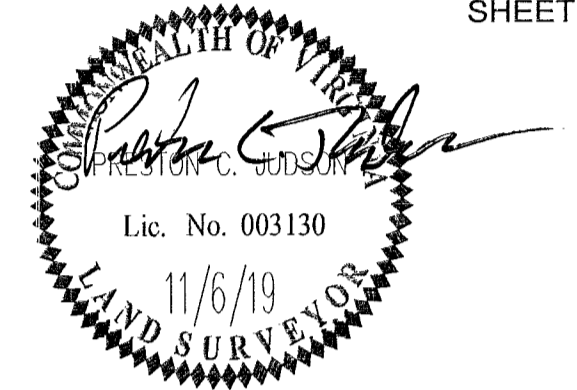
**PLAT OF SUBDIVISION
ARBORDALE, PHASE IIC**

BRUTON DISTRICT
YORK COUNTY, VIRGINIA

BRUTON DISTRICT YORK COUNTY VIRGINIA
Date: 7/24/19 Scale: 1"=50' Proj. No.: W10466-00 Proj. Contacts: JAG/PCJ

AES
CONSULTING ENGINEERS
8248 Cicle Towne Road, Suite 1
Williamsburg, Virginia 23198
Phone: (757) 253-0040
Fax: (757) 220-8994
www.aesv.com

SHEET 5 OF 6

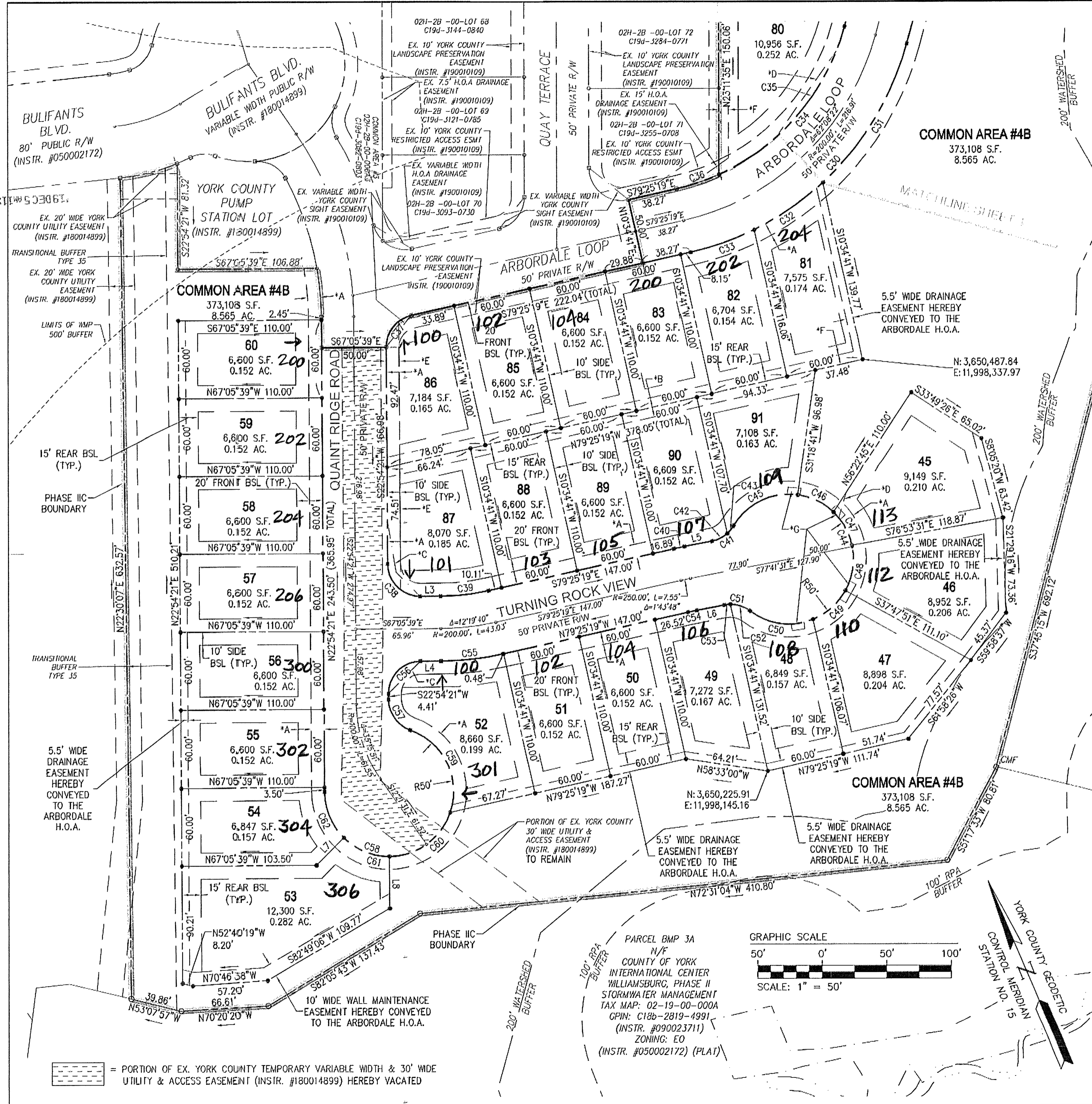


EASEMENT LEGEND

- *A - 10' LANDSCAPE PRESERVATION EASEMENT HEREBY CONVEYED TO YORK COUNTY
- *B - 15' WIDE DRAINAGE EASEMENT HEREBY CONVEYED TO THE ARBORDALE HOMEOWNER'S ASSOCIATION
- *C - VARIABLE WIDTH SIGHT EASEMENT HEREBY CONVEYED TO YORK COUNTY
- *D - VARIABLE WIDTH DRAINAGE EASEMENT HEREBY CONVEYED TO THE ARBORDALE HOMEOWNER'S ASSOCIATION
- *E - 10' RESTRICTED ACCESS EASEMENT HEREBY CONVEYED TO YORK COUNTY
- *F - 7.5' WIDE DRAINAGE EASEMENT HEREBY CONVEYED TO THE ARBORDALE HOMEOWNER'S ASSOCIATION
- *G - PROPOSED 5'x10' NEWPORT NEWS WATERWORKS UTILITY EASEMENT TO BE RECORD UNDER SEPARATE PLAT

NOTES:
1. SEE SHEET 6 FOR EASEMENT DETAILS. SEE SHEET 2 FOR LINE AND CURVE TABLES, GENERAL NOTES AND LEGEND.

APPROVED:
BY YORK COUNTY BOARD OF SUPERVISORS
BY: Dwan Kassel PLAT APPROVING AGENT
DATE: DECEMBER 4, 2019
STATE OF VIRGINIA
COUNTY OF YORK
IN THE CLERK'S OFFICE OF THE CIRCUIT COURT FOR THE COUNTY OF YORK-POQUOSON, THE 5th DAY OF December, 2019
THIS MAP WAS PRESENTED AND ADMITTED TO RECORD AS THE LAW DIRECTS, AS INSTRUMENT NO. 190020193
TESTE: Kristen N. Nelson CLERK
BY: Caroline Hottel, ac



= PORTION OF EX. YORK COUNTY TEMPORARY VARIABLE WIDTH & 30' WIDE UTILITY & ACCESS EASEMENT (INSTR. #180014899) HEREBY VACATED

PARCEL BMP 3A
N/F
COUNTY OF YORK
INTERNATIONAL CENTER
WILLIAMSBURG, PHASE II
STORMWATER MANAGEMENT
TAX MAP: 02-19-00-000A
GPIN: C18b-2819-4991
(INSTR. #090023711)
ZONING: EO
(INSTR. #050002172) (PLAT)

