

# PLAT OF SUBDIVISION ARBORDALE, PHASE IIC

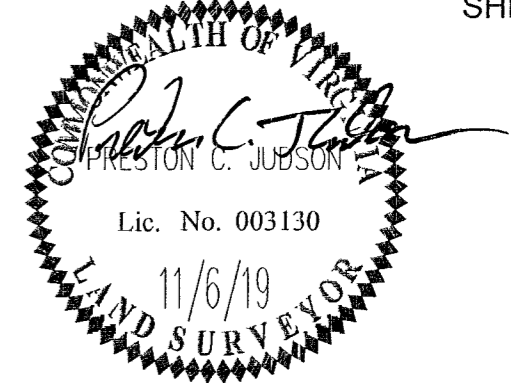
BRUTON DISTRICT  
YORK COUNTY, VIRGINIA

BRUTON DISTRICT YORK COUNTY VIRGINIA

Date: 7/24/19 Scale: 1"=50' Proj. No.: W10466-00 Proj. Contacts: JAG/PCJ

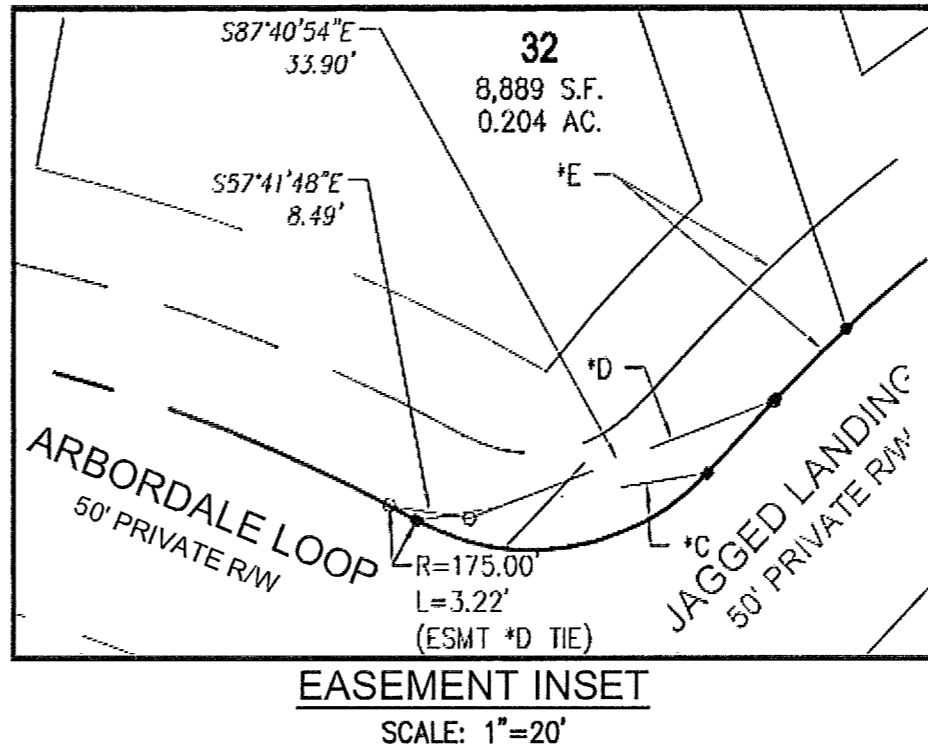
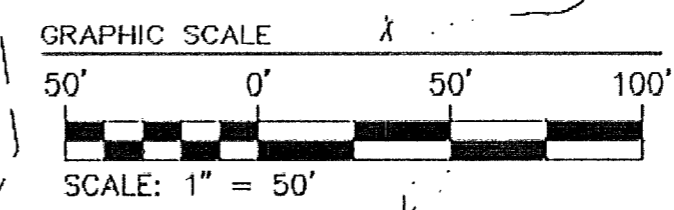
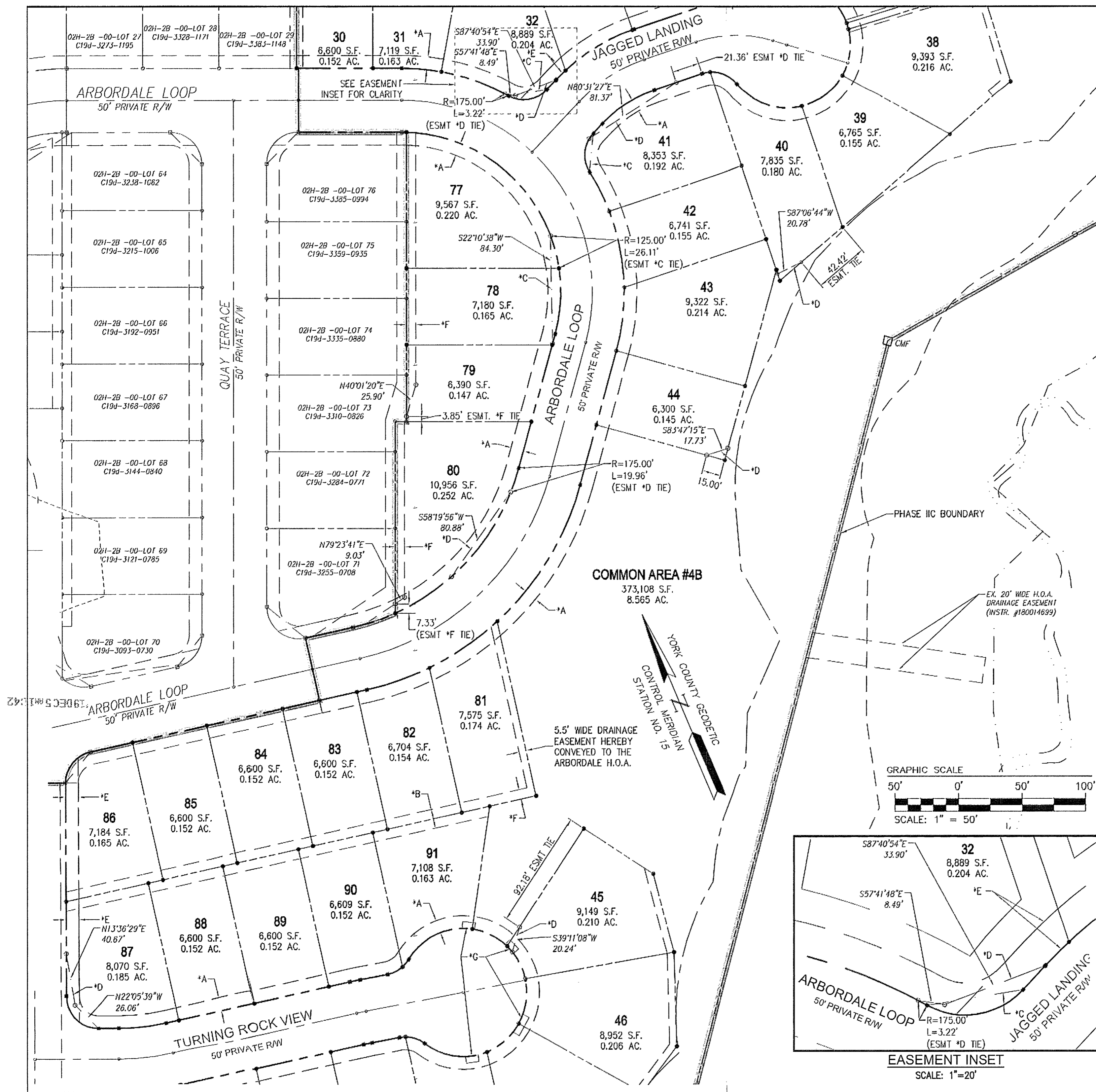
**AES**  
CONSULTING ENGINEERS  
Hampton Roads | Central Virginia | Middle Peninsula  
5248 Clide Towne Road, Suite 1  
Williamsburg, Virginia 23188  
Phone: (757) 265-0040  
Fax: (757) 220-8894  
www.aesvi.com

SHEET 6 OF 6



- EASEMENT LEGEND**
- \*A - 10' LANDSCAPE PRESERVATION EASEMENT HEREBY CONVEYED TO YORK COUNTY
  - \*B - 15' WIDE DRAINAGE EASEMENT HEREBY CONVEYED TO THE ARBORDALE HOMEOWNER'S ASSOCIATION
  - \*C - VARIABLE WIDTH SIGHT EASEMENT HEREBY CONVEYED TO YORK COUNTY
  - \*D - VARIABLE WIDTH DRAINAGE EASEMENT HEREBY CONVEYED TO THE ARBORDALE HOMEOWNER'S ASSOCIATION
  - \*E - 10' RESTRICTED ACCESS EASEMENT HEREBY CONVEYED TO YORK COUNTY
  - \*F - 7.5' WIDE DRAINAGE EASEMENT HEREBY CONVEYED TO THE ARBORDALE HOMEOWNER'S ASSOCIATION
  - \*G - PROPOSED 5'x10' NEWPORT NEWS WATERWORKS UTILITY EASEMENT TO BE RECORDED UNDER SEPARATE PLAT

**NOTES:**  
1. SEE SHEET 2 FOR LINE AND CURVE TABLES, GENERAL NOTES AND LEGEND.



APPROVED:  
BY YORK COUNTY BOARD OF SUPERVISORS  
BY: *Sharon Kasal* PLAT APPROVING AGENT  
DATE: DECEMBER 4, 2019  
STATE OF VIRGINIA  
COUNTY OF YORK  
IN THE CLERK'S OFFICE OF THE CIRCUIT COURT FOR THE COUNTY OF YORK-POQUOSON, THE 5<sup>th</sup> DAY OF December, 2019.  
THIS MAP WAS PRESENTED AND ADMITTED TO RECORD AS THE LAW DIRECTS, AS INSTRUMENT NO. 190020193  
TESTE: *Kristen N. Nelson* CLERK  
BY: *Deborah M. Holt, Jr.*

S:\055\14\046600\ARBORDALE\ARBORDALE\_Plat\190466-00\_Plat\190466-00\_Plat.dwg, 11/20/19, 14:01:00, DWG, D:\055\14\046600\ARBORDALE\ARBORDALE\_Plat\190466-00\_Plat\190466-00\_Plat.dwg