

APPROVED:
YORK COUNTY BOARD OF SUPERVISORS

BY: Susan Kassel DATE: DECEMBER 11, 2019
PLAT APPROVING AGENT

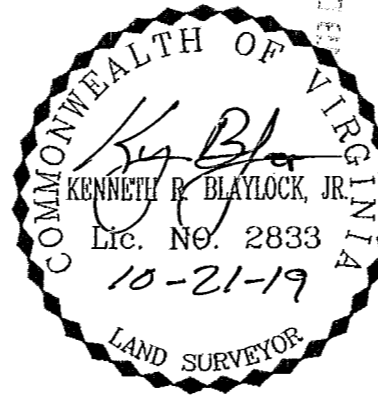
COMMONWEALTH OF VIRGINIA
COUNTY OF YORK
IN THE CLERK'S OFFICE OF THE CIRCUIT COURT FOR
THE COUNTY OF YORK—POQUOSON, VIRGINIA
THE 12th DAY OF December, 2019
THIS PLAT WAS PRESENTED AND ADMITTED TO
RECORD AS THE LAW DIRECTS
AS INSTRUMENT NO. 190020702

TESTE: Kristen N. Nelson
CLERK

BY: Christina Lumber Company

R/W DEDICATION CURVE TABLE						
CURVE	LENGTH	RADIUS	DELTA	TANGENT	CHORD BEARING	CHORD
C1	21.99	14.00	90°00'00"	14.00	N47°29'22"E	19.80

R/W DEDICATION LINE TABLE		
LINE	BEARING	LENGTH
L1	N87°30'38"W	121.42
L2	S87°30'38"E	107.36
L3	S02°15'09"W	14.00



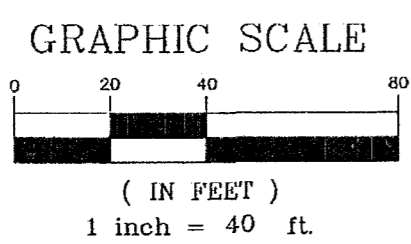
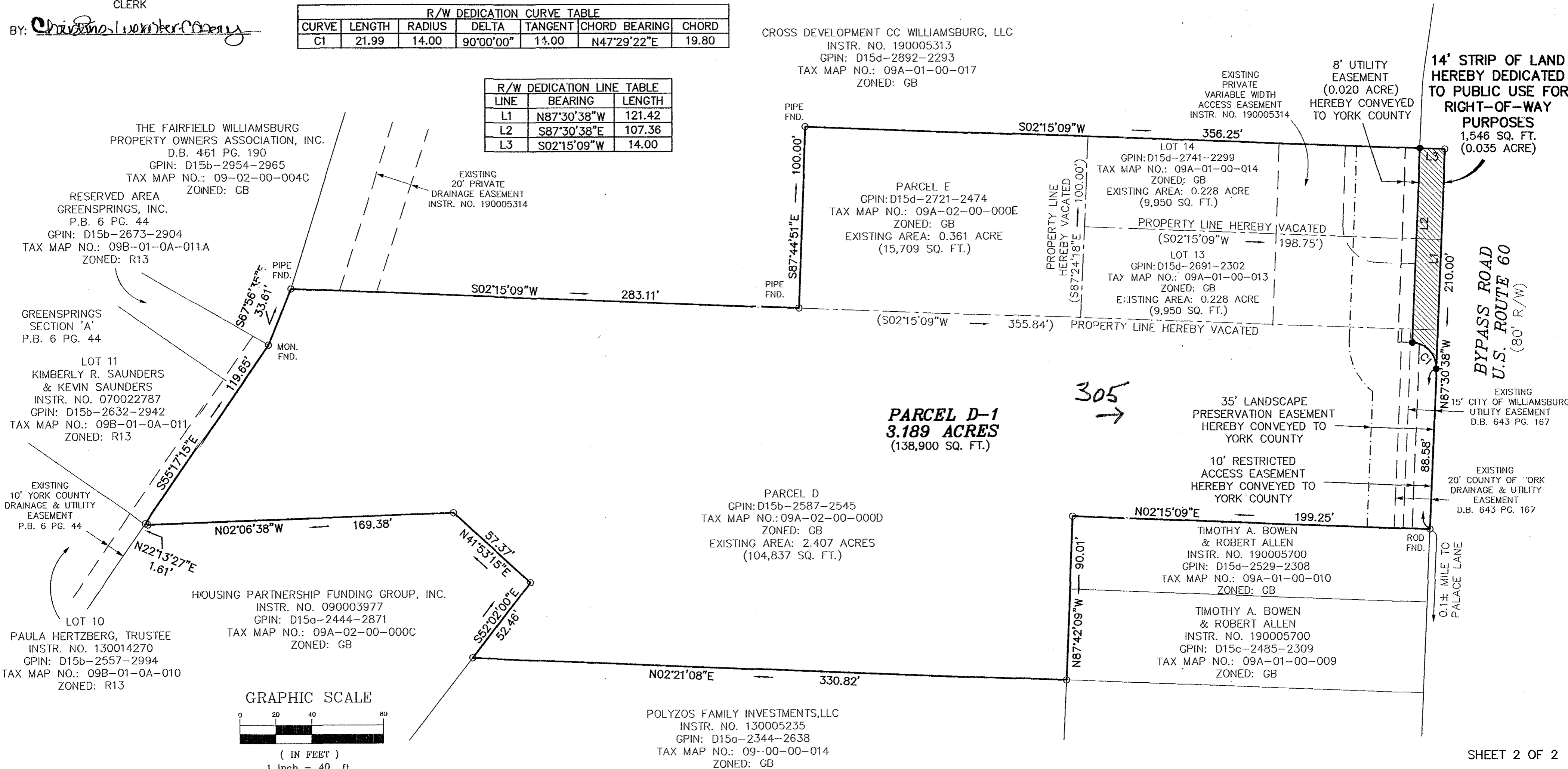
- INDICATES A ROD FOUND UNLESS OTHERWISE NOTED
- INDICATES A ROD SET

**PLAT OF PROPERTY LINE VACATIONS,
RIGHT-OF-WAY DEDICATION, AND EASEMENT
DEDICATION ON THE PROPERTIES OWNED BY
SXCW PROPERTIES II, LLC**

BRUTON DISTRICT * YORK COUNTY, VA

DATE: OCTOBER 21, 2019 SCALE: 1" = 40'

JENNINGSTEPHENSON P.C.
LAND SURVEYORS & PLANNERS
10160 STAPLES MILL ROAD SUITE 103
GLEN ALLEN, VA 23060
PHONE - 804-545-6235
FAX - 804-545-6259
J.N. 17-573



POLYZOS FAMILY INVESTMENTS, LLC
INSTR. NO. 130005235
GPIN: D15a-2344-2638
TAX MAP NO.: 09-00-00-014
ZONED: GB